



## Growth | 2022 Annual Report

Growth is the progression of becoming more complete, of expanding and becoming more relevant. Growth is essential to survival, and it requires adaptability and perseverance. Yet it also requires careful nurturing and mindful guidance.

By all definitions, 2022 was a year of growth for The Chicago Lighthouse. It came in the form of new programs and services, expanded operations, and through mindful care that secured our future and ensured The Lighthouse would thrive for generations to come. As a word, “growth” takes its meaning from the Old English term for “flourish,” which is precisely what The Chicago Lighthouse continues to do.

## Dear Friends



In September 2022, The Chicago Lighthouse held a ribbon cutting for a small learning garden. In partnership with Urban Transformation Network, a small space on our building's southwest side is now a place where students in our school, participants in our Adult Living Skills program and Veteran clients can grow food and flowers and connect with the earth.

Admittedly, the learning garden was not our largest project of the year, but it is emblematic of our year and our theme for our 2022 Annual Report: Growth. Like our learning garden, The Chicago Lighthouse creates opportunities to take small ideas, guide their development and help them flourish.

To us, however, growth does not just mean “getting bigger.” It refers to extending our roots by building a 76-unit residential building that will establish The Lighthouse as a haven for people with disabilities, Veterans and those with low incomes. It means extending branches of support to other organizations to meet evolving community needs and providing new, knowledge-based job opportunities for our clients. It includes completing a successful endowment campaign, ensuring we will thrive for generations to come.

Yes, by every measure, 2022 was a year of tremendous growth for The Chicago Lighthouse. We are extremely proud of our accomplishments this year, and we are even more excited about how this year's work will help us continue to grow.

Thank you for your support,

**Robert W. Clarke**

Chair, Board of Directors

**Janet P. Szlyk, Ph.D.**

President and Chief Executive Officer



**EDITORIAL CONCEPT:** Janet P. Szlyk, Ph.D.

**WRITERS:** Aaron Baar, Isabella Chojnacki, Kalari Girtley-Jackson, Sandy Murillo, Emeline Pell

**CONTRIBUTORS:** Mark Leon, David DeBoer, Lindsay Inglis, Karoline Kijowski, Lora Nickels

**EDITORIAL BOARD:** Aaron Baar, Angela D'Antonio, Maureen Haller, Lora Nickels, Melissa Wittenberg

**DESIGN:** Lisa Birmingham

**ILLUSTRATION:** Lisa Birmingham and Dylan Zimmerman

**PHOTOGRAPHY:** Adamaris Ayala, Lisa Birmingham, Michael Carrs, Jessica Grant, Vincent Johnson, Matt Kosterman, John Reilly, Mila Samokhina, Robert Sitt, Dylan Zimmerman

**For large print or Braille versions of the Annual Report, call:**  
(312) 666-1331 ext. 3358, or email: [publications@chicagolighthouse.org](mailto:publications@chicagolighthouse.org)

## Table of Contents

Growth   2022 Annual Report .....	1
Dear Friends .....	2
Rick Forsythe: A Legacy that Will Live Forever .....	5
Deepening Our Roots for “A New Area of Accessibility” .....	7
Expanding in the Northern Suburbs.....	8
New Branches of Partnership .....	9
Celebrating Inclusion.....	9
Branching into New Fields .....	9
Nurturing Independence.....	9
Finding Support and Growth as a Family .....	10
From Small Things, Big Things Will Grow.....	11
ICVP Study Group.....	12
Extending Community Connections Through Social Enterprise .....	13
Creativity in Bloom in Photography for All Program.....	14
Celebrating Envision The Future Campaign Success.....	15
Planned Giving .....	15
Lifetime Donors.....	16
The Corwith Hamill Society .....	18
Lighthouse Keepers.....	25
In-Kind Kindness.....	29
The Chicago Lighthouse Board of Directors.....	31
Chicago Lighthouse Industries Board of Directors.....	32
Auxiliary Boards .....	33
ASSOCIATE BOARD .....	33
JUNIOR BOARD.....	33
LIONS STRICKFADEN.....	33
ADVISORY COMMITTEE.....	33
PRESIDENT’S ADVISORY COUNCIL.....	33
Board of Directors Members Emeriti .....	34
In Memoriam .....	35
2021 - 2022 Consolidated Financial Summary and Comparison .....	36
Statements of Financial Position.....	36
Statements of Activities .....	37
The Chicago Socialight .....	38
Providing Pathways to Independence .....	40

## Rick Forsythe: A Legacy that Will Live Forever



*Rick and Sandy have probably done more to advance the diagnosis and treatment of low vision than any other single person or family in the country.*

*—Janet Szlyk, Ph.D. | President & CEO*

**In December 2022, Rick Forsythe—a tireless supporter of low vision research and treatment at The Chicago Lighthouse and for many other organizations around the country—passed away, making all of our lights just a little dimmer.**

Rick and his beloved wife Sandy (who is a member of our Board) have been a part of The Lighthouse family for over 20 years. They have supported and nurtured our work, and always encouraged us to do better and do more. Equally important, they also made the financial investments necessary to fulfill our potential and secure our future success. “We will always be forever grateful to them for their tireless support and commitment to making the world better for those with vision impairments,” says Lighthouse President and CEO Janet Szlyk, Ph.D.



Rick was a successful and compassionate businessman and philanthropist, and we are proud to have his name attached to several of our programs, including the Forsythe Center for Comprehensive Vision Care and the Forsythe Entrepreneurial Center in Chicago, as well as the Sandy Forsythe Center for Assistive Technology in our Glenview location.



We are honored to continue Rick Forsythe's legacy through these programs, as well as through our building at 1850 Roosevelt Road, which has been named The Forsythe Pavilion in recognition of his and Sandy's ongoing commitment to our programs and services. Thanks to Rick, the Forsythe name will always serve as a reminder of how we can—and should—push ourselves to do more and do better for everyone in our community. He is forever in our hearts.



# Deepening Our Roots for “A New Area of Accessibility”



In 1955, The Chicago Lighthouse put down roots in the Illinois Medical District, establishing a permanent location where Chicagoans who are blind or visually impaired receive vision care, employment training, and learn skills that are vital for independent living.

Over the ensuing 38 years, that building has expanded into a 100,000-square-foot space that houses those original programs (including the country’s oldest continually operating Low Vision Clinic), as well as our clock factory, twelve social enterprise contact centers and a school.

In the biggest undertaking in our history, The Chicago Lighthouse strengthened its ties to our location, breaking ground on “The Foglia Residences at The Chicago Lighthouse.” When it opens in Spring 2024, the building will offer 76 income-qualifying residential units, outfitted with accessible features for people who are blind or visually impaired. Leasing emphasis will be given to people with disabilities and Veterans.



**Nearly 25% of those who are homeless are disabled.<sup>1</sup>** Like so many of The Lighthouse’s programs, The Foglia Residences will fill an urgent need in our community. Nearly one-quarter of individuals who experience homelessness are people with disabilities and just over 9% are Veterans.

---

<sup>1</sup> \*Source: National Association of County and City Health Officials, 2019





The Foglia Residences were developed in partnership with David Brint, a former Lighthouse board member and Founder and Principal at Brinshore Development. For David, the project is personal. His son Alan is blind, making David acutely aware of the need for safe, affordable, accessible housing for the visually impaired population. As with any project representing growth, David hopes The Foglia Residences plant the seeds for similar developments in other areas.

Before starting his own healthcare products company, Vincent Foglia (pictured here with his wife, Patricia) began his career selling medical products in the Illinois Medical District. In remarks at the summer groundbreaking event, Mr. Foglia expressed his pride in helping to bring safe, affordable, accessible housing to the area.

## Expanding in the Northern Suburbs



**In May 2022, The Chicago Lighthouse renamed our north-suburban Glenview location in honor of Board member, business leader and donor David Huber and his wife, Nancy. What was once Chicago Lighthouse North is now “The Chicago Lighthouse Huber Vision Rehabilitation Center.”**

The Hubers are longtime supporters of The Chicago Lighthouse and our Lighthouse North location. David has been a member of our board since 2008. His business, Huber Financial Advisors, LLC, was the presenting sponsor of our “Lighthouses on the Mag Mile” public art display in 2018.

“David and Nancy’s commitment to our organization will help countless individuals in the north and northwest suburbs in need of our low vision expertise,” said Lighthouse President and CEO Janet Szlyk, Ph.D., as she unveiled the new name.

Though the name has changed, the services remain. In fact, the site has expanded its programs, including increased comprehensive optometric care, additional psychological counseling availability and increased assistive technology assistance.



# New Branches of Partnership



## Celebrating Inclusion

In October 2022, The Chicago Lighthouse, in partnership with **The Chicago Central Lions Club** and **The Illinois Medical District**, kicked off the inaugural “Rise to Shine Run and Walk.” The event, which included 10K, 5K and 1-mile course options, celebrated health, wellness and community throughout the Illinois Medical District and was fully accessible for people with all types of disabilities. More than 200 individuals participated in the event, which we hope to turn into an annual happening to showcase the vibrancy of our local community and the power of inclusion.



## Branching into New Fields

Shaina, who is visually impaired, was one of the first participants to complete the Certified Medical Administrative Assistant training program, presented in partnership with Moraine Valley Community College. The self-directed program helps people with disabilities prepare for the National Certification Exam to become medical administrative assistants. This program is part of The Lighthouse’s commitment to developing more knowledge-based job opportunities.



## Nurturing Independence

Gardening encourages physical activity, reduces stress, helps develop social and motor skills, and nurtures independence. In September 2022, The Lighthouse, in partnership with Urban Transformation Network’s Metropolitan Farms, unveiled a new learning garden where students from the Children’s Development Center, participants in our Adult

Living Skills Program and Veteran clients tend to fresh vegetables and flowers. “I am excited about this partnership and how far we can expand into the future,” said Urban Transformation Network CEO Donald Peterson.

## Finding Support and Growth as a Family



Just as gardens need nourishment and support to grow strong, The Chicago Lighthouse provides its community with opportunities that will help everyone blossom. For the Hernandez family, Juan and Elizabeth, who are both legally blind, and their daughter Karen, The Lighthouse has been the trellis that has supported their family's growth and strength.

The Hernandez Family has been part of The Lighthouse community since 2014, when Elizabeth began work in our University of Illinois Health System contact center. The job provided Elizabeth an opportunity to reap all the benefits of employment (including a steady paycheck, benefits and social

connections). It also offered a preschool where her daughter, Karen (then a 4-year-old) could learn kindergarten-readiness skills. Elizabeth and Karen came to The Lighthouse together, where both found a place to help them flourish.

Meanwhile, Juan was searching for opportunities of his own. College-educated, Juan faced the same barriers to employment that are all too familiar for those who are blind or visually impaired. He might get a first interview, but he rarely got a second and never got the job. An accomplished musician, Juan took to busking in the streets and subway stations to help his family. The gig had its challenges—his guitar was stolen more than once—but it offered freedom to be an attentive parent for his daughter.

When the COVID-19 outbreak shut down the subways, Juan once again found himself looking for opportunities. With Elizabeth working remotely, Juan saw his chance and began working for The Chicago Lighthouse as a contact center agent.

As a result of the care and guidance they have received from The Lighthouse, the Hernandez family has thrived. Karen is blossoming as a sixth-grader, and the steady support Juan and Elizabeth are getting from their jobs helped them put down permanent roots.

They've also grown their family. In 2022, the Hernandez's adopted a poodle named Valentina. Karen is very excited.

# From Small Things, Big Things Will Grow



**In February 2022, neurosurgeons from Rush University Medical Center implanted the world’s first Intracortical Visual Prosthesis (ICVP) into a participant who has been completely blind since 2016. Only 5 millimeters in diameter, these devices—which are placed directly on the visual cortex, bypassing the retina and optic nerve—are almost literally the seeds from which the prospect of artificial vision may grow.**

Since April 2022, The Chicago Lighthouse has served as the testing center for the trial of the world’s first wireless ICVP, and the results, according to Dr. Patricia Grant, The Lighthouse’s Lauren M. Ross Chair of Low Vision Research and Vice President of Research, are promising. In the following Q&A, Dr. Grant provides an update.

## **What happened during the surgery last February?**

Neurologists from Rush University Medical Center implanted 25 individual wireless floating microelectrode arrays (WFMA) directly onto the participant’s visual cortex of the brain. Each WFMA is small (about the size of a pencil eraser), and each has 16 tiny independently addressable electrodes that provide stimulation to regions of the visual cortex. That’s a total of 400 individual stimulation channels.

## **What are these implants designed to do?**

Electrical stimulation from the electrodes create visual percepts called phosphenes. Our goal is that when the electrodes are stimulated, the phosphenes’ appearance and location, reported by the participant, remain consistent.

## **Is there anything you can say about the preliminary results?**

So far, the data we have collected has been invaluable to the clinical trial. The participant has experienced phosphenes that are described as bright or dark dots or rings that are blueish-white, orange, red or iridescent. Using information from the participant, we have been able to create a map of where each phosphene is located. When we connect the ICVP system to a camera-based headset, the participant can identify their finger and hand moving in front of the camera, the location of a person in the test room, objects on a table, and simple geometric shapes. We expect these abilities to improve as we fill in more detail on the phosphene map.

## What do these findings mean?

First, these preliminary results have provided important information about the safety of the surgery and the implants. We are also learning which WFMA provide the most useful information. These findings will guide WFMA placement for future participants. As we enroll more participants in the study, we will continue to gain more knowledge about the potential of the system.

## What are the next steps for this clinical trial?

For the current participant, we will continue to focus on spatial mapping to further understand where in the participant's visual space electrodes are producing visual percepts. This information will be useful for future work with the camera. In addition, we are actively recruiting additional participants for the study, so we can attempt to replicate these results.

## ICVP Study Group

### The Chicago Lighthouse

Janet Szlyk, Ph.D.—Site  
Principal Investigator  
Patricia Grant, Ph.D.  
Meesa Royster

Frank Lane, Ph.D.  
Michael Barry, Ph.D.  
Kelsey Stipp

### School of Medicine

Gislin Dagnelie, Ph.D.

### University of Chicago

Leo Towle, Ph.D.

### IIT

Phil Troyk, Ph.D.—Principal  
Investigator

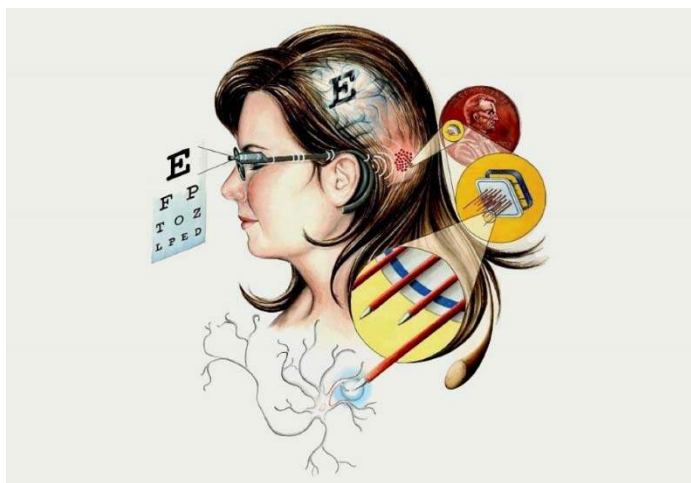
### Rush University Medical Center

Richard Byrne, M.D.

### University of Texas at Dallas

Stuart Cogan, Ph.D.

### Johns Hopkins University



The Intracortical Visual Prosthesis is a set of wireless electrodes—each about the size of a pencil eraser—placed directly on the brain's visual cortex, bypassing the retina and optic nerve. When the electrodes are stimulated, they create visual percepts called phosphenes. During the clinical trial, a participant without light perception has described the phosphenes as bluish-white, orange, red or iridescent dots or rings.



# Extending Community Connections Through Social Enterprise



Founded in 1974, Howard Brown Health is more than a healthcare provider. It is a social service entity that provides clinical health services and works to empower marginalized communities through social programs. The organization serves more than 40,000 individuals every year.

For just over a year, The Chicago Lighthouse has been providing overflow Contact Center Services for Howard Brown Health. According to Jimm E. Cobb, Director of Patient Services, The Lighthouse has proven itself to be an outstanding business and community partner.

## **Why did you choose The Chicago Lighthouse to handle your business?**

The Lighthouse has a roster of great clients: UI Health, Advocate Health Systems and The Illinois Tollway to name a few. They all said great things about their business at The Lighthouse. Plus, you have experience working in the health care sector, which can be complicated and requires certain protocols around privacy. The Lighthouse has those pieces in place, so I knew you could take on the business seamlessly.

## **What else appealed to you?**

As a community organization, we always want to work with another not-for-profit that is making a difference. We had been working with another organization providing these services, but they were in another state and it wasn't really working out. The services you provide in Chicago and the Midwest are local to us. We also have very similar missions, and it seemed like we would be a great fit.

## **How has it worked out?**

We are really enjoying what we're seeing. The Lighthouse is handling our overflow calls, which means any call that we can't answer within two minutes, as well as those that come in after

hours, is picked up by The Lighthouse. As a result, we can help everyone who needs us during busy times.

In March 2023, Mr. Cobb joined The Chicago Lighthouse as Vice President of New Business Development for our Social Enterprise Contact Centers. Welcome to The Lighthouse, Jimm.

Find out more about our Social Business Enterprises at [lighthouseenterprises.org](https://lighthouseenterprises.org).



## Creativity in Bloom in Photography for All Program

Our Photography for All Program teaches youth with visual impairments how to use an iPad's accessibility features to create visual art. This photograph, taken by program participant Adamaris Ayala, was recognized by Apple CEO Tim Cook on Twitter.

Tim Cook said: *"Beautiful work from blind and low vision creators in Chicago's Photography for all summer program. They Described how taking photos on iPhone or iPad is about more than creativity – it's a way to access visual information and explore new places."*

# Celebrating Envision The Future Campaign Success



In July 2020, The Chicago Lighthouse launched a campaign to build our endowment and ensure the organization's long-term financial health. In the three years since, **over 700 Lighthouse friends committed more than \$19 million to the Envision the Future Endowment Campaign, which will sustain our life-changing work for generations to come.**

Caroline Grossinger, Board Member and Chair of the Envision the Future Endowment Campaign, credits the extraordinary success of this effort both to the cause and the donors. "When we began this campaign with a goal of \$7 million, we couldn't have imagined the enthusiastic response from Lighthouse supporters," said Grossinger. "Those who made a gift have invested in the future of our mission. They are deeply committed to our work providing essential services to individuals most in-need."

**We are grateful to everyone who contributed to the Envision the Future Endowment Campaign. The Chicago Lighthouse is a stronger, more impactful organization thanks to your generosity.**

## Planned Giving



### Milton J. Samuelson Society Members

Friends who have remembered The Chicago Lighthouse in their wills or estate plans or who have made another type of planned gift.

Anonymous (80)  
Mr. and Mrs. Steven H. Adelman  
Rick and Patricia Berlet  
Dominic Calabrese  
Franklin and Doralu Chanen  
Helen Collins  
Sandi Dorst  
Susan and Noel Elfant  
Andrzej and Marian Gerlach  
Richard Greenberger  
Bruce and Jamie Hague  
Sandra Horwitz

Ed Jepson  
Lillian Joerger  
Dr. and Mrs. Joel A. Kaplan  
James and Barbara Kesteloot  
Lois Kline  
Margarete Konrath  
Davida Levy  
Cathy Lindfors  
Lee H. Martin  
Judy and Ray McCaskey  
Jennifer and Steve Miller  
Donald G. Morrow

Jeanette Peter  
Kathleen Peter  
Patricia Rees and Patrick  
Romancheck, Sr.  
Paul W. Rink  
Leonard Rodriquez  
Arturo Saenz  
Richard and Patricia Schnadig  
Ann Scher  
Drs. Janet P. Szlyk and Jeffrey M.  
Jackson  
Lila Tankus

For information about making a planned gift to The Chicago Lighthouse, please contact Lora Nickels, Senior Director of Individual Giving, at (312) 997-3643 or email [lora.nickels@chicagolighthouse.org](mailto:lora.nickels@chicagolighthouse.org). If you have remembered us in your will or estate plan, please let us know, so that we can effectively honor your wishes and properly acknowledge your gift

## Lifetime Donors

### \$1,000,000+

Anonymous

Mr.\* and Mrs.\* Charles L. Barancik

The Chicago Community Trust

The Chicago Lighthouse

Associate Board

Foglia Family Foundation

Forsythe Family Foundation^

Julius N. Frankel Foundation

Mr. Corwith Hamill\*

Conrad N. Hilton Foundation

David^ and Nancy Huber

Mrs. Beatrice C. Mayer\*

Mazza Foundation

North Suburban Healthcare Foundation

Polk Bros. Foundation

Robert R. McCormick Foundation

United Way of Metropolitan Chicago

Wohlers Family Foundation

### \$500,000-\$999,999

Mrs. Lindy Bergman\*

The Berner Charitable and Scholarship Foundation

The Boeing Company

Crown Family Philanthropies

Elizabeth Z. Drew Trust

Bruce^ and Jamie Hague

Carrye & Abraham S. Hart Fund

The Healthcare Foundation of Highland Park

Arthur O.\* and Esther O.\* Kane

Kresge Foundation

Mr.^ and Mrs. Marvin Lader

Mrs. Tina Lavezzorio\*

Judy^ and Ray McCaskey

Mr. Fred Mickina Estate

Microsoft Corporation

Irvin Newgren Trust

Mr. and Mrs. Steven N. Pangere

Dr. Scholl Foundation

### \$250,000-\$499,999

Anonymous (3)

Julia Abraham Trust

The Barker Welfare Foundation

BlueCross and BlueShield of Illinois

Larry\* and Susanne Broutman

Fred J. Brunner Foundation

JPMorgan Chase Foundation

Cless Family Foundation

Exelon Corporation

The Foundation Fighting Blindness

Lloyd A. Fry Foundation

Bernice Geriat Trust

Benjamin Benedict Green-Field Foundation

Ralph Juchcinski Trust

Dr. and Mrs. Joel A. Kaplan

Mr. Donald W. Krumrey Trust Estate

Lions Clubs International Foundation

George Martin Sus Trust



Arthur R. Metz Fund, Globe Foundation  
Ann and Walter\* Nathan  
Florence L. Nelson Trust  
Northern Trust Foundation  
Edmond and Alice Opler Foundation

PERT Foundation  
Reader's Digest Partners for Sight Foundation  
The Retirement Research Foundation  
Special Kids Foundation  
Anita Swanstrom Trust

Dollie Swarts Memorial Trust  
Estate of Ernest F. Ulrich  
Peter Wisniewski Trust

## **\$100,000-\$249,999**

Anonymous (4)  
Adreani Foundation  
Helen L. Anderson Trust  
Lester and Edward Anixter Foundation  
Assurance, A Marsh & McLennan Agency LLC Company  
John S. and Christine Bakalar  
Mr. Bernard J. Beazley\*  
Chester Bialczak Trust  
The Blowitz-Ridgeway Foundation  
BMO Harris Bank  
William\* and Rita\* Bold  
BP Amoco, PLC  
Helen Brach Foundation  
Bridgeview Bank Group  
Frank and Doralu Chanen  
CIBC Bank  
Mr. Robert W. Clarke^  
Mrs. Rosanne Cohen  
Lion John R. Coleman  
ComEd  
CompTIA Educational Foundation  
Virginia L. Connolly Trust  
Abe and Ida Cooper Foundation  
CSX Corporation  
The Patrick and Anna M. Cudahy Fund  
Dr.^ and Mrs. Thomas A. Deutsch

Ernst & Young LLP  
Henry Erskine, Jr. Marital and Family Trust  
The Field Foundation of Illinois  
First Nonprofit Foundation  
Robert W. Galvin Foundation  
Mrs. Mary B. Galvin  
The John S. and Christine S. Gates Charitable Trust  
Mr. H. Dennis Giertz  
Max Goldenberg Foundation  
Goldman Sachs & Company  
The Robert J. Gunterberg Charitable Foundation  
The Leo S. Guthman Fund  
Hamill Family Foundation  
The Irving Harris Foundation  
Frederick E. & Ida H. Hummel Foundation  
Evelyn L. Kilker Trust  
Marjorie Klecar Trust  
Carl\* and Margarete Konrath  
Dr. Manus C. Kraff^  
Ms. Shirley Langridge\*  
Ms. Elizabeth Amy Liebman  
Mrs. Mary E. Liebman\*  
Elick and Charlotte Lindon Charitable Trust  
Lions of Illinois Foundation

Irma Lobe Trust  
Locke Lord LLP  
McDonald's Corporation  
Michael Reese Health Trust  
The Elizabeth Morse Charitable Trust  
Elizabeth Morse Genius Charitable Trust  
The Northern Trust Company  
Michelle and Gary^ Rich  
Ronald McDonald House Charities, Chicagoland & NW Indiana  
Steven\* and Ruth Ross  
Carl H. Sandin Trust  
Richard^ and Patricia Schnadig  
The Siragusa Family Foundation  
Mr. Milan Sluka\*  
SmithBarney Citigroup, Inc.  
The Edward S. Sprague Foundation  
James and JoAnne\* Steinback  
Roger\* and Susan Stone  
Drs. Janet P. Szlyk^~ and Jeffrey M. Jackson  
Target Corporation  
Topfer Family Foundation  
William Keith Turner Trust  
Abbie E. Tyrrell Fund  
Mrs. Lois Unell  
Union Pacific Foundation

Mr. Theodore M. Utchen\*  
The A. Montgomery Ward  
Foundation  
Wilczynski Trust

Richard H.\* and Diane\* Wille  
William Blair & Company  
Foundation  
Ethel Wiseman Trust

George H. Zendt Charitable Trust

\*Deceased

^Board Member

~Staff

## The Corwith Hamill Society



The Corwith Hamill Society honors and recognizes our generous long-term donors. Gold is for 20 or more years of continuous giving; silver is for 15 and bronze is for 10.

Corwith Hamill was The Lighthouse's longest continuous donor. When he passed away in 2013 at the age of 99, he had donated to The Lighthouse for the majority of his life. In recognition of Mr. Hamill and his generosity to us, we created a society named in his memory.

### Gold Level

#### (20+ years of continuous giving)

Anonymous (4)

Mr. and Mrs. Steven H. Adelman

Shirle Affeldt+

Mr. Joseph B. Annenberg

Dr. and Mrs. Alan J. Axelrod

Mrs. Haley L. Baer

Ms. Sarah J. Baker

The Barker Welfare Foundation

Mrs. Lynn Barnett

Mr. Kenneth G. Bauske

Mr. Thomas R. Bell

Mrs. Rita B. Benesch

Mr. and Mrs. Mark H. Berens

Mrs. Susan Berk

Mr. and Mrs. Rick Berlet

The Berner Charitable and  
Scholarship Foundation

Mrs. Violet Berta

Mr. and Mrs. Jerzy Blazejewski

Mrs. Jill Bleiman

The Boeing Company

Mr. and Mrs. Abraham Bohrer

Mr. and Mrs. Albert H. Bolger

Mr. and Mrs. Howard J. Bolotin

Mrs. Gail B. Boorstein

Mr. Norman A. Brabec

Ms. Nena Bradshaw

Mrs. Karen A. Brenner

Miss Judith C. Brinkman

Mr. and Mrs. David Brint+

Fred J. Brunner Foundation

Mr. John C. Buddig

Mr. and Mrs. William R. Buecking

Mrs. Nancy Burstyn

Mr. and Mrs. Arthur Callistein

Mr. and Mrs. Robert Carroll+

Central Lions Club of Chicago

Central Steel & Wire Company

Frank and Doralu Chanen

Mr. John D. Chaney	Mr. H. Dennis Giertz	Mrs. Sondra F. Kraff
Mrs. Burnetta Cloos	Mrs. Jan Gilberg	Dr. Cheryl Kraff-Cooper and Mr. Carey Cooper
Ms. Debra L. Cohen	Mr. and Mrs. Scott Gilbert	Ms. Irene Krolis
Mrs. Lynn Cohen	Mrs. Kris A. Glicken	Mr. Frank R. Krom
Ms. Marcia E. Cohen+	Mr. and Mrs. George M. Gogola+	Mr. Perry Kupietz
Mrs. Rosanne Cohen	Max Goldenberg Foundation	Mr. and Mrs. Robert Lassen
Mr. James Coleman	Goldman Sachs & Company	Mr. and Mrs. Daniel G. Lee
Mrs. Jane B. Colman	Mrs. Nancy Grayheck	Mrs. Deborah Leeb
Mrs. Elizabeth E. Copeland	Ms. Louise E. Grieshaber	Mr. and Mrs. Mark H. Leeds
Mrs. Marian M. Costello	Mr. and Mrs. Eston M. Gross	Mrs. Pamela Leslie
Mrs. Muriel L. Cowen	Mr. Robert R. Gross	Mr. and Mrs. Gary Levenstein
Mr. Joseph J. Crickard	Mrs. Sheila H. Gutman+	Mrs. Cindy Levy
Ms. Michelina D'Agostino	Mr. Adolph J. Habich	Mrs. Debra F. Lewin
Dr.^ and Mrs. Thomas A. Deutsch	Hamill Family Foundation	Mrs. Lynne Green Lieber
Mrs. Patricia A. DeWolf	Mr. Richard P. Hamlin	Ms. Mary Anne Limbos
Mr. Vincent Dina	Mr. and Mrs. Matt Hart+	Mrs. Patricia M. Livingston
Mr. Leo J. Domzalski	Mr. and Mrs. Ernst K. Heimann	Locke Lord LLP+
Mr. Tom Donegan	Mr. and Mrs. Robert F. Hilliard	Mrs. Jodi S. Loeb
Mr. and Mrs. Denis Dywan	Dr. and Mrs. Arnold Hirsch	Mr. and Mrs. Terrence J. Longo
Mr. and Mrs. Keith Edmonson	Mr. and Mrs. Richard M. Hirsch	Mr. and Mrs. Arthur A. Malinowski
Mr. and Mrs. Stephen Eich	Mrs. Barbara R. Hollenberg	Mrs. Susan A. Mandell
Mr. Terry Elliott	Ms. Mary K. Howe~	Mrs. Nina Mann
Ms. Lucy P. Evans	Mrs. Pamela M. Hoxsey	Mr. and Mrs. Thomas Mazukelli
Mr. Thomas W. Fahy	Ms. Helen Jahnke	Mr. Richard H. Medland
Ms. J.A. Fellows	Jerry and Mary Lynne Januszewski	Mrs. Monica Mellovitz
Mr. Sam W. Fiarman	Jocarno Fund	Arthur R. Metz Fund, Globe Foundation
Rocco Fiore & Sons Inc.	Mrs. Judith Kahn	Midwest Truck & Auto Parts, Inc.+
Mr. August Fischer, Jr.	Dr. and Mrs. Joel A. Kaplan	Mr. and Mrs. Edward Mizicko+
Mrs. Ava L. Fogel	Mr. and Mrs. Max S. Kasper	Mrs. Sheila M. Moss
Bruce W. Foudree and Suzanne Reade	Mrs. Jill Katlin	Mrs. Shareefah Muhammad
Julius N. Frankel Foundation	Mr. and Mrs. Michael C. Keenan	Mr. Marion Musacchio
Mr. and Mrs. William J. Frankel	Jim^ and Barbara Kesteloot	Mrs. Lynn Muslin
Ms. Isabel E. Franzen	Mrs. Heidi Kirsch	Mr. and Mrs. Frederick J. Nachman
Mr. and Mrs. Franklin K. Fredriksen	Gerald A. & Karen A. Kolschowsky Foundation+	Mr. James E. Neuhauser+
Mrs. Jo Ann Galston	Mrs. Janice A. Korn	Mr. and Mrs. William North
	Dr. and Mrs. Colman Kraff	

Northwest Lions Club+  
 Edmond and Alice Opler  
 Foundation  
 Ms. Joan L. Oslan+  
 Mrs. Jaclyn Patinkin  
 Mr. Murry Perkins  
 Ms. Brenda R. Pessin  
 Ms. Beverly V. Peters  
 Mrs. Jean Petryniec  
 Mrs. Karen Gutheim Pinsof  
 William K. Platt, M.D.  
 Ms. Blanche M. Raab  
 Mrs. Susan K. Raskin  
 Mr. and Mrs. Fred R. Refner  
 Mr. James G. Ring  
 Mr. Paul W. Rink^  
 Riverside Township Lions Club  
 Mr. and Mrs. Lonnie Roberts  
 Harriett Robinson and Keith Bruns  
 Mr. Leonard Rodriguez  
 Mr. and Mrs. Alfred M. Rogers, Jr.  
 Mrs. Eve Rooth  
 Dr. and Mrs. Robert L. Rosen  
 Mrs. Helga Rosenberg  
 Benjamin J. Rosenthal Foundation  
 Mr. and Mrs. Warner A. Rosenthal

Mr. David A. Ross+  
 Mr. and Mrs. Lawrence P.  
 Rowells+  
 Mrs. Rochelle D. Rubinoff  
 Mrs. Alison Salzman  
 Ramona C. Samuelson~  
 Mrs. Marjorie Sandlow+  
 Mr. Paul L. Schmelzer  
 Mrs. Claudia P. Schwartz  
 Mrs. Roslyn Schwartz  
 Ms. Sally Schwartz  
 Mr. and Mrs. Stephen  
 Schwellenbach  
 Mr. Warren R. Sedlacek  
 Mrs. Ilene Shaw  
 Mrs. Geraldine A. Siena  
 The Siragusa Family Foundation  
 Mr. and Mrs. Robert Smith  
 Mrs. Julie L. Smith  
 Ms. Thomasina Smith  
 Mrs. Jean C. Sobek  
 The Edward S. Sprague Foundation  
 Mrs. Clara Stasior  
 Mrs. Paula M. Stendel  
 Ms. Susan Stern  
 Ms. Eydie L. Sternberg

Mr. and Mrs. William I. Swedler  
 Mr. Charles A. Tausche  
 Ms. Dorothy M. Thomas  
 Mr. Edward J. Thompson  
 Ms. Lois A. Tortorelli  
 Ms. Susan Ulaszek+  
 United Way of Metropolitan  
 Chicago  
 Mr. Dainius Valiukenas  
 Mr. Ray Van Dyke  
 Mr. Steven Walczynski  
 Mrs. Lois Waller  
 Mrs. Barbara Walner  
 Ms. Carole A. Walsh  
 Mrs. Debbie Warsh  
 Mr. Edward W. Wavak  
 Samuel Weinstein Family  
 Foundation  
 Mr. Robert J. Wendler  
 Mrs. Gloria Wexler  
 Mr. Michael P. Whelan  
 Mrs. Laura P. White  
 Mr. and Mrs. Howard Wolff  
 Mrs. Alison Yastrow  
 Mr. and Mrs. Peter Yastrow

## SILVER Level

### (15+ years of continuous giving)

Anonymous (3)  
 Adreani Foundation  
 Advanced Sprinkler Systems, Inc.  
 Mr. Leroy R. Anderson  
 Ms. Barbara J. Baer  
 Mr. and Mrs. Matthew A. Baer  
 Mr. and Mrs. Rudolf Bajzek  
 Ms. Diana Baldacci

Mrs. Sue Bergen  
 Mrs. Jennie Berk  
 Mr. and Mrs. Donald Blakey+  
 Bloomingdale Lions Club  
 Ms. Carlene M. Blumenthal  
 Dr. Steven U. Brint  
 Scott Byron & Company  
 Mr. Dominic Calabrese

Mr. and Mrs. Bernard J. Campbell  
 Carol J. Carl  
 Mrs. Linda Carpenter  
 Mr. and Mrs. Walter S. Carr  
 Chicago Mexica Lions Club  
 Chicago Stereo Camera Club+  
 Mrs. Lois Chudacoff  
 CIBC Bank+



Mr. Ali Cinar	Mrs. Dolores C. Jilovec+	Polk Bros. Foundation
Lion John R. Coleman	Mr. Thomas R. Johnston	Ms. Susan Kushner Pollack
Kara Crumbliss, O.D.~	Ms. Liane J. Joseph	Mr. and Mrs. James E. Pushaw
CSX Corporation+	Dr. and Mrs. Douglas S. Kaplan+	Mrs. Lynn C. Razowsky
Mr. Rick M. Daitchman	Mr. Jean-Claude B. Kappler	Mr. and Mrs. Robert C. Rheinheimer
Davis Imperial Cleaners, Inc.	Mr. Keith A. Kebernik	Mr. Allen J. Rogers
Russell and Frieda De Yong Foundation+	Dr. Manus C. Kraff^	Steven*and Ruth Ross+
Mr. Al Dorevitch	Ms. Edith Kubas	Mr. and Mrs. Robert N. Rourke
Mr. and Mrs. Richard M. Doub	La Grange Highlands Lions Club	Mr. and Mrs. David Rushing
Exelon Corporation+	Mr. and Mrs. Emerson W. Lacey, Jr.	Mr. Frank Russo+
Mrs. Carmen E. Fair	Mr.^ and Mrs. Marvin Lader	Mr. and Mrs. Joseph Samuels
Ms. Leslie G. Finkle	Mrs. Alyce I. Lang	Mr. and Mrs. Joseph I. Sana
Mr. and Mrs. Jon W. Fisher	Mr. and Mrs. Joseph A. Lasky	Ms. Marika O. Schaefer
Dr. and Mrs. Gerald A. Fishman	Mrs. Julie L. Lehrman	Mr. James W. Schmitt
Mr. George V. Fluks	Mrs. Andrea W. Leshem	Ms. Linda G. Schub and Mr. Jay Wightman
Dr. Andrew W. Forrester	Mrs. Lorrie Levitz	Richard A. Shapiro, M.D.
Fox River Grove Lions Club Inc	Mr.^ and Mrs. Thomas E. Livingston	Mrs. Roslyn C. Sheppard
Mrs. Debbie S. Frank	Mrs. Tamara Lorber	Mr. and Mrs. David Shine+
Dr. Kelly A. Frantz and Mr. Karl J. Frantz	Mr. and Mrs. David J. Malina	Mrs. Melissa Silverman
Ms. Lynn Froy	Mr. and Mrs. Randy Markowitz	Mr. and Mrs. Richard P. Small
Mr. and Mrs. Richard V. Furnari	Judy^ and Ray McCaskey	Mrs. Mary Ann Spyrisson+
Mrs. Constance J. Galliat	Mr. R. V. McGrath	Rabbi Steven Lowenstein and
Elissa Geier, Psy.D.	Mr. and Mrs.^ William McNally	Mrs. Julie Stark^
Mr. Frank Giglio+	Mrs. Penny Meyers	Mr. and Mrs. Irvin M. Stein
Grant Thornton LLP+	Ms. Margaret M. Michalski	Mr. and Mrs. Ronald A. Stepp
Mrs. Gerilyn A. Greenberg	Mrs. Gloria G. Morison	Mr. and Mrs. Phillip L. Stern
Ms. Ellen F. Gross	Ms. Myrna Natkin	Mrs. Mindy B. Sterns
Mr. and Mrs. William R. Hagedorn	Mr. Patrick W. O'Leary	Mr. Warren G. Stober
Bruce^ and Jamie Hague	Ms. Amy W. Olswang	Mrs. Julie Stracks
Harris and Harris LTD	Mr. and Mrs. Charles Perlman	Drs. Janet P. Szlyk^ ~ and
Mrs. Gayle Harris	Mr. Pasquale Perrone	Jeffrey M. Jackson
Ms. Nancy Hartman	Mrs. Jeanette S. Peter	Ms. Anna L. Thomas
The Healthcare Foundation of	Mrs. Debbie Piolet	Mr. John L. Toboja
Highland Park+	Mrs. Francine Pine	Mr. Don Toy
Ms. Juanita L. Jefferson	Ms. Deloris Pinkney	Mr. and Mrs. Donald J. Vilim

Mrs. Sheila G. Wexler and Mr.  
Philip Block  
Willow Springs Lioness Club

Mr. Harvey W. Wittenberg  
Mr. and Mrs. James P. Young  
Mr. and Mrs. Jerrold H. Zar

Ms. Helene S. Zarcone  
Dr. and Mrs. Simon Zimnowodzki

## BRONZE Level

### (10+ years of continuous giving)

Ms. Letty Abel  
Mr. and Mrs. William Abrams  
Ms. Mary Abramson~  
Mrs. Debora P Aghion  
Ms. Janet L. Ahrensfield  
Alden Management Services  
AL-TY Corporation (Norton's  
Restaurant)  
Andrea and Richard Amend  
Mr. and Mrs. Breman Anderson  
Mr. and Mrs. Robert G. Anderson  
Jr  
Mr. and Mrs. John S. Anthony  
Art Optical Contact Lens, Inc.  
Mr. and Mrs. Peter M. Ascoli  
Assurance Agency, Ltd.  
Mr. Edward J. Bednarz+  
Mr. and Mrs. Donald A. Belgrad  
Dr. and Mrs. Ira J. Bernstein  
Mr. and Mrs.~ Peter Birmingham+  
Mr. and Mrs. Philip Blackwell  
Marcia E. Blake, O.D.  
Ms. Susan Block  
Mrs. Ruth Goodman Blum  
BMO Harris Bank+  
Mrs. Sherrill Bodine+  
Helen Brach Foundation  
Mr. Robert D. Brazil+  
Mr. Preston Bricker  
Brinshore Development, LLC  
Ms. Elaine Britton

Ms. Anne L. Buda  
Mr. Robert F. Callbeck and Ms.  
Margaret L. Waverly  
Mr. Michael D. Carey  
Mr. and Mrs. William T. Carey III  
Ms. Carol L. Carr  
Mr. and Mrs. Joseph M. Carroll  
Mrs. Melissa Small-Cefalu and  
Mr. Peter Cefalu+  
Harry F. & Elaine M. Chaddick  
Foundation Inc.  
Lion John C. Chisum  
Mr. Robert W. Churchill  
Ms. Alexandra Churma  
Clarendon Hills Lions Club  
Mr. Robert W. Clarke^  
Ms. Michelle Clyne and Mr. John  
Paprocki  
Ms. Anida Johnson "Cookie"  
Cohen^  
Dr. Michael and Mrs. Virginia  
Conrad  
Abe and Ida Cooper Foundation+  
Cooper Management Co., LLC+  
Mr. and Mrs. Robert L. Cormier  
Mr. and Mrs. Noel P. Cusick  
Mr. Michael A. Davis  
Mr. and Mrs. Edward D. De Boer+  
de Giulio kitchen design, inc.  
Mr. and Mrs. Robert O. Delaney  
Ms. Barbara Desmond  
Ms. Catherine E. K. Diggle

Mr. Charles Diorka  
Mrs. Mary D. Disis  
District 1-A Lions Clubs  
Mr. and Mrs. James E. Drexler  
Mr. Albert J. Dru  
Ms. Colleen C. Dwyer  
Mr. William J. Dzialo  
Mr. and Mrs. Joseph Ebster  
Mrs. Sally Eide  
Mrs. Margaret Ellsworth+  
The Evangelical Lutheran Church  
of the Good Shepherd  
Evergreen Park Lions Club  
Family Club Solta  
Mr. Nairn Farnsworth  
Mr. and Mrs. Edward Filippini  
Ms. Phyllis L. Fineberg  
Ms. Christine M. Fiorito  
Mr. and Mrs. Randolph H. Foster  
Mrs. Arlene Frommer  
Ms. Joan T. Gagen  
Mrs. Janet R. Gates  
Mrs. Arlene Gellis Segal  
Mr. David R. Gerber  
Mr. and Mrs. Dean Gerber  
Glen Ellyn Lions Club  
Mrs. Susan G. Gohl+  
Mr. Arnold Goldstein  
Ms. Dianne E. Goren  
Ms. Susan K. Gumbiner+

Ms. Beverly Gumola	Keyth Group Companies	Mr. and Mrs. Steve Miller
Mr. and Mrs. Glenn Hagberg	Mr. Robert Kim	Mr. and Mrs. Martin Miretzky
Mr. and Mrs. Ernest Hamel	Mr. and Mrs. Michael J. Kinn	Ms. Ericka E. Mixon
Ms. Karen S. Hammermeister	Mr. and Mrs. Philip Kinsella	Mr. and Mrs. Morton R. Mollner
Ms. Gwendolyn Harris	Mr. and Mrs. Fred Klage, Jr.	Ms. Clara S. Moran
James M. Harris, O.D.	Mr. and Mrs. Roger S. Knopf	Mr. George W. Morris
Mrs. Amy Hausman+	Ms. Myrna B. Kopin	Dr. and Mrs. Gregory Moss
Ms. Pam Hay+	Ms. Lois Krabec	Mr. and Mrs. Peter C. Moy
Mrs. Jeanene C. Hazen	Ms. Cynthia E. Krch	Mr. and Mrs. Theodore F. Mueller
Ms. Heather E. Hebbeler	Mr. and Mrs. Lawrence P. Lanciotti	Mr. Richard Musson
Mr. William Held	Mr. Richard A. Landgraff+	Mr. and Mrs. Michael Nadler
Mr. and Mrs. Richard Herman	Latkin Family Foundation	Naperville Noon Lions Club
Mr. Leo F. Hickman	Mr. Steven Laughman	Mrs. Ann Nathan
Highland Park Joy Cleaners Inc.	Ms. Shirley Lauriano	Ms. Mary M. Naughton
Mrs. Joan Holleb	Mrs. Kirsten Laurie	Marguerite L. Nelson
Mrs. Carol Honigberg	Ms. Cheri Lawrence+	Mr. Timothy P. Neylon
Mrs. Marianne S. Horowitz	Mr. and Mrs. Michael Leaf	Ms. LaVerne A. Nichols
David^ and Nancy Huber	Lefkovitz Foundation+	Non Profit Risk Services, Inc.
Ms. Jayne A. Hultman	Ms. Davida Levy	Mr. Gerald L. O'Donnell
Frederick E. & Ida H. Hummel Foundation+	Ms. Judith R. Levy	Mr. and Mrs. Brian Oriente
Mr. and Mrs. Richard L. Jacobs	Mrs. Laurie F. Lieberman	Ms. Julie Overbeck
Ms. Donna G. Jaggard	Ms. Mary Lu Linnane	Mrs. Marla B. Patzik
Mr. Richard Jankowicz	Mr. and Mrs. Vincent L. Locascio	Mr. and Mrs. James J. Pelts
Mr. R. Razz Jenkins and	Lodge Friendship No. 66 C.S.A.	Perkins Coie LLP+
Prof. Patti Interrante	Mrs. Joan Loeb	Mr. and Mrs. Robert Perkins
Mr. Edward C. Jepson^+	Mr. Joseph S. Lushnia	Mrs. Sally Jo Pfaff+
Dr. Mary Kay Johnson	Mrs. Roberta G. Mann	Ms. Virginia L. Phillips
Jolie Maison, LTD	Mr. Robert F. Mantsh~	Ms. Joyce Plecki
Mr. and Mrs. John C. Jones	Mariani Enterprises, Inc.	Ms. Elizabeth M. Postell
Mrs. Jaclyn Joseph	DBA Mariani Landscape	Primex, Inc.
Mr. and Mrs. Reid C. Kanies	Mattingly Low Vision, Inc.	Ms. Nancy Rein
Mrs. Cindy Kaplan	Mr. Mark McGee	Retina Consultants, LTD
Mr. and Mrs. Robert N. Kaplan	Mr.^ and Mrs. Michael Meehan	Michelle and Gary^ Rich
Mrs. Edna Kaucher	Metro Commercial Real Estate, Inc.	Mr. Lester Rockoff
Mr. and Mrs. Michael Kearney	Mr. and Mrs. Carl Meyer	Mr. and Mrs. Irwin Ross
Mr. Michael L. Kelly	Ms. Barbara Miller	Mrs. Lisa E. Rush
		Mr. and Mrs. Joseph F. Ruth

Mr. Jack A. Ryan  
 Mr. and Mrs. Roger Salemi  
 Ms. Mary Beth Schirmang  
 Mr. Edward Schmidt  
 Richard^ and Patricia Schnadig  
 Dr. Scholl Foundation  
 Mrs. Kim Schwartz  
 Mrs. Lili Schwartz  
 Mrs. Roberta Seedman  
 Mr. and Mrs. Charles Shemely  
 Ms. Martha Sichau  
 Mrs. Jody Silverman  
 Mr. Leonard P. Slotkowski, Jr.  
 Ms. Mary Jane Smilanik  
 Mrs. Deborah L. Smith  
 Mr. and Mrs. Zygmunt K. Sokolnicki  
 Mr. Leonard F. Stein  
 Mr. Robert L. Stephenson

Mrs. Alison Stolberg  
 Mr. and Mrs. Robert Stone  
 Mrs. Kim Strauss  
 Mr. and Mrs. Howard E. Swider+  
 Mr. Thomas Swigart, Jr.  
 Mr. Kenneth L. Tarnoff  
 Mrs. Nancy M. Taxman  
 Mr. and Mrs. Dwight Tedford+  
 Mr. Thomas Theodore  
 Thompson Family Foundation  
 Tinley Park Lioness Club  
 Mr. and Mrs. Jack Tobias  
 Mr. and Mrs. Stan Tryba  
 Mrs. Ilene C. Tucker+  
 Mr. Pete and Mrs. Pam Tully  
 Mr. Eric F. Ulaszek  
 Union Pacific Foundation  
 Ms. Lydia Usha  
 Ms. Shirley A. Vallort

Mr. and Mrs. Edward M. Vitu  
 Ms. Katherine Wachowski  
 Mr. and Mrs. Johannes Weertman  
 Mr. and Mrs. Robert G. Wegner, Jr.  
 Ms. Dorothy R. Weiskopf  
 Mr. and Mrs. Ernest E. Werle  
 Ms. Virginia S. Willcox  
 Ms. Judith L. Williams  
 Ms. Karleen Williams  
 Mr. and Mrs. Michael J. Windle  
 Mr. and Mrs. Edmund F. Wisz  
 Wohlers Family Foundation  
 Mr. William W. Woodfill+  
 Mr. and Mrs. Dewey Young  
 Mr. Adam M. Zebelian+  
 Mr. and Mrs. Robert K. Zentner+  
 Ms. Jane Ziebart  
 Ms. Susan Zissman

\*Deceased

^Board Member

~Staff

+Moved up a giving level



# Lighthouse Keepers

The Lighthouse Keepers is a group of special friends of The Lighthouse who annually give \$1,000 or more. We regret we cannot list every donor but we extend our sincere thanks to each and every one! (This list reflects cumulative gifts of more than \$1,000 received between July 1, 2021 and June 30, 2022.)

## \$250,000 and above

Foglia Family Foundation

Mr.^ and Mrs. Marvin Lader

Forsythe Family Foundation^

Robert R. McCormick Foundation

## \$100,000 - \$249,999

The Chicago Community Trust

Steven\* and Ruth Ross

Wohlers Family Foundation

Mr. and Mrs. Steven N. Pangere

Peter Wisniewski Trust

## \$50,000 - \$99,999

Anonymous

IMC Chicago Charitable Foundation

The Elizabeth Morse Charitable Trust

Cless Family Foundation

Mr. Donald W. Krumrey\*

Polk Bros. Foundation

Crown Family Philanthropies

Judy^ and Ray McCaskey

Virginia Townsend Trust

## \$25,000 - \$49,999

BMO Harris Bank

Bruce^ and Jamie Hague

Reader's Digest Partners for Sight Foundation

Helen Brach Foundation

David^ and Nancy Huber

Mrs. Ilene Shaw

Mr. Robert W. Clarke^

Mr. Ron Katz\* and Ms. Cheryl Colman

The Siragusa Family Foundation

Abe and Ida Cooper Foundation

Leo Krupa Foundation

Special Kids Foundation

Julius N. Frankel Foundation

PERT Foundation

The Stahl Family Charitable Foundation

Green Family Foundation

The Leo S. Guthman Fund

## \$10,000 - \$24,999

Anonymous (5)

Scholarship Foundation

Comcast

Ackerman Foundation, Inc.

Mr. Brent Brodeski

ComEd

Adreani Foundation

Larry\* and Susanne Broutman

Alverin M. Cornell Foundation

Assurance, A Marsh & McLennan Agency LLC Company

Fred J. Brunner Foundation

The Patrick and Anna M. Cudahy Fund

Charles and Margery Barancik Foundation

Paul and Pearl Caslow Foundation

D and R Fund

CIBC Bank

DAV Charitable Service Trust

The Berner Charitable and

Elizabeth M. Claus Charitable Trust

Mr. David A. Dohnalek

The Field Foundation of Illinois  
 Andrew and Alice Fischer  
 Charitable Trust  
 Mrs. Nancy J. Frankenbach  
 Mrs. Susan G. Gohl  
 Ellis Goodman Family Foundation  
 Ms. Caroline Grossinger^  
 Carrye & Abraham S. Hart Fund  
 The Healthcare Foundation of  
 Highland Park  
 The Hejdoneck Family  
 Frederick E. & Ida H. Hummel  
 Foundation  
 Mr. Edward C. Jepson^  
 Mrs. Beena Joseph^  
 Gerald A. & Karen A. Kolschowsky  
 Foundation

Mr. and Mrs. Lawrence F. Levy  
 Ms. Elizabeth Amy Liebman  
 Lincoln Park Music Center  
 Foundation  
 Elick and Charlotte Lindon  
 Charitable Trust  
 Robert and Linda Manning  
 Ellen^ and Todd Martin  
 Mazza Foundation  
 Arthur R. Metz Fund, Globe  
 Foundation  
 Northern Trust Foundation  
 Mr. Patrick J. O'Hara  
 Edmond and Alice Opler  
 Foundation  
 The Owens Foundation  
 Perkins Coie LLP

Michelle and Gary^ Rich  
 Mr. and Mrs. Michael Sacks  
 Dr. Scholl Foundation  
 Sea Products  
 Laura and Adam Selipsky  
 Rabbi Steven Lowenstein and  
 Mrs. Julie Stark^  
 Dollie Swarts Memorial Trust  
 Mr. Don Toy  
 Union Pacific Foundation  
 Mr. Ray Van Dyke  
 The A. Montgomery Ward  
 Foundation  
 Mr. Michael Yannell  
 Ms. Megan E. Young

## **\$5,000 - \$9,999**

Anonymous (4)  
 AHEPA National Housing  
 Corporation  
 Athletico  
 Mr. Paul A. Bartman  
 Mr. and Mrs. Ed Blatchford  
 BlueCross and BlueShield of Illinois  
 Harry F. & Elaine M. Chaddick  
 Foundation Inc.  
 Mrs. Rosanne Cohen  
 Lion John R. Coleman  
 Harvey and Ethel Daeumer  
 Foundation  
 Dr.^ and Mrs. Thomas A. Deutsch  
 Glenview Lions Club  
 Max Goldenberg Foundation  
 Goldman Sachs & Company  
 Google LLC

Mr. and Mrs. William Hansen  
 Helen M. Harrison Foundation,  
 Inc.  
 Ms. Helen T. Kennedy Trust  
 Dr. Cheryl Kraff-Cooper and  
 Mr. Carey Cooper  
 Dr. Manus C. Kraff^  
 Ms. Deborah M. Lader  
 Dr. Frank J. Lane  
 Mrs. Averill Leviton  
 Mrs. Patricia M. Livingston  
 Mr.^ and Mrs. Thomas E.  
 Livingston  
 Locke Lord LLP  
 Mr. and Mrs.^ William McNally  
 Mr.^ and Mrs. Michael Meehan  
 Nesko Electric Company  
 Pave Works  
 Paycom

Mr.^ and Mrs. John A. Raske  
 Ms. Susan Regenstein  
 Mr. Paul W. Rink^  
 Benjamin J. Rosenthal Foundation  
 Savant Wealth Management  
 Mrs. Sheree Schimmer^  
 Mr.^ and Mrs. Richard H. Schnadig  
 Dr. Saumil Shah  
 Mr. Joseph Skora Trust  
 Ms. Elizabeth Smith  
 Drs. Janet P. Szlyk^ ~ and  
 Jeffrey M. Jackson  
 TCN  
 UI Health  
 Mr. Kirk Wagenbach  
 Ms. Catherine J. Wytzka  
 George H. Zendt Charitable Trust

## \$2,500 - \$4,999

Anonymous (3)	Dr. and Mrs. Joel A. Kaplan	River Grove Lions Club
Mr. and Mrs. Mark Andrade	Jim^ and Barbara Kesteloot	Ms. Corinne P. Rohr
Mr. and Mrs. Peter M. Ascoli	Ms. Sandra Kinder-Guido	Saks Fifth Avenue (Chicago)
Mrs. Stephanie Baum	Mr. and Mrs. Wayne Kocourek	Ms. Sally Schwartz
Mr. and Mrs. Donald A. Belgrad	Mr. and Mrs. James Lasky	Mrs. Junia Shlaustas
Mr. and Mrs. Neal Berz	Lefkovitz Foundation	Ms. Theresa Strnad
The Boeing Company	Mrs. Nina Mann	Turano Baking Company
Mr. and Mrs. Sherwood Bollier	Mr. and Mrs. Michael Maschmeyer	Abbie E. Tyrrell Fund
Mr. and Mrs. David Brint	Miller Cooper & Co Ltd	United Way of Metropolitan Chicago
Mr.^ and Mrs. Joel Bruckman	MIS Computer	Mr. Elliot Wagner and Ms. Lauren Yeager
Delta Building Technologies	Mr. and Mrs. Kurt A. Muller	WD Schorsch
Freeborn & Peters LLP	Mrs. Ann Nathan	Samuel Weinstein Family Foundation
Mr. Bart Freihaut	Ms. Doris J. Newton	Mr. David Weisberg
Gold Standard Enterprises, Inc. D/B/A Binny's Beverage Depot	Mrs. Sally Jo Pfaff	Mr. and Mrs. Mark Wolfe
Mr. Jonathan Grabill	Raden Wellness	Woodward, Inc.
Grant Thornton LLP	Mr. and Mrs. Robert Randolph	Harold D. and Hazel C. Wright Foundation
Hochberg Family Foundation	Retina Consultants, LTD	WSFS Cares Foundation
Jewel-Osco	Mr. and Mrs. Nicholas Retson	Mark and Barbara Yeager
JLL	Ms. Susan Richman and Mr. Peter Manis	
Mr. and Mrs. John C. Jones		

## \$1,000 - \$2,499

Anonymous (3)	Mrs. Sherrill Bodine	Central Lions Club of Chicago
Mr. and Mrs. William Abrams	Kevin Boeckenhauer Family Foundation	Frank and Doralu Chanen
Dr. and Mrs. Kenneth Alexander	Mrs. Paula Borg	City Staffing
Ms. Evelyn Alter	Ms. Eleni Bousis	Clarendon Hills Lions Club
Mr. Ronald L. Anderson	Mr. Richard R. Boykin^	Community Foundation of the Fox River Valley
Mr. Matt Arnoux	Judge and Mr. William Boyle	Dr. Michael and Mrs. Virginia Conrad
Mr. Eric Atkersom	Mr. and Mrs. James E. Bramsen	Mrs. Kathleen Cook
Bank Of America United Way Campaign	Mr. Tom Brean	Mr. Jose Cruz
Dr. Robert Barnes	Mr. and Mrs. William R. Buecking	John and Angela~ D'Antonio
Mr. and Mrs.~ Peter Birmingham	Mr. and Mrs. Walter S. Carr	Darien Lions Club
Ms. Jill Birringer	Mrs. Becky Carter	

Mrs. Andrea Daube	Ms. Charlotte Jackson	Mr. Thomas Osborne
Delta Gamma, Chicago North Shore Alumnae	Jerry and Mary Lynne Januszewski	The Pace Family Fund
Alex Demond Fund	Jocarno Fund	Palos Lions Club
DocuSign	Ms. Dorothy A. Kapchinski	Patzik, Frank and Samotny, Ltd.
Ms. Melody Dworin	Dr. and Mrs. Douglas S. Kaplan	Mr. William G. Paullin*
George M. Eisenberg Foundation for Charities	Mr. and Mrs. Robert N. Kaplan	Mr. Mark Peskor
Mr. and Mrs. David Eldersveld	Mr. Farooq Khan	Mr. and Mrs. James Pillars
Ellie Thompson + Co.	Mrs. Kristine Kinder	Pinnacle Development
Exelon Corporation	Ms. Patricia A. Kosmerl	Poker Power
Ms. Alison Faith	Mr. Jason Kowalczyk	Ms. Jill D. Rein
Mrs. Kimberly Filan	Dr. Caryn and Mr. Lowell Kraff	Mr. and Mrs.^ Stacy Rhoads
Rocco Fiore & Sons Inc.	Dr. and Mrs. Colman Kraff	Mr. Ferencz Rigo
Mr. and Mrs. Jon W. Fisher	Mr. Steven Laughman	Roberts Family Foundation
Mr. and Mrs. Kenneth Fishman	Mrs. Debra Learner	Ms. Colleen Roberts
Ms. Marianne Fontes	Ms. Patricia L. Lebar	Gerald W. Rogers Trust
Bruce W. Foudree and Suzanne Reade	Mrs. Lauren Lein Cavanaugh	Ms. Roberta Rosell
Mr. James Freihaut	Dr. Judith Lichtenstein	Mr. and Mrs. Gary M. Ross
Mrs. Jo Ann Galston	Mrs. Nina Mariano	Mr. and Mrs. Irwin Ross
Ms. Anne E. Gardner	Mr. Paul Markiewicz	Ms. Elisabeth Roth^
Mrs. Kris A. Glick	Mr. and Mrs. Richard Martinez	Mr. and Mrs. Len Rubin
Ms. Patricia Golden and Mr. Steve Grunyk	Mattingly Low Vision, Inc.	Mrs. Debra Russo
Ms. Jordan T. Goodman	Mr. and Mrs. Theodore C. Mazola	Mr. and Mrs. Constantino Salios
Ms. Melanie Goodman	Mr. and Mrs. Edward McCarthy	Mr. John Salvino
Mr. Peter Granat and	Mrs. Kristina McGrath	Mr. Mark J. Schulte and Ms. Mary Holcomb
Ms. Rebecca Plotnick	McLean Foundation	Roslyn and Alan* Schwartz
Mr. and Mrs. Corey R. Harris	Mr. and Mrs. Francis Mentone	Ms. Kathy Share
Ms. Sarah Heidkamp	Microsoft Corporation	Dr. Susan and Mr. David Sherman
Ms. Maggie Hill	Mr. and Mrs. Douglas A. Milroy	Ms. Sharon J. Stanley Trust
Mr. Steven and Ms. Lisa Hilton	Mr. Michael Mondschean	Mr. Richard A. Stein
Mr. and Mrs. Richard M. Hirsch	Mr. Paul J. Much	Mr. and Mrs.~ Paul Stoeberl
Ms. Mary K. Howe~	Mr. and Mrs. Steven Napolitano	Mr. and Mrs. Dick Stoken
Mr. and Mrs. Philip Huber	Richard and Anne* Nathan	Roger and Susan Stone Family Foundation
Mr. and Mrs. Martin Hughes	Mrs. Cathy Newman	Mr. Peter Sutton
Mr. and Mrs. Greg L. Hunt	Ms. Karin Norington-Reaves^	Mr. Charles A. Tausche
	Ms. Valerie Nowak	Taxman, Pollock, Murray,
	Oracle	
	Mr. and Mrs. Brian Oriente	



& Beckerman, LLC  
Mrs. Jamie K. Thorsen  
Ms. Denise Tomasello  
Ms. Bina O. Trivedi

JCS Weil Trust  
Mr. Richard Weininger  
Dr. and Mrs. Jeffrey Weller  
Ms. Melissa Wittenberg~

Ms. Colleen Wunderlich  
Susan Young  
Mrs. Martha Younger-White~  
Mr. Michael B. Zenn

\*Deceased

^Board Member

~Staff

## In-Kind Kindness

Our in-kind partners provide silent auction items and additional support for our events.

2 Sisters  
Aba Restaurant  
Abt Electrics  
Al Menotti Couture  
Alagrettis Bakery  
Alice Benjamin Interiors  
Anne Fontaine  
Anthony Cristiano Salon  
Larry Appel  
Armani Prive  
Bake For Me  
Baked by Melissa  
Barcocina  
Bark Box  
Bartucci  
Benefit Cosmetics  
Best Defense Concepts  
Bittersweet Bakery  
Blue Plate  
Bluestone  
BMO Harris

Sherrill Bodine  
Bouquet  
Brown Sugar Bakery  
Brownie Points  
Carnivale  
Annette Cazenave  
Charles Ifergan Salon  
Chicago Bears  
Chicago Blackhawks  
Chicago Botanic Garden  
Chicago Cosmetic Surgery and Dermatology  
Chicago Fire  
Clare V.  
Cle De Peau  
Colada Shop  
Dr. Michael and Virginia Conrad  
Contessa Bottega  
Cookie Do NYC  
Cross Town Fitness  
Cuyana

Cynthia's Consignment  
Dani's Delights  
Dani's in NYC  
Destination Kohler  
DineAmic Hospitality  
Divine Biscoti  
Elite Sports Therapy & Wellness Highland Park  
Elle's Belles  
Empty Bottle  
FELT  
Field Museum  
Food For Thought  
Sandy Forsythe  
Fortune Fish & Gourmet  
Frances Heffernan  
Fumee Claire  
George the Salon  
Gibson's Steakhouse  
Glasses Ltd.  
Megan Goldish

Gotta Have S'More	Misi	Serena & Lily
Guaranteed Rate	Molly's Cupcakes	Shakou Restaurants
LeighAnn and M. Casey Herman	Shauna and Barry Montgomery	Sisley
High Touch Spa	Music Box Theatre	SNk snacks
Lisa Hilton	Music of the Baroque	Soto Sweets, LA
Home Chef	Neiman Marcus	St. John Boutique
Dave & Nancy Huber	Nomadic Ant	Sugar High
Illinois Sports Facilities Authority	Northwestern Athletics	Summer House Santa Monica
Implevents	Nothing Bundt Cakes	Sweet E's
Insomnia Cookies	Orlane	TAO Chicago
Sue and Dennis Ireland	Parachute	Target
J&L Catering	Peace, Love and Cookies	Teddie Kossof Salon & Spa
Jamie McDaniel	Pinklicious Nails	Thalia Hall
Jane Skin Care Studio	Pit & Tap	The Drake Hotel
Kenneth Fron	Pizza Friendly Pizza	The Glen Club
Knockaround Sunglasses	Jimmy Place	The Northlight Theatre
L'Occitane En Provance	Planet Paws Pet Club	The Ritz Carlton
Laudi Vidni	Poker Power	The Second City
Lauren Lein LTD	Portillo's	The X Pot Chicago
Le Colonial	PRP Wine	Topgolf
Lilia	Bob Pulford	Trish McEvoy
LondonHouse Chicago	RedE	Tufano's Vernon Park Tap
Lori's Shoes	Restore Pilates Chicago	We Take The Cake
Lou Malnati's	Carson Rhoads	Weller Dental
Lulu's Vintage	Stacy and Terri Rhoads	West Town Bakery
Lululemon Athletica	Rich Green Art & Illustrations	Wildfire
Maple & Ash Restaurant	River Valley Market	Willow Room
Marchesa	Robert Campbell Portraits	Wines for Humanity
Margaret O'Leary	Ruff Haus Pets	Wonderful Matcha
Mariano's	Peter Rusnak	
Mario's Place Barber Shop	Salon Elan	
Merz Apothecary	Sanders Fine Portraits	
Mira Couture	Scooter's Custard	

# The Chicago Lighthouse Board of Directors

## CHAIRMAN

**Robert W. Clarke**  
Principal  
The RJ Clarke Group, LLC

## VICE CHAIRMAN

**Edward C. Jepson, Jr.**  
Attorney, Employment Law  
Vedder Price (Retired)

## PRESIDENT

**Janet P. Szlyk, Ph.D.**  
President and CEO  
The Chicago Lighthouse

## TREASURER

**John Raske**  
Managing Director –  
Commercial Mid Market  
BMO Harris Bank

## ASSISTANT TREASURER

**Bruce Hague**  
President, Commercial  
Banking,  
CIBC Bank USA

## SECRETARY

**Caroline Grossinger**  
Managing Partner  
Grossprops Associates, LLC

## ASSISTANT SECRETARY

**Richard H. Schnadig**  
Attorney, Employment Law  
Vedder Price (Retired)

## IMMEDIATE PAST CHAIR

**Gary Rich**  
(Retired)

## EXECUTIVE COMMITTEE MEMBERS-AT-LARGE

**Joel Bruckman**  
Partner  
Smith Gambrell & Russell,  
LLP

**David J. Huber, CFP**  
Financial  
Advisor/Managing Director  
Savant Wealth  
Management

**Julie A. Stark**  
Owner / Managing  
Director  
The Stark Solution

## CHICAGO LIGHTHOUSE INDUSTRIES REPRESENTATIVE

**Michael F. Meehan**  
Sales, Marketing and Cost  
Containment Consultant

## DIRECTORS

**Richard R. Boykin**  
Attorney at Law  
Bridge Builders Consulting  
& Legal Services

**Thomas A. Deutsch, M.D.**  
Senior Advisor to the CEO  
Rush University System for  
Health

**Terri Engelman Rhoads**  
President  
Midwest Management  
Group

**Andre Fair**  
President  
Omar Medical Supplies,  
Inc.

**Sandra C. Forsythe**

**Megan Goldish**

**Beena Joseph**

**Marvin Lader**  
DataVantage Corporation  
(Retired)

**Thomas Livingston**  
Vice President,  
Government Affairs CSX

**Ellen Martin**

**Judy McCaskey**  
Educator and Civic  
Volunteer

**Elisabeth Roth**  
Sr. Portfolio Manager  
University of Chicago

**Nick Smith**  
Correspondent/Host  
NewsNation/WGN-T

**Jaclyn McNally**  
Partner  
Perkins Coie LLP

**Sheree Schimmer**

**Paul W. Rink**  
Attorney (Retired)

## Chicago Lighthouse Industries Board of Directors

### **CHAIRMAN**

**Michael F. Meehan**  
Sales, Marketing and  
Cost Containment  
Consultant

### **VICE CHAIRMAN**

**Don Belgrad**  
Schnadig Corporation  
(Retired)

### **PRESIDENT**

**Janet P. Szlyk, Ph.D.**  
President and CEO  
The Chicago Lighthouse

### **SECRETARY/TREASURER**

**Ted Mazola**  
New West Realty Group

### **DIRECTORS**

**Robert W. Clarke**  
Principal  
The RJ Clarke Group, LLC

**Peter Miller**  
Founder and President  
Security Systems, Inc.

**Gary Rich**  
(Retired)

**Ted Wecker**  
CEO  
Skyline Furniture



# Auxiliary Boards

## ASSOCIATE BOARD

### **President**

Sally Schwartz

### **Executive Committee**

Haley Baer

Gail Boorstein

Allie Davidson

Lindsey Dextl

Jo Ann Galston

Courtney Golding

Terri Gordon

Gayle Harris

Amy Hausman

Jaclyn Joseph

Julie Kraff

Cheryl Kraff-Cooper, M.D.

Debi Learner

Pamela Leslie

Carly Linton

Nina Mann

Penny Meyers

Sheila Moss

Joani Oslan

Fran Pine

Ilene Shaw

Alison Stolberg

Kim Strauss

Dana Weiss

Jamie Zaransky

## JUNIOR BOARD

### **Co-Chairs**

Joel Bruckman

Megan Goldish

### **Vice Chair of Membership**

Adam Sheppard

### **Event Co-Chairs**

Jamie Dickler

Kim Pressling

## LIONS STRICKFADEN

## ADVISORY COMMITTEE

### **Chairman**

### **Past District Governor**

Lion John Coleman

### **Members**

Past Int'l Director Lion &

PDG Lion Dan O'Reilly

PDG PCC Lion Steve Anton

PDG Lion Howard Swacker

### **Governor**

Lion Tony Zartler

## PRESIDENT'S ADVISORY COUNCIL

Steve Adelman, Chair

Judge Keith Brown

Dr. Paul Chan

Allyson Hansen

Candace Jordan

Julie Pesch

Laurie Randolph

Dr. Thasarat Vajaranant

## Board of Directors Members Emeriti

### **President**

### **Emeritus/Director Emeritus**

James M. Kesteloot

### **Directors Emeritus**

Frank Chanen

Anida Johnson “Cookie”  
Cohen

John Coleman

Bruce Foudree

H. Dennis Giertz

Joel A. Kaplan, M.D.

Manus Kraff, M.D.

Daniel G. Lee

Linda Manning

Judge Nicholas T. Pomaro

Edward Schwartz

## In Memoriam

The Chicago Lighthouse was saddened by the recent passing of these friends and supporters. We are grateful for their commitment to our important mission during their lifetimes. Their kindness will be remembered through our good works today and for years to come.

Mr. Sanford A. Bank	Dr. Stephen M. Harrison	Mr. Steven B. Ross
Mr. Daniel Benninghoven	Mrs. Diane Heller	Ms. Christine Samaan
Ms. Davita Bloom	Mr. Howard J. Huber	Mr. Nolan Schloemer
Ms. Emily J. Brockman	Mr. Ron Katz	Dr. Susan Sicotte
Ms. Mary Buxton	Mr. Carl Konrath	Mr. Lowell I. Stahl
Ms. Terry J. Caldron	Mr. Sigmund Lefkovitz	Ms. Phyllis R. Statham
Mr. John Cardiello	Mr. Craig Lynch	Mrs. JoAnne Steinback
Dr. Roy W. Carlson	Mrs. Peg Maher	Mr. Roger W. Stone
Ms. Nancy Cavey	Mr. Frank Mareska	Mr. Kevin Sullivan
Ms. Margaret Cooney	Ms. Letizia Moriarty	Mr. Neal Thayer
Ms. Sally G. Crooker	Mrs. Diana Nawrocki	Ms. Virginia Townsend
Mrs. Jeanne I. Dohnalek	Mr. Robert Pascal	Ms. Carol M. Welc
Ms. Annette Feldman	Mr. William G. Paullin	Ms. Lillian Yannell
Ms. Loraine Field	Mr. William Perlman	Mrs. Margaret V. Zelisko
Mr. Richard A. Forsythe	Mrs. Vonita Reescer	
Mr. David F. Haile	Ms. Lauren Ross	

**All lists are reflective of the time of publication.**

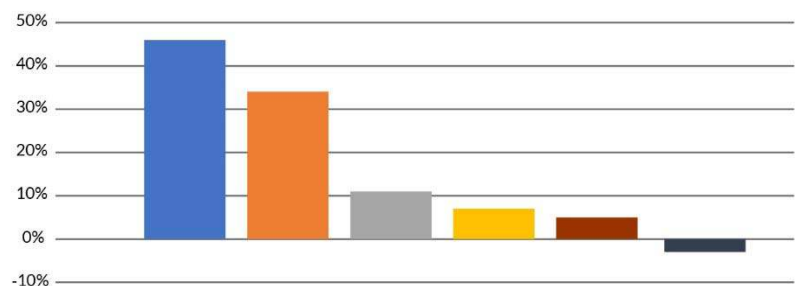
# 2021 - 2022 Consolidated Financial Summary and Comparison

## Statements of Financial Position as of June 30

ASSETS		
	2021	2022
Cash	\$6,274,970	\$2,328,066
Receivables, Net	7,070,009	13,270,122
Inventories	610,565	799,672
Investments	14,578,750	16,368,684
Beneficial Interest in Perpetual Trusts	708,293	566,814
Prepaid Expenses	369,258	157,653
Land, Building and Equipment, Net	9,644,798	9,216,060
<b>Total Assets</b>	<b>\$39,256,643</b>	<b>\$42,707,071</b>

LIABILITIES AND NET ASSETS		
	2021	2022
Liabilities	\$12,332,072	\$7,044,042
Net Assets		
Unrestricted	8,916,220	7,246,588
Unrestricted, Board Designated	12,510,922	12,990,111
Temporarily Restricted	3,382,410	13,311,312
Permanently Restricted	2,115,018	2,115,018
Subtotal Net Assets	\$26,924,571	\$35,663,029
<b>Total Liabilities and Net Assets</b>	<b>\$39,256,643</b>	<b>\$42,707,071</b>

- Social enterprise 46%
- Contributions/Events 34%
- Program Service Revenues 11%
- Industries & Service Grants 7%
- Govt. Grants & Fees 5%
- Investment Revenues -3%





## Statements of Activities

Period ended June 30

REVENUES		
	2021	2022
Contributions & Bequests	\$5,777,340	\$18,031,466
Lighthouse Industries Sales	3,802,526	3,805,923
Call Centers/Service Contracts	31,264,860	24,436,521
Program Revenues	6,204,301	8,291,973
Investment Income	280,868	-
Miscellaneous	-	126,166
Change in Value of Split-Interest Agreements	132,256	(154,916)
Net Realized Gain/(Loss) on Investments	367,022	(1,977,796)
Net Change in Unrealized Appreciation of Long Term Investments	1,272,552	329,536
<b>Total Revenues</b>	<b>\$49,101,725</b>	<b>\$52,888,873</b>

EXPENSES		
Program Services	\$35,173,943	\$36,209,553
Management & General	6,176,690	6,369,563
Fundraising	1,290,835	981,880
Public Relations	300,337	589,419
<b>Total Expenses</b>	<b>\$42,941,805</b>	<b>\$44,150,415</b>

CHANGE IN NET ASSETS	\$6,159,920	\$8,738,458
Net Assets at Beginning of Year	\$20,764,652	\$26,924,572
Net Assets at End of Year	\$26,924,572	\$35,663,030

# The Chicago Socialight

See and be seen at one of The Chicago Lighthouse's unique and engaging events. Whether it's a poker and casino night, a fashion show, or an evening of decadent desserts, there's always something happening in support of our mission.

Be part of the fun! See our upcoming events at: [chicagolighthouse.org/events](http://chicagolighthouse.org/events)







1. The Sweetest Night of the Year! Our Junior Board celebrated a great Sweets for Sight event, in support of Lighthouse Children's and Youth Programs, which they hosted at the lively Carnivale restaurant.
2. Champions for the blind and visually impaired community. Sandy and, the late, Rick Forsythe were honored as our Beacon of Light Awardees at a special dinner last Spring.
3. Our Lader Family Scholarship awards celebration honored 18 students who are blind, visually impaired or disabled. With The Lighthouse's support, they are realizing their educational dreams.
4. Our Associate Board's 36th Annual House & Garden Walk featured gorgeous homes from across the country.
5. As part of our First Jobs Program, blind and visually impaired youth showcased their work at the Photography for All exhibit held at The Chicago Center for Arts and Technology.
6. Vice President of Entrepreneurial Programs, Colleen Wunderlich, escorted by Paul Iacono, walked the FLAIR runway with her guide dog, Nora.
7. Highlight from FLAIR 2022 featuring (L to R) co-host, Candace Jordan, Honoree Sherry Lea Holson, and co-chairs, Sherrill Bodine and Sheree Schimmer.
8. Guests celebrate a great craps roll at our Raising the Stakes for Vision: Poker & Casino Night.
9. Light of the Night Honorees, Carol & Marv Lader pose with Board Member Caroline Grossinger (L) and President & CEO Janet Szlyk, Ph.D. (R) at the Seeing What's Possible Gala.



## Providing Pathways to Independence

### OUR MISSION

The Chicago Lighthouse is a not-for-profit agency committed to providing the highest quality educational, clinical, vocational and rehabilitation services for children, youth and adults who are blind or visually impaired, including deaf-blind and multi-disabled. The Chicago Lighthouse opens

doors to opportunities, choice, jobs and independence for people of all ages who are blind or visually impaired, and in furtherance of this objective, assists and employs people who are otherwise disabled and Veterans.



For 40 years, our Mission Statement has served as The Chicago Lighthouse's North Star, providing direction for our programs and services as we have grown.

Long-term relevance was the goal, recalls Rick Berlet, who led a group of employees and supporters in developing the Mission Statement in the 1980s. "That's what a Mission Statement is supposed to be," he says. "If you're changing it often, you probably haven't done a good job of creating it in the first place."

As they crafted the Mission Statement over several drafts, the team kept coming back to The Lighthouse's commitment to providing pathways to independence for its clients. "That spirit has shaped The Lighthouse ever since," says Berlet, who is now retired in North Carolina. "Every time I come back, I'm pumped up to see how it has been applied to the times."



1850 West Roosevelt Road, Chicago, IL 60608 | Tel (312) 666-1331

222 Waukegan Road, Glenview, IL 60025 | Tel (847) 510-6200

[www.chicagolighthouse.org](http://www.chicagolighthouse.org)