



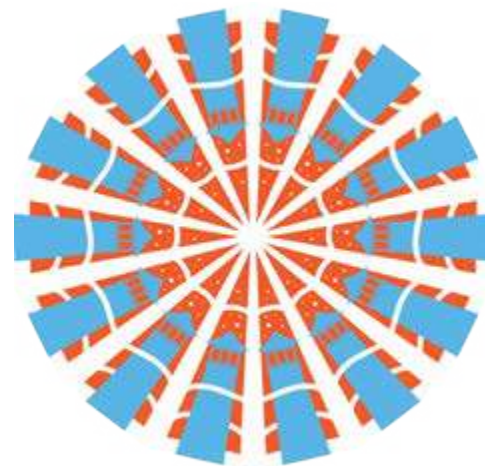
A KALEIDOSCOPE  
OF SOCIAL IMPACT



The Chicago  
Lighthouse

2021 ANNUAL REPORT





## A REFLECTION OF BEAUTIFUL FORMS

*Taking its name from the Greek word for “Observer of Beautiful Forms,” a Kaleidoscope uses reflection and motion to shift individual pieces into symmetrical patterns and changing views. Like those optical instruments, The Chicago Lighthouse’s 40 programs and services are continually moving pieces of a whole that reflect upon each other to create images of symmetrical beauty. The pieces may move and shift, and the views may change, but the beauty remains in the form of our everlasting “Community of Care.”*

## DEAR FRIENDS,

An annual report is more than simply a summary of accomplishments from the previous year. It is a reflection of how our many programs and services have combined to create something more impactful than the individual parts could ever accomplish on their own.

For 116 years, our programs have reflected the light of our community, illuminating the boundless potential of each individual we serve and collectively working together to improve the lives of individuals who are blind, visually impaired, disabled and Veterans everywhere. Our longevity and success are a result of the perpetual motion of innovation as we work to address our community’s constantly evolving needs.

In the following pages, you will read stories about how our programs create and reflect our vision of access and inclusion, working together to create a **Kaleidoscope of Social Impact**. From our Digital Accessible Experience experts, all of whom are blind, working with companies to optimize software for people with visual impairments to a weekly disability news radio segment, our work celebrates the potential of every individual and illustrates how those individuals, working together, create an ever-changing mosaic of beauty through purpose.

Our Kaleidoscope of Social Impact would be nothing without the individual pieces within it. Our clients, staff, volunteers, and supporters are the elements that, when reflected upon each other, create the beautiful form that is The Chicago Lighthouse.

Thank you all for being part of—and reflecting—our light.



Robert W. Clarke  
Chair, Board of Directors

Janet P. Szlyk, Ph.D.  
President and Chief Executive Officer



The Chicago  
Lighthouse

## A KALEIDOSCOPE OF SOCIAL IMPACT

**EDITORIAL CONCEPT** Janet P. Szlyk, Ph.D.

**WRITERS** Aaron Baar; Jessica Grant;  
Sandy Murillo

**CONTRIBUTORS** Alisa Brill; David DeBoer;  
Lindsay Inglis; Jennifer Miller, J.D.

### EDITORIAL BOARD

Aaron Baar; Angela D'Antonio; Jessica  
Grant; D. Todd Gray; Jennifer Miller, J.D.;  
Melissa Wittenberg

**DESIGN** Lisa Birmingham

**PHOTOGRAPHY** Maria Baker; Lisa  
Birmingham; Jessica Grant; Vincent  
Johnson; John Reilly; Mila Samokhina

For large print or Braille versions of the  
Annual Report, call: (312) 666-1331  
ext. 3358, or email:  
publications@chicagolighthouse.org

## CONTENTS

### Creating Opportunities

Our Digital Accessible Experience (DAX) Team, led by IT professionals who are blind, helped to create new career opportunities for people with disabilities.



### FEATURES

- P1 The Disability Minute
- P3 Creating Opportunities
- P5 All in the Family
- P7 Building the Future Together
- P9 Pioneering the Future
- P11 A Kaleidoscope of Social Impact

### DEPARTMENTS

- P13 Planned Giving
- P14 Lifetime Donors
- P15 Hamill Society Gifts
- P18 In-Kind Kindness
- P19 Lighthouse Keepers
- P21 Board Listings
- P23 Financial Statements
- P25 Chicago SocialLight



### Building the Future, Together

In Spring of 2022, we will break ground on "The Foglia Residences," which will provide fully accessible, affordable housing for people with disabilities and Veterans.



### Pioneering the Future

Our new Diabetes Prevention Program is helping our community to develop healthy lifestyle changes and prevent diabetic eye disease, the leading cause of blindness in the United States.



# REFLECTING OUR COMMUNITY'S PRIORITIES: "THE DISABILITY MINUTE"

By Sandy Murillo | Associate Producer, Chicago Lighthouse Media



I have always been interested in the media representation, or lack thereof, of people with disabilities. That is one of the reasons I became a radio producer at The Chicago Lighthouse. More than 61 million Americans (25% of the total population) identify as having a disability, but too often our stories are portrayed as either tragic or tearjerkingly inspirational. I want them to be accurate and informative.

Since 1906, The Lighthouse has advocated for inclusion and accessibility for all. This year, we added a huge megaphone to those efforts thanks to a partnership with WBBM Newsradio, the top-rated news station in Chicago. "The Disability Minute," produced in The Chicago Lighthouse's fully-accessible studio by people who are blind, fills a void that has been severely lacking in our media landscape.

Our segments have covered everything from the inclusion of people with sensory processing disorders to accessibility services at Chicago's many music festivals. When Gov. J.B. Pritzker issued an executive order barring the State of Illinois from doing business

with companies that pay people with disabilities less than the minimum wage, we were the only media outlet granted an interview to explain why the order was both good policy and good business.

I, along with my colleagues Ben, Kalari, and Maureen, do not take this opportunity for granted. Our work researching, writing, and producing these weekly segments not only demonstrates that we are competent and capable, it provides a vital service for our community. By highlighting the information and resources available for people with disabilities, we are fulfilling a need for a population that is all too often overlooked, and we are making our presence known.

Journalism is the practice of telling stories in service of creating social change. It is a chance to illuminate different perspectives. Thanks to "The Disability Minute," **We have been exposed to thought-provoking points of view that we would not have otherwise encountered. We are learning new digital media production and storytelling techniques, and we are telling stories that will lead to greater understanding and empathy for all people with disabilities. We cannot think of a better way to serve our community.**



"The Disability Minute" production team: (l. to r.) Ben Chagot, Sandy Murillo, Kalari Girtley-Jackson and Maureen Reid are pictured in the Chicago Lighthouse Media studio, along with Ben's guide dog, Sammie, and Maureen's guide dog, Gaston.





# Creating Opportunities

Lighthouse's DAX Team and UI Health Open Doors for People with Disabilities

In 2018, the University of Illinois Hospital and Health & Health Sciences System opted to adopt Epic to handle its scheduling services. The switch would provide better communication and access among UI Health's various medical departments, saving countless hours for both patients and staff. There was only one small issue: the software was not fully accessible across its scheduling workflow for users who were blind or visually impaired.

As a longtime client and partner of The Chicago Lighthouse's social enterprise call centers, full accessibility for users who are

blind was critical to UI Health. "This is a partnership," says Kay Soto, retired Director of UI Health Call Centers who helped to set up the call centers at The Lighthouse. "We have something special here."

The solution came in the form of another Lighthouse offering, the Digital Accessible Experience consultancy (DAX). Launched in 2019, DAX employs accessibility-certified IT professionals, who are blind, to help companies and other organizations ensure their digital interfaces are optimized for people with visual impairments.

For DAX, accessibility works best when it is incorporated in the design stage (rather



than laid on as retrofitted patches). The DAX team worked side-by-side with Epic software developers and implementers shadowing call center employees to determine how to optimize the product's workflows for The Lighthouse's employees with visual impairments. Among the changes were adding headings to fields for clearer navigation, integrating keyboard shortcuts, and removing unnecessary menu items.

After extensive testing by DAX and other Lighthouse staff members, Epic's accessible-optimized software launched last year, immediately opening up opportunities for people who are blind or visually impaired. Since its launch with UI Health, employees with visual impairments have scheduled more than 2,000 appointments, and 30 call center employees have been promoted to "Medical Scheduler."

DAX's work with UI Health and Epic, which will open up opportunities for people with



EVERY TIME A COLLEAGUE CHANGES THEIR TITLE TO 'MEDICAL SCHEDULER,' IT MAKES MY DAY. WE MADE THAT HAPPEN!

—JOSE MARTINEZ | DAX LEAD ANALYST

visual impairments around the world, demonstrates how The Lighthouse's programs work together to improve the lives of everyone involved. "Our call center agents now have workstations that grant them equal access as their sighted peers," says DAX Lead Analyst Jose Martinez. "Every time a colleague changes their title to 'Medical Scheduler,' it makes my day. We made that happen!"



**OPPOSITE:** Digital Accessible Experience (DAX) consultants: (l. to r.) Giovanni Bahena, Jose Martinez and Juan Gonzalez. **LEFT:** Thanks to the work of our DAX team to optimize the Epic software for users who are blind or visually impaired, Kendra White was promoted to Accessibility Support Specialist (pictured with her supervisor, Chenita Jackson). **RIGHT:** Ben Chargot (left, seated) recently transitioned from Medical Scheduler to DAX Project Coordinator, where he supports Phil Yatvin (right, seated), Senior Director, Chicago Lighthouse Industries, and the rest of the team in developing and maintaining partnerships.



# ALL IN THE Family

Helping People with Vision Care Across Generations



**THE DEUTSCH FAMILY**—Though his father and grandfather were both ophthalmologists, Dr. Thomas Deutsch says he never felt any pressure to become one himself. Nonetheless, he saw the advantages. “I came home and had dinner every night with someone who clearly loved what he did,” Tom says.

**ABOVE:** Four Generations of Ophthalmologists: (l. to r.) Dr. Emil Deutsch (circa 1922), Dr. William Deutsch, Dr. Thomas Deutsch, and Dr. Rebecca Deutsch Sarran.

So, when the time came for Tom to select a medical specialty, the choice was obvious. In addition to the family predisposition to the practice, ophthalmology offered opportunities to see near-immediate results of his work with patients. “I looked at all the different specialties and kept getting drawn back to ophthalmology,” he says.

A generation later, Tom’s daughter, Dr. Rebecca Deutsch Sarran, drew upon a similar sentiment when choosing her own medical specialty. “Like my dad, I had a first-hand daily view of someone who loves what he does,” she says. “And everyone is so smart and hardworking in this field.”

They are also dedicated to their communities. **When he was invited to join The Lighthouse’s Board, Tom accepted after asking for advice from his father (who had served on the boards of several organizations over his career), who said: “Whenever someone asks you to help, if you can give that help you should say yes. Then, you should be fully committed to it.”**

Rebecca one day hopes to serve on medical and charitable boards like her father and grandfather. Now is not that time, however. In addition to building her ophthalmologic career, she and her husband are the parents of a young boy, born in 2020.

Will her son represent the fifth generation of Deutsch ophthalmologists? Time will tell. “He hasn’t decided yet if he’s going to be an ophthalmologist,” Rebecca says. “It will be interesting to see what his perspective is.”

**THE KRAFF FAMILY**—With two current and two retired ophthalmologists sitting around the table, one might imagine Kraff family gatherings to be filled with debate about the latest eye-care procedures. Fortunately, that is not the case.

“We generally don’t disagree ophthalmologically, though we may disagree on other things,” says Dr. Cheryl Kraff-Cooper, who along with her brother, Dr. Colman Kraff, works at the Kraff Eye Institute in Chicago, which was founded by their father Dr. Manus Kraff. (The fourth member of the family is retina specialist Dr. Caryn Orlin Kraff, who recently retired.)

**With its combination of medical care and surgical treatment, ophthalmology is an opportunity to change peoples’ lives, Dr. Kraff-Cooper says. “Vision is so important for independence,” she says. “Helping people with limited vision see even just a little bit more has been particularly rewarding.”**

Beyond their work treating vision, the Kraffs are deeply involved in The Chicago Lighthouse. Manus sits on The Lighthouse’s Board. Cheryl has been a member of our Associate Board for more than 30 years, where she has served as president, correspondence secretary, volunteer coordinator, and chair of the Board’s House and Garden Walk several times. Colman’s wife, Julie, has also served on our Associate Board for more than 30 years.

The Kraff’s connection to The Lighthouse is now extending into the third generation, as Dr. Kraff-Cooper’s daughter, Allie Davidson, has been a member of the Associate Board for the past several years. Though she is not an ophthalmologist like her mother, uncle, aunt and grandfather (she is a reading specialist), Allie’s exposure to the issues surrounding low vision made the board a natural fit.

“Growing up around so many eye-care professionals, I know how important vision care is,” Allie says. “I’m thrilled to continue upholding our family legacy with The Lighthouse.”



The family behind the Kraff Eye Institute: **FRONT:** Dr. Caryn Orlin-Kraff (retired), Dr. Cheryl Kraff-Cooper. **BACK ROW:** Dr. William Lissner (retired), Dr. Manus Kraff (retired), Dr. Colman Kraff.







**LEFT:** Vince Foglia. **ABOVE:** A rendering of “The Foglia Residences,” which will offer accessible and affordable apartments for people with disabilities and Veterans.



## Building the Future, TOGETHER

Donor Support Provides  
Momentum for Future Projects

**THE FOGLIAS**—In addition to our invaluable staff, volunteers, and clients, our work is not possible without our fantastic donors and supporters. In 2021, two generous families made significant contributions to further help people to live independently and with confidence.

**In spring of 2022, we will break ground on a building that will include 76 fully accessible, affordable apartments for people with disabilities and Veterans. “The Foglia Residences” will be named in honor of Lighthouse supporters,**

**Vince Foglia, his wife, Pat, and their family.** As the founder of a medical device manufacturing company, Vince previously spent a great deal of time in the Illinois Medical District. They are also the parents of a son who is visually impaired. This and more inspired the Foglias to make an extremely generous gift to help support the new residences. We thus named the new residences in the Foglia family’s honor.

**“It is my pleasure to partner with The Lighthouse to create new opportunities**

**for independence for people with disabilities and Veterans,” Vince says. “I can’t wait to see these new apartments and how accessible they will be. I am honored that this amazing initiative will have our family’s name on it!”**

**THE HUBERS**—Longtime Board Member and donor David Huber also has a deep connection to The Lighthouse’s mission, as he experienced vision loss due to a detached retina. His empathy with the visually impaired community inspires his involvement with our organization.

As a testament to David’s dedication to advancing our work, he and his wife, Nancy, made a fantastic gift to our Glenview facility, Chicago Lighthouse North (located at 222 Waukegan Road). **Lighthouse North will now be named “The Chicago Lighthouse Huber Vision Rehabilitation Center” in his and his family’s honor.**

For David, this wonderful gift is his way to help countless people receive the low



**I KNOW FIRST HAND WHAT PEOPLE WITH DISABILITIES CAN ACHIEVE, IF GIVEN THE RESOURCES AND OPPORTUNITIES TO DO SO.**

—DAVID HUBER

vision care and rehabilitation they need to maximize their remaining vision and live independently. “As someone who is visually impaired and was still able to establish his own business, I know first hand what people with disabilities can achieve, if given the resources and opportunities to do so,” he states proudly.

***Thank you to the Foglia family and to David and Nancy Huber! We are grateful for your incredible partnership and support.***



Board Member David Huber and his wife, Nancy, address the audience at our 2021 Seeing What’s Possible Gala after being honored with our “Beacon of Light” Award.



# PIONEERING THE FUTURE

Groundbreaking  
Programming Offers  
New Perspective of Vision Care

Our approach to low vision care has always been all-encompassing, helping patients to maximize their vision and succeed in all areas of life. As we continue to respond to the evolving needs of our community, we are focusing on addressing the causes of vision loss and empowering patients to play a more active role in their care.

Diabetic eye disease is the leading cause of blindness in the United States. According to a study performed by UI Health, the diabetes rate is as high as 37% in some Chicago neighborhoods, particularly those surrounding The Lighthouse. To help close the gap in access to preventative care, **our Research Team has partnered with Chicago Cares to Prevent Diabetes to administer a free, CDC-certified program teaching people who are at-risk of type 2 diabetes to develop healthy lifestyle changes.**

**I TOOK THIS OPPORTUNITY  
AS A WAY TO GAIN MORE  
ACCOUNTABILITY FOR MY  
HEALTH.**

— NATASHA | PROGRAM PARTICIPANT

Participants of the program meet virtually as a group on a weekly basis with a trained lifestyle coach to discuss goals and strategies for weight loss and physical fitness. “By learning how to live a healthier lifestyle, they’re avoiding not just the onset of diabetes, but the complications that go along with it, including vision loss,” says Dr. Patricia Grant, Vice President of Research and Program Lead.

Dr. Kara Crumbliss, Optometrist and Senior Vice President of Clinical Services, and Dr. Patricia Grant, Vice President of Research, are pictured in our Low Vision Clinic.

“I took this opportunity as a way to gain more accountability for my health,” says program participant Natasha. “It’s been great to learn about healthy eating and exercising.”

A key element of the program’s success is the support that participants receive from one another. “If you’re experiencing a problem or feel like you’ve had a setback in your progress, you have a community of people working with you to find solutions and helping you accomplish your goals,” says Dr. Grant.

**To further help our community prevent diabetes-related eye disease, we recently launched a Diabetic Teleretinopathy Screening Program, providing free eye screenings.** Data suggests that only half of diabetics are receiving routine eye care. The program is helping us to reduce rates of blindness in the city as we can detect eye diseases early, when treatment options are still available.

**Another way our low vision research team is helping to enhance care is by contributing to the research and develop-**

**ment of a telehealth platform called the Digital Vision Clinic by IrisVision Global.** The Digital Vision Clinic may allow vision care providers to measure a patient’s visual acuity, visual field, and contrast sensitivity remotely on their newly released device, Inspire. Patients can also use the device to connect to their providers on a web-based portal for telehealth visits. “Through this technology, we may be able to track vision daily and learn about patterns of visual fluctuation and changes in visual function,” says Dr. Kara Crumbliss, Senior Vice President of Clinical Services.

The device may break barriers to care, such as transportation, by allowing doctors to test and monitor vision while patients are at home. The device may also allow for “improved exam efficiency for in-person appointments by allowing patients to self-administer some vision tests while waiting to see their doctor,” says Dr. Crumbliss. Drs. Grant and Crumbliss look forward to the many possibilities this technology may provide to improve the efficiency, convenience and quality of our care.



Natasha, a participant of our new Diabetes Prevention Program, credits the program for helping her make healthier choices.



The Digital Vision Clinic by IrisVision Global may allow vision care providers to administer vision tests remotely to patients through a wearable device.





## The 'Beautiful Form' of Opportunity for All

**RESEARCH:** The Chicago Lighthouse is serving as the evaluation center for a clinical trial of an Intracortical Visual Prosthesis (ICVP). The ICVP is a group of wireless implants designed by researchers at the Illinois Institute of Technology that may restore some light perception to people who are blind.

**INDEPENDENT LIVING:** Participants in our Adult Living Skills Program were thrilled to return to The Lighthouse after nearly 18 months away due to the COVID-19 pandemic. Our Program is the only service in Illinois that helps adults with intellectual disabilities who also have visual impairments learn life skills and develop a peer network.

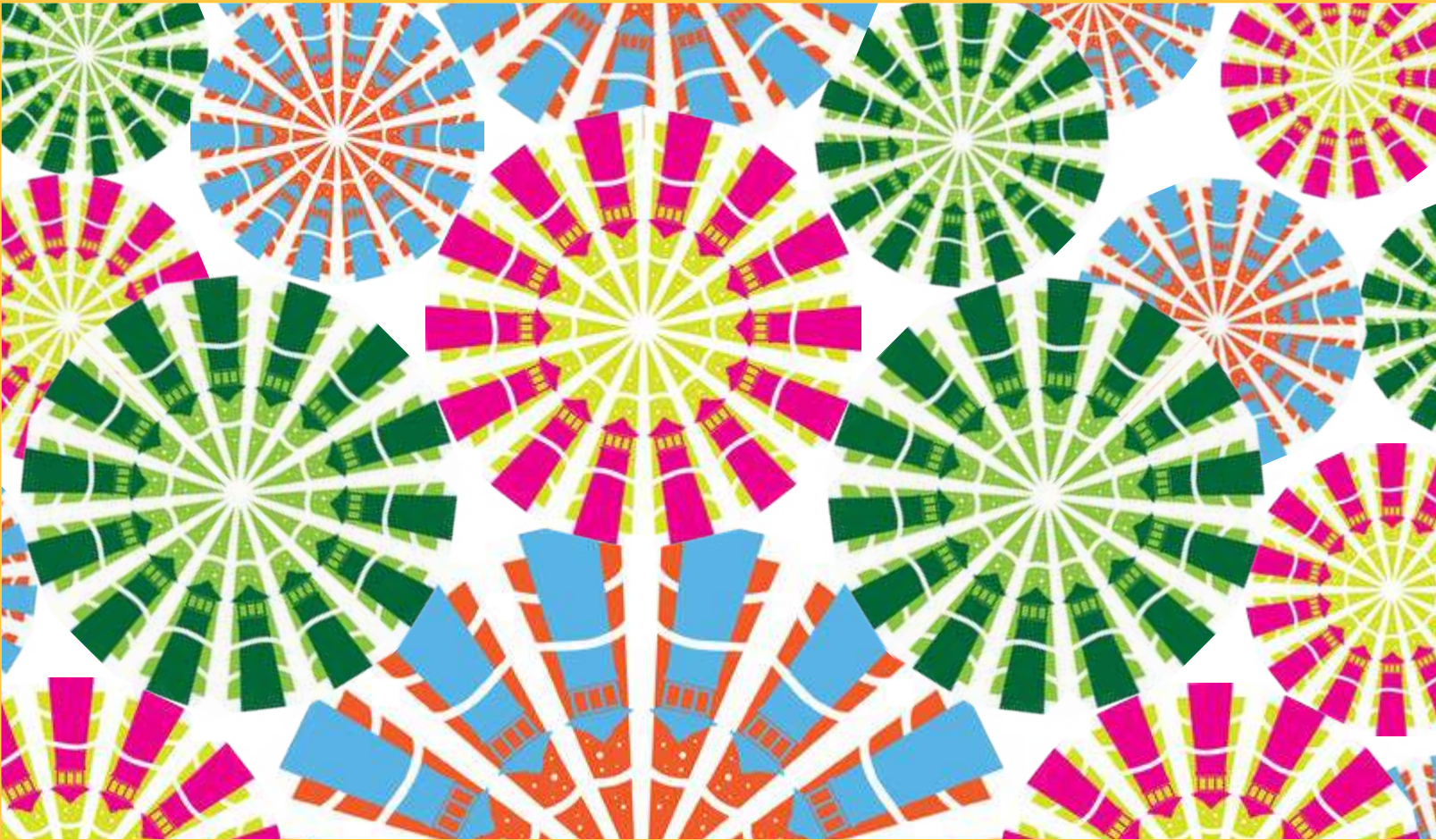
**REHABILITATION:** Our Forsythe Center for Comprehensive Vision Care helps people understand their diagnoses and treatment, maximize their remaining vision, and learn to live independently through Assistive Technology and other accommodations. More than 3,700 patients visited our Low Vision Clinics and ancillary services in FY21.

**EMPLOYMENT:** The Chicago Lighthouse has been empowering people through employment since 1922. Our Job Counselors placed approximately 425 people, including individuals with disabilities and Veterans, in jobs last year. In addition, they provided more than 250 people with workplace development training, including instructing people with disabilities about using assistive technology in the workplace, resume crafting, and participating in mock interviews.

**EDUCATION:** In addition to becoming kindergarten-ready, every student in our Judy and Ray McCaskey Preschool learns how to read Braille, as well as the importance of empathy. Our students and teachers were thrilled to return to the classroom in FY21 to share story time and other lessons in-person.

**SOCIAL ENTERPRISE:** Thanks to work completed by The Lighthouse's Digital Accessible Experience (DAX) consultants, Kendra (pictured) is now training others to schedule appointments using Epic, the world's most widely-used and comprehensive health records software. As a result of our partnership with UI Health, DAX consultants—all of whom are blind—worked side-by-side with Epic programmers to ensure the platform was optimized for users with all types of visual impairments.





PLANNED GIVING



**MILTON J. SAMUELSON SOCIETY MEMBERS**  
*Friends who have remembered The Chicago Lighthouse in their wills or estate plans or who have made another type of planned gift.*

Anonymous (80)  
Steven and Pamela Adelman  
Rick and Patricia Berlet  
Dominic Calabrese  
John Cardiello  
Franklin and Doralu Chanen  
Helen Collins  
Sandi Dorst  
Susan and Noel Elfant  
Melvin B. Franklin  
Andrzej and Marian Gerlach  
Richard Greenberger  
Bruce and Jamie Hague  
Sandra Horwitz

Lorraine Jacobsen  
Ed Jepson and Dr. Susan Sicotte  
Lillian Joerger  
Dr. Joel and Roberta Kaplan  
James and Barbara Kesteloot  
Lois Kline  
Carl and Margarete Konrath  
Davida Levy  
Cathy Lindfors  
Lee H. Martin  
Judy and Ray McCaskey  
Jennifer and Steve Miller  
John and Winifred Morris  
Donald G. Morrow

William Paullin  
Jeanette Peter  
Kathleen Peter  
Patricia Rees and  
Patrick Romanchek, Sr.  
Paul W. Rink  
Leonard Rodriquez  
Ramona C. Samuelson  
Arturo and Janette Saenz  
Richard and Patricia Schnadig  
Ann Scher  
Drs. Janet P. Szlyk and Jeffrey Jackson  
Lila Tankus

*For information about making a planned gift to The Chicago Lighthouse, please contact Todd Gray, Chief Advancement Officer, at (312) 997-3664 or email [todd.gray@chicagolighthouse.org](mailto:todd.gray@chicagolighthouse.org). If you have remembered us in your will or estate plan, please let us know so that we may properly honor you!*

LIFETIME DONORS

**\$1,000,000+**  
Anonymous  
The Chicago Community Trust  
The Chicago Lighthouse Associate Board  
Mr. and Mrs. Charles L. Barancik\*  
The Foglia Family Foundation  
Sandy and Rick Forsythe  
Julius N. Frankel Foundation  
Mr. Corwith Hamill\*  
Conrad N. Hilton Foundation  
David and Nancy Huber  
Mrs. Beatrice C. Mayer\*  
Mazza Foundation  
North Suburban Healthcare Foundation  
Polk Bros. Foundation  
Robert R. McCormick Foundation  
United Way of Metropolitan Chicago  
Wohlers Family Foundation

**\$500,000-\$999,999**  
Mrs. Lindy Bergman\*  
The Berner Charitable and Scholarship Foundation  
The Boeing Company  
Crown Family Philanthropies  
Elizabeth Z. Drew Trust  
Bruce and Jamie Hague  
Carrye & Abraham S. Hart Fund  
The Healthcare Foundation of Highland Park  
Arthur O.\* and Esther O.\* Kane  
Kresge Foundation  
Mr. and Mrs. Marvin Lader  
Mrs. Tina Lavezzorio\*  
Judy and Ray McCaskey  
Fred Mickina Estate  
Microsoft Corporation  
Irvin Newgren Trust  
Mr. and Mrs. Steven N. Pangere  
Dr. Scholl Foundation

**\$250,000-\$499,999**  
Anonymous (3)  
The Barker Welfare Foundation  
BlueCross and BlueShield of Illinois  
Larry\* and Susanne Broutman  
Fred J. Brunner Foundation  
JPMorgan Chase Foundation  
Cless Family Foundation  
Exelon Corporation  
The Foundation Fighting Blindness  
Lloyd A. Fry Foundation  
Ralph Juchcinski Trust  
Dr. and Mrs. Joel A. Kaplan

Lions Clubs International Foundation  
George Martin Sus Trust  
Arthur R. Metz Fund, Globe Foundation  
Ann and Walter\* Nathan  
Edmond and Alice Opler Foundation  
PERT Foundation  
The Retirement Research Foundation  
Anita Swanstrom Trust  
Dollie Swarts Memorial Trust

**\$100,000-\$249,999**  
Anonymous (4)  
Lester and Edward Anixter Foundation  
Assurance Agency, Ltd.  
Mr. Bernard J. Beazley\*  
Chester Bialczak Trust  
The Blowitz-Ridgeway Foundation  
BMO Harris Bank  
William\* and Rita\* Bold  
BP Amoco, PLC  
Helen Brach Foundation  
Bridgeview Bank Group  
Mr. and Mrs. Franklin A. Chanen  
CIBC Bank  
Mr. Robert W. Clarke  
Mrs. Rosanne Cohen  
Lions John and Pat Coleman  
CompTIA Educational Foundation  
CSX Corporation  
The Patrick and Anna M. Cudahy Fund  
Dr. and Mrs. Thomas A. Deutsch  
Ernst & Young LLP  
Henry Erskine, Jr. Marital and Family Trust  
The Field Foundation of Illinois  
First Nonprofit Foundation  
Robert W. Galvin Foundation  
Mrs. Mary B. Galvin  
The John S. and Christine S. Gates Charitable Trust  
Mr. H. Dennis Giertz  
Max Goldenberg Foundation  
Goldman Sachs & Company  
The Robert J. Gunterberg Charitable Foundation  
The Leo S. Guthman Fund  
Hamill Family Foundation  
The Irving Harris Foundation  
Frederick E. & Ida H. Hummel Foundation  
Evelyn L. Kilker Trust  
Marjorie Klecar Trust  
Mr. and Mrs. Carl Konrath

Dr. Manus C. Kraff  
Mr. Donald W. Krumrey\*  
Ms. Shirley Langridge\*  
Mrs. Mary E. Liebman\*  
Elick and Charlotte Lindon Charitable Trust  
Lions of Illinois Foundation  
Irma Lobe Trust  
Locke Lord LLP  
McDonald's Corporation  
Michael Reese Health Trust  
The Elizabeth Morse Charitable Trust  
Elizabeth Morse Genius Charitable Trust  
The Northern Trust Company  
Northern Trust Foundation  
The Reader's Digest Partners for Sight Foundation  
Michelle and Gary Rich  
Ronald McDonald House Charities, Chicagoland & NW Indiana  
Carl H. Sandin Trust  
Mr. and Mrs. Richard H. Schnadig  
The Siragusa Family Foundation  
Mr. Milan Sluka\*  
SmithBarney Citigroup, Inc.  
Special Kids Foundation  
The Edward S. Sprague Foundation  
Mr. and Mrs. James Steinback  
Roger\* and Susan Stone  
Drs. Janet P. Szlyk and Jeffrey M. Jackson  
Target Corporation  
Topfer Family Foundation  
William Keith Turner Trust  
Abbie E. Tyrrell Fund  
Mrs. Lois Unell  
Union Pacific Foundation  
Mr. Theodore M. Utchen\*  
Wilczynski Trust  
Richard H.\* and Diane\* Wille  
William Blair & Company Foundation  
Ethel Wiseman Trust  
George H. Zendt Charitable Trust

*\* Deceased*



# THE CORWITH HAMILL SOCIETY

The Corwith Hamill Society honors and recognizes our long-term donors. Gold is for 20 or more years of continuous giving; silver is for 15 and bronze is for 10.

**GOLD LEVEL**  
(20+ YEARS OF CONTINUOUS GIVING)

Anonymous (4)  
Mr. and Mrs. Steven H. Adelman  
Mr. Joseph B. Annenberg  
Dr. and Mrs. Alan J. Axelrod  
Mrs. Haley L. Baer  
Ms. Sarah J. Baker  
The Barker Welfare Foundation  
Mrs. Lynn Barnett  
Mr. and Mrs. Kenneth Bauske  
Mr. Thomas R. Bell  
Mrs. Rita B. Benesch  
Mr. and Mrs. Mark H. Berens  
Mrs. Susan Berk  
Mr. and Mrs. Rick Berlet  
The Berner Charitable and  
Scholarship Foundation  
Mrs. Violet Berta  
Mr. and Mrs. Jerzy Blazejewski  
Mrs. Jill Bleiman  
The Boeing Company  
Mr. and Mrs. Abraham Bohrer  
Mr. and Mrs. Albert H. Bolger  
Mr. and Mrs. Howard J. Bolotin  
Mrs. Gail B. Boorstein  
Mr. Norman A. Brabec  
Ms. Nena Bradshaw  
Mrs. Karen A. Brenner  
Miss Judith C. Brinkman  
Fred J. Brunner Foundation  
Mr. John C. Buddig  
Mr. and Mrs. William R. Buecking  
Mrs. Nancy Burstyn  
Mr. and Mrs. Arthur Callistein  
Central Lions Club of Chicago  
Central Steel & Wire Company  
Mr. and Mrs. Franklin A. Chanen  
Mr. John D. Chaney  
Mrs. Burnetta Cloos  
Ms. Debra L. Cohen  
Mrs. Lynn Cohen  
Mrs. Rosanne Cohen  
Mr. James Coleman  
Mrs. Jane B. Colman  
Mrs. Elizabeth E. Copeland  
Mrs. Marian M. Costello  
Mrs. Muriel L. Cowen  
Mr. Joseph J. Crickard  
Ms. Michelina D'Agostino  
Dr. and Mrs. Thomas A. Deutsch  
Mrs. Patricia A. DeWolf  
Mr. Vincent Dina  
Mr. Leo J. Domzalski  
Mr. Tom Donegan  
Mr. and Mrs. Denis Dywan  
Mr. and Mrs. Keith Edmonson  
Mr. and Mrs. Stephen Eich

Mr. Terry Elliott  
Ms. Lucy P. Evans  
Mr. Thomas W. Fahy  
Ms. J.A. Fellows  
Mr. Sam W. Fiarman  
Rocco Fiore & Sons Inc.  
Mr. August Fischer, Jr.  
Mrs. Ava L. Fogel  
Mr. Bruce W. Foudree and  
Ms. Suzanne Reade  
Julius N. Frankel Foundation  
Mr. and Mrs. William J. Frankel  
Ms. Isabel E. Franzen  
Mr. and Mrs. Franklin K. Fredriksen  
Mrs. Jo Ann Galston  
Mr. H. Dennis Giertz  
Mrs. Jan Gilberg  
Mr. and Mrs. Scott Gilbert  
Mrs. Kris A. Glicken  
Max Goldenberg Foundation  
Goldman Sachs & Company  
Mrs. Nancy Grayheck  
Ms. Louise E. Grieshaber  
Mr. and Mrs. Eston M. Gross  
Mr. Robert R. Gross  
Mr. Adolph J. Habich  
Hamill Family Foundation  
Mr. Richard P. Hamlin  
Mr. and Mrs. Ernst K. Heimann  
Mrs. Diane Heller  
Mr. and Mrs. Robert F. Hilliard  
Dr. and Mrs. Arnold Hirsch  
Mr. and Mrs. Richard M. Hirsch  
Mrs. Barbara R. Hollenberg  
Ms. Mary K. Howe  
Mrs. Pamela M. Hoxsey  
Ms. Helen Jahnke  
Mr. and Mrs. Jerry Januszewski  
Mrs. Judith Kahn  
Dr. and Mrs. Joel A. Kaplan  
Mr. and Mrs. Max S. Kasper  
Mrs. Jill Katlin  
Mr. and Mrs. Michael C. Keenan  
Mr. and Mrs. James M. Kesteloot  
Mrs. Heidi Kirsch  
Mr. and Mrs. Carl Konrath  
Mrs. Janice A. Korn  
Mrs. Julie D. Kraff  
Mrs. Sondra F. Kraff  
Dr. Cheryl Kraff-Cooper and  
Mr. Carey Cooper  
Ms. Irene Krolis  
Mr. Frank R. Krom  
Mr. Perry Kupietz  
Mr. and Mrs. Robert Lassen  
Mr. and Mrs. Daniel G. Lee  
Mrs. Deborah Leeb  
Mr. and Mrs. Mark H. Leeds  
Mrs. Pamela Leslie

Mr. and Mrs. Gary Levenstein  
Mrs. Cindy Levy  
Mrs. Debra F. Lewin  
Mrs. Lynne Green Lieber  
Ms. Mary Anne Limbos  
Mrs. Patricia M. Livingston  
Mrs. Jodi S. Loeb  
Mr. and Mrs. Terrence J. Longo  
Mr. and Mrs. Arthur A. Malinowski  
Mrs. Susan A. Mandell  
Mrs. Nina Mann  
Mr. and Mrs. Thomas Mazukelli  
Mr. Richard H. Medland  
Mrs. Monica Mellovitz  
Arthur R. Metz Fund, Globe Foundation  
Mrs. Sheila M. Moss  
Mrs. Shareefah Muhammad  
Mr. Marion Musacchio  
Mrs. Lynn Muslin  
Mr. and Mrs. Frederick J. Nachman  
Mr. and Mrs. William North  
Edmond and Alice Opler Foundation  
Mrs. Jaclyn Patinkin  
Mr. Murry Perkins  
Ms. Brenda R. Pessin  
Ms. Beverly V. Peters  
Mrs. Jean Petryniec  
Mrs. Karen Gutheim Pinsof  
William K. Platt, M.D.  
Ms. Blanche M. Raab  
Mrs. Susan K. Raskin  
Mr. and Mrs. Fred R. Refner  
Mr. James G. Ring  
Mr. Paul W. Rink, J. D.  
Riverside Township Lions Club  
Mr. and Mrs. Lonnie Roberts



Corwith Hamill was The Lighthouse's longest continuous donor. When he passed away in 2013 at the age of 99, he had donated to The Lighthouse for the majority of his life. In recognition of Mr. Hamill and his generosity to us, we created a society named in his memory.

Mrs. Harriett Robinson  
Mr. Leonard Rodriguez  
Mr. and Mrs. Alfred M. Rogers, Jr.  
Mrs. Eve Rooth  
Dr. and Mrs. Robert L. Rosen  
Mrs. Helga Rosenberg  
Benjamin J. Rosenthal Foundation  
Mr. and Mrs. Warner A. Rosenthal  
Mrs. Rochelle D. Rubinoff  
Mrs. Alison Salzman  
Mrs. Ramona C. Samuelson  
Mr. Paul L. Schmelzer  
Mrs. Claudia P. Schwartz  
Mr. and Mrs. Alan Schwartz  
Ms. Sally Schwartz  
Mr. and Mrs. Stephen Schwellenbach  
Mr. Warren R. Sedlacek  
Mrs. Ilene Shaw  
Mrs. Geraldine A. Siena  
The Siragusa Family Foundation  
Mr. and Mrs. Robert Smith  
Mrs. Julie L. Smith  
Ms. Thomasina Smith  
Mrs. Jean C. Sobek  
The Edward S. Sprague Foundation  
Mrs. Clara Stasior  
Mrs. Paula M. Stendel  
Ms. Susan Stern  
Ms. Eydie L. Sternberg  
Mr. and Mrs. William I. Swedler  
Mr. Charles A. Tausche  
Ms. Dorothy M. Thomas  
Mr. Edward J. Thompson  
Ms. Lois A. Tortorelli  
United Way of Metropolitan Chicago  
Mr. Dainius Valiukenas  
Mr. Ray Van Dyke  
Mr. and Mrs. Steven Walczynski  
Mrs. Lois Waller  
Mrs. Barbara Walner  
Ms. Carole A. Walsh  
Mrs. Debbie Warsh  
Mr. Edward W. Wavak  
Samuel Weinstein Family Foundation  
Mr. Robert J. Wendler  
Mrs. Gloria Wexler  
Mr. Michael P. Whelan  
Mrs. Laura P. White  
Mr. and Mrs. Howard Wolff  
Mrs. Alison Yastrow  
Mr. and Mrs. Peter Yastrow

**SILVER LEVEL**  
(15+ YEARS OF CONTINUOUS GIVING)

Anonymous (2)  
Adreani Foundation  
Advanced Sprinkler Systems, Inc.  
Shirle Affeldt  
Mr. Leroy R. Anderson  
Ms. Barbara J. Baer  
Mr. and Mrs. Matthew A. Baer  
Mr. and Mrs. Rudolf Bajzek  
Ms. Diana Baldacci  
Mrs. Sue Bergen

Mrs. Jennie Berk  
Bloomington Lions Club  
Ms. Carlene M. Blumenthal  
Mr. and Mrs. David Brint  
Dr. Steven U. Brint  
Scott Byron & Company  
Mr. Dominic Calabrese  
Mr. and Mrs. Bernard J. Campbell  
Carol J. Carl  
Mrs. Linda Carpenter  
Mr. and Mrs. Walter S. Carr  
Mr. and Mrs. Robert Carroll  
Chicago Mexico Lions Club  
Mrs. Lois Chudacoff  
Mr. Ali Cinar  
Ms. Marcia E. Cohen  
Lions John and Pat Coleman  
Kara Crumbliss, O.D.  
Mr. Rick M. Daitchman  
Davis Imperial Cleaners, Inc.  
Mr. Al Dorevitch  
Mr. and Mrs. Richard M. Doub  
Mrs. Carmen E. Fair  
Ms. Leslie G. Finkle  
Mr. and Mrs. Jon W. Fisher  
Dr. and Mrs. Gerald A. Fishman  
Mr. George V. Fluks  
Dr. Andrew W. Forrester  
Fox River Grove Lions Club Inc  
Mrs. Debbie S. Frank  
Dr. Kelly A. Frantz and Mr. Karl J. Frantz  
Ms. Lynn Froy  
Mr. and Mrs. Richard V. Furnari  
Mrs. Constance J. Gallart  
Elissa Geier, Psy.D.  
Mr. and Mrs. George M. Gogola  
Mrs. Gerilyn A. Greenberg  
Ms. Ellen F. Gross  
Mrs. Sheila H. Gutman  
Mr. and Mrs. William R. Hagedorn  
Harris and Harris LTD  
Mrs. Gayle Harris  
Mr. and Mrs. Matt Hart  
Ms. Nancy Hartman  
Ms. Juanita L. Jefferson  
Mr. Thomas R. Johnston  
Ms. Liane J. Joseph  
Mr. Keith A. Kebernik  
Dr. Manus C. Kraff  
Ms. Edith Kubas  
La Grange Highlands Lions Club  
Mr. and Mrs. Emerson W. Lacey, Jr.  
Mr. and Mrs. Marvin Lader  
Mrs. Alyce I. Lang  
Mr. and Mrs. Joseph A. Lasky  
Mrs. Julie L. Lehrman  
Mrs. Andrea W. Leshem  
Mrs. Lorrie Levitz  
Mr. and Mrs. Thomas E. Livingston  
Mrs. Tamara Lorber  
Mr. and Mrs. David J. Malina  
Mr. Randy Markowitz  
Mr. and Mrs. Raymond McCaskey  
Mr. R. V. McGrath  
Mr. and Mrs. William McNally

Mrs. Penny Meyers  
Ms. Margaret M. Michalski  
Midwest Truck & Auto Parts, Inc.  
Mr. and Mrs. Edward Mizicko  
Mrs. Gloria G. Morison  
Ms. Myrna Natkin  
Mr. James E. Neuhauser  
Northwest Lions Club  
Mr. Patrick W. O'Leary  
Ms. Amy W. Olswang  
Ms. Joan L. Oslan  
Mr. and Mrs. Charles Perlman  
Mr. Pasquale Perrone  
Mrs. Jeanette S. Peter  
Mrs. Debbie Piolet  
Mrs. Francine Pine  
Ms. Deloris Pinkney  
Polk Bros. Foundation  
Ms. Susan Kushner Pollack  
Mr. and Mrs. James E. Pushaw  
Mrs. Lynn C. Razowsky  
Mr. and Mrs. Robert C. Rheinheimer  
Mr. Allen J. Rogers  
Mr. David A. Ross  
Mr. and Mrs. Robert N. Rourke  
Mr. and Mrs. Lawrence P. Rowells  
Mr. and Mrs. David Rushing  
Mr. and Mrs. Joseph Samuels  
Mr. and Mrs. Joseph I. Sana  
Mrs. Marjorie Sandlow  
Ms. Marika O. Schaefer  
Mr. James W. Schmitt  
Ms. Linda G. Schub and  
Mr. Jay Wightman  
Richard A. Shapiro, M.D.  
Mrs. Roslyn C. Sheppard  
Mrs. Melissa Silverman  
Mr. and Mrs. Richard P. Small  
Rabbi Steven Lowenstein and  
Mrs. Julie Stark-Lowenstein  
Mr. and Mrs. Irvin M. Stein  
Mr. and Mrs. Ronald A. Stepp  
Mr. and Mrs. Phillip L. Stern  
Mrs. Mindy B. Sterns  
Mr. Warren G. Stober  
Mrs. Julie Stracks  
Drs. Janet P. Szlyk and  
Jeffrey M. Jackson  
Ms. Anna L. Thomas  
Mr. John L. Toboja  
Mr. Don Toy  
Ms. Susan Ulaszek  
Mr. and Mrs. Donald J. Vilim  
Mrs. Sheila G. Wexler and  
Mr. Philip Block  
Willow Springs Lioness Club  
Mr. Harvey W. Wittenberg  
Mr. and Mrs. James P. Young  
Mr. and Mrs. Jerrold H. Zar  
Ms. Helene S. Zarcone  
Dr. and Mrs. Simon Zimnowodzki



BRONZE LEVEL  
(10+ YEARS OF CONTINUOUS  
GIVING)

Anonymous (2)  
Ms. Letty Abel  
Mr. and Mrs. William Abrams  
Ms. Mary Abramson  
Mrs. Debora P Aghion  
Ms. Janet L. Ahrensfeld  
Alden Management Services  
AL-TY Corporation (Norton's  
Restaurant)  
Andrea and Richard Amend  
Mr. and Mrs. Breman Anderson  
Mr. and Mrs. Robert G. Anderson Jr  
Mr. and Mrs. John S. Anthony  
Art Optical Contact Lens, Inc.  
Mr. and Mrs. Peter M. Ascoli  
Assurance Agency, Ltd.  
Mr. and Mrs. Donald A. Belgrad  
Dr. and Mrs. Ira J. Bernstein  
Mr. and Mrs. Philip Blackwell  
Marcia E. Blake, O.D.  
Mr. and Mrs. Donald Blakey  
Ms. Susan Block  
Mrs. Ruth Goodman Blum  
Helen Brach Foundation  
Mr. Preston Bricker  
Brinshore Development, LLC  
Ms. Elaine Britton  
Ms. Anne L. Buda  
Mr. Robert F. Callbeck and Ms.  
Margaret L. Waverly  
Mr. Michael D. Carey  
Mr. and Mrs. William T. Carey III  
Ms. Carol L. Carr  
Mr. and Mrs. Joseph M. Carroll  
Harry F. & Elaine M. Chaddick  
Foundation Inc.  
Lion John C. Chisum  
Mr. Robert W. Churchill  
Ms. Alexandra Churma  
Clarendon Hills Lions Club  
Mr. Robert W. Clarke  
Ms. Michelle Clyne and  
Mr. John Paprocki  
Ms. Anida Johnson "Cookie" Cohen  
Dr. and Mrs. Michael Conrad  
Mr. and Mrs. Robert L. Cormier  
Mr. and Mrs. Noel P. Cusick  
Mr. Michael A. Davis  
de Giulio kitchen design, inc.  
Russell and Frieda De Yong Foundation  
Mr. and Mrs. Robert O. Delaney  
Ms. Barbara Desmond  
Ms. Catherine E. K. Diggle  
Mr. Charles Diorka  
Mrs. Mary D. Disis  
District 1-A Lions Clubs  
Mr. and Mrs. James E. Drexler  
Mr. Albert J. Dru  
Ms. Colleen C. Dwyer  
Mr. William J. Dzialo  
Mr. and Mrs. Joseph Ebster

Mrs. Sally Eide  
The Evangelical Lutheran Church  
of the Good Shepherd  
Evergreen Park Lions Club  
Family Club Solta  
Mr. Nairn Farnsworth  
Mr. and Mrs. Edward Filippini  
Ms. Phyllis L. Fineberg  
Ms. Christine M. Fiorito  
Mr. and Mrs. Randolph H. Foster  
Mrs. Arlene Frommer  
Ms. Joan T. Gagen  
Mrs. Janet R. Gates  
Mrs. Arlene Gellis Segal  
Mr. David R. Gerber  
Mr. and Mrs. Dean Gerber  
Mr. Frank Giglio  
Glen Ellyn Lions Club  
Mrs. Sheila R. Goldberg  
Mr. Arnold Goldstein  
Ms. Dianne E. Goren  
Grant Thornton LLP  
Ms. Beverly Gumola  
Mr. and Mrs. Glenn Hagberg  
Mr. and Mrs. Bruce R. Hague  
Mr. and Mrs. Ernest Hamel  
Ms. Karen S. Hammermeister  
Ms. Gwendolyn Harris  
James M. Harris, O.D.  
Mrs. Jeanene C. Hazen  
The Healthcare Foundation of  
Highland Park  
Ms. Heather E. Hebbeler  
Mr. William Held  
Mr. and Mrs. Richard Herman  
Mr. Leo F. Hickman  
Highland Park Joy Cleaners Inc.  
Mrs. Joan Holleb  
Mrs. Carol Honigberg  
Mrs. Marianne S. Horowitz  
Mr. and Mrs. David Huber  
Ms. Jayne A. Hultman  
Mr. and Mrs. Richard L. Jacobs  
Ms. Donna G. Jaggard  
Mr. Richard Jankowicz  
Mr. R. Razz Jenkins and  
Prof. Patti Interrante  
Mrs. Dolores C. Jilovec  
Dr. Mary Kay Johnson  
Jolie Maison, LTD  
Mr. and Mrs. John C. Jones  
Mrs. Jaclyn Joseph  
Mr. and Mrs. Reid C. Kanies  
Mrs. Cindy Kaplan  
Dr. and Mrs. Douglas S. Kaplan  
Mr. and Mrs. Robert N. Kaplan  
Mrs. Edna Kaucher  
Mr. and Mrs. Michael Kearney  
Mr. Michael L. Kelly  
Keyth Group Companies  
Mr. Robert Kim  
Mr. and Mrs. Michael J. Kinn  
Mr. and Mrs. Philip Kinsella  
Mr. and Mrs. Fred Klage, Jr.

Mr. and Mrs. Roger S. Knopf  
Gerald A. & Karen A. Kolschowsky  
Foundation  
Ms. Myrna B. Kopin  
Ms. Lois Krabec  
Ms. Cynthia E. Krch  
Mr. and Mrs. Lawrence P. Lanciotti  
Mr. Henry L. Latkin  
Mr. Steven Laughman  
Ms. Shirley Lauriano  
Mrs. Kirsten Laurie  
Mr. and Mrs. Michael Leaf  
Ms. Davida Levy  
Ms. Judith R. Levy  
Mrs. Laurie F. Lieberman  
Ms. Mary Lu Linnane  
Mr. and Mrs. Vincent L. Locascio  
Locke Lord LLP  
Lodge Friendship No. 66 C.S.A.  
Mrs. Joan Loeb  
Mr. Joseph S. Lushnia  
Mrs. Roberta G. Mann  
Mr. Robert F. Mantsh  
Mariani Enterprises, Inc. DBA Mariani  
Landscape  
Mattingly Low Vision, Inc.  
Mr. Mark McGee  
Mr. and Mrs. Michael Meehan  
Metro Commercial Real Estate, Inc.  
Mr. and Mrs. Carl Meyer  
Ms. Barbara Miller  
Mr. and Mrs. Steve Miller  
Mr. and Mrs. Martin Miretzky  
Ms. Ericka E. Mixon  
Mr. and Mrs. Morton R. Mollner  
Ms. Clara S. Moran  
Mr. George W. Morris  
Dr. and Mrs. Gregory Moss  
Mr. and Mrs. Peter C. Moy  
Mr. and Mrs. Theodore F. Mueller  
Mr. Richard Musson  
Mr. and Mrs. Michael Nadler  
Naperville Noon Lions Club  
Mrs. Ann Nathan  
Ms. Mary M. Naughton  
Marguerite L. Nelson  
Mr. Timothy P. Neylon  
Ms. LaVerne A. Nichols  
Non Profit Risk Services, Inc.  
Mr. Gerald L. O'Donnell  
Mr. and Mrs. Brian Oriente  
Ms. Julie Overbeck  
Mrs. Marla B. Patzik  
Mr. and Mrs. James J. Pelts  
Mr. and Mrs. Robert Perkins  
Ms. Virginia L. Phillips  
Ms. Joyce Plecki  
Ms. Elizabeth M. Postell  
Primex, Inc.  
Ms. Nancy Rein  
Retina Consultants, LTD  
Michelle and Gary Rich  
Mr. Lester Rockoff  
Mr. and Mrs. Irwin Ross

BRONZE LEVEL (CONT.)  
Mrs. Lisa E. Rush  
Mr. Frank Russo  
Mr. and Mrs. Joseph F. Ruth  
Mr. Jack A. Ryan  
Mr. and Mrs. Roger Salemi  
Ms. Mary Beth Schirmang  
Mr. Edward Schmidt  
Mr. and Mrs. Richard H. Schnadig  
Dr. Scholl Foundation  
Mrs. Kim Schwartz  
Mrs. Lili Schwartz  
Mrs. Roberta Seedman  
Mr. and Mrs. Charles Shemely  
Mr. and Mrs. David Shine  
Ms. Martha Sichau  
Mrs. Jody Silverman  
Mr. Leonard P. Slotkowski, Jr.  
Ms. Mary Jane Smilanik  
Mrs. Deborah L. Smith  
Mr. and Mrs. Zygmunt K. Sokolnicki  
Mrs. Mary Ann Spyrison  
Ms. Sharon J. Stanley  
Mr. Leonard F. Stein  
Mr. Robert L. Stephenson

Mrs. Alison Stolberg  
Mr. and Mrs. Robert Stone  
Mrs. Kim Strauss  
Mr. Thomas Swigart, Jr.  
Mr. Kenneth L. Tarnoff  
Mrs. Nancy M. Taxman  
Mr. Thomas Theodore  
Thompson Family Foundation  
Tinley Park Lioness Club  
Mr. and Mrs. Jack Tobias  
Mr. and Mrs. Stan Tryba  
Mr. Pete and Mrs. Pam Tully  
Mr. Eric F. Ulaszek  
Union Pacific Foundation  
Ms. Lydia Usha  
Ms. Shirley A. Vallort  
Mr. and Mrs. Edward M. Vitu  
Ms. Katherine Wachowski  
Mr. and Mrs. Johannes Weertman  
Mr. and Mrs. Robert G. Wegner, Jr.  
Ms. Dorothy R. Weiskopf  
Mr. and Mrs. Ernest E. Werle  
Ms. Virginia S. Willcox  
Ms. Judith L. Williams  
Ms. Karleen Williams

Mr. and Mrs. Michael J. Windle  
Mr. and Mrs. Edmund F. Wisz  
Wohlers Family Foundation  
Mr. and Mrs. Dewey Young  
Ms. Jane Ziebart  
Ms. Susan Zissman  
Mr. Eric F. Ulaszek  
Union Pacific Foundation  
Ms. Lydia Usha  
Ms. Shirley A. Vallort  
Mr. and Mrs. Edward M. Vitu  
Ms. Katherine Wachowski  
Mr. and Mrs. Johannes Weertman  
Mr. and Mrs. Robert G. Wegner, Jr.  
Ms. Dorothy R. Weiskopf  
Mr. and Mrs. Ernest E. Werle  
Ms. Virginia S. Willcox  
Ms. Judith L. Williams  
Ms. Karleen Williams+  
Mr. and Mrs. Michael J. Windle  
Mr. and Mrs. Edmund F. Wisz  
Mr. and Mrs. Dewey Young  
Mr. and Mrs. Jerrold H. Zar  
Ms. Susan Zissman+

+Denotes those who have either moved up a Hamill Society level or are brand-new to the Hamill Society.

IN-KIND KINDNESS

54kibo  
Alice Benjamin Interiors  
Leilani Allen  
Allyu Spa  
Anne Fontaine  
Anthony Cristiano  
Arthur Murray Dance  
Studios  
BarkBox  
Bartucci Salon  
Bee Crazy  
Benihana  
Andrew Berlin  
Binny's Beverage Depot  
Bluestone Restaurant  
Book of the Month Club  
BRONCA  
Holly Brown  
Bucephalus Bikes  
Cantigny Golf  
Carlisle/ Etcetera  
CBR Wood craft  
Chalet  
Chicago Botanic Garden  
Chicago Plastic Surgery  
Center, LLC  
Clare V.  
Cresco Stems  
CrossTown Fitness  
Crystal Cave

Dana Rebecca Designs  
Davis Imperial Cleaners  
Destination Kohler and  
Kohler Stewardship  
Eli's Cheescake  
Erica's Jewelry  
FELT  
FIRST ASCENT Climbing &  
Fitness  
FLOAT SIXTY  
Food For Thought  
Foodstuffs  
Fumée Claire Candles  
George Fourkas  
George the Salon  
Glenview Car Wash, Inc.  
Megan Goldish  
Green Bay Cycles  
Khalid Hasan  
Home Chef  
Hub 51  
Dave Huber  
Implevents  
David Inglis  
IPetChicago  
Jane Skin Care Studio  
Jayson Home  
J&L Catering  
John Reilly Photography  
Kendra Scott Jewelry

Kimpton Hotel Allegro  
Cheryl Kraff-Cooper, M.D.  
L'Occitane en Provence  
Laudi Vidni  
Lauren Lein Ltd.  
Leah Chavie Skincare  
Lemoncello Brows & Beauty  
Lost Mountain Adventure  
Golf  
Lou Malnati's Pizzeria  
Mallow Run Winery  
Nina Mann  
Marchesa Restaurant  
Merz Apothecary  
Mira Couture  
Hanelore Mui  
Music of the Baroque  
Nomadic Ant  
Northwestern Athletics  
Pagoda Red  
Pinkalicious Nails & Spa  
Planet Paws Pet Club  
Portillo's  
PRP Wine International  
RedE Boutique  
River Valley Farmer's Table  
Robert Campbell  
Portraiture  
Roscoe Village Bikes  
Elisabeth Roth

Royal Palms Shuffle Board  
Club  
Saks Fifth Avenue  
Salon Élan Vital  
Sanders Fine Portraits  
Scooter's Frozen Custard  
Serena & Lily  
Shred415  
St. John Boutique  
Janet P. Szlyk, Ph.D.  
The Drake Hotel  
The Field Museum  
The Glen Club  
The Homestead Resort  
Tiziana Terenzi  
Tokyo Nails  
Tory Burch  
Trish McEvoy  
Tufano's Vernon Park Tap  
Underthings  
Weller Dental  
Willow Room  
Wines for Humanity  
Wonderful Macha  
Susan Young  
Zazu Salon  
Zzazz Productions



# LIGHTHOUSE KEEPERS

The Lighthouse Keepers is a group of special friends of The Lighthouse who annually give \$1,000 or more. We regret we cannot list every donor but we extend our sincere thanks to each each and every one! (This list reflects cumulative gifts of more than \$1,000 received between July 1, 2020 and June 30, 2021.)

## \$250,000 AND ABOVE

Foglia Family Foundation  
Mr. and Mrs. David Huber  
Peter Wisniewski Trust

## \$100,000 - \$249,999

Robert R. McCormick Foundation  
William Keith Turner Trust  
Wohlers Family Foundation

## \$50,000 - \$99,999

Anonymous (2)  
The Boeing Company  
Cless Family Foundation  
Crown Family Philanthropies  
The William Randolph Hearst Foundations  
Mr. and Mrs. Raymond McCaskey  
The Elizabeth Morse Charitable Trust  
Michael A. Neigoff Estate  
Polk Bros. Foundation  
The Reader's Digest Partners for Sight Foundation  
Mr. and Mrs. Richard H. Schnadig  
Target Corporation  
Estate of Ernest F. Ulrich

## \$25,000 - \$49,999

Anonymous  
The Barker Welfare Foundation  
Anne Benson Estate  
BlueCross and BlueShield of Illinois  
BMO Harris Bank  
Mr. Robert W. Clarke  
Dr. and Mrs. Thomas A. Deutsch  
Family Alliance Foundation  
Julius N. Frankel Foundation  
Lloyd A. Fry Foundation  
The Leo S. Guthman Fund  
Leo Krupa Foundation  
Mr. and Mrs. Marvin Lader  
Charlene Landsberg Smith Living Trust  
Mr. and Mrs. Lawrence F. Levy  
Mr. and Mrs. Steven N. Pangere  
PERT Foundation  
Ms. Denise Peterson  
Mr. and Mrs. Gary Rich  
Savant Wealth Management  
Special Kids Foundation  
Florence and Laurence Spungen Family Foundation  
Dollie Swarts Memorial Trust  
United Way of Metropolitan Chicago

## \$10,000 - \$24,999

Anonymous (4)  
Ackerman Foundation, Inc.

Fred C. and Katherine B. Andersen Foundation  
Charles\* and Margery\* Barancik Foundation  
Mr. Paul A. Bartman  
The Berner Charitable and Scholarship Foundation  
Mr. and Mrs. Abraham Bohrer  
Helen Brach Foundation  
Mr. Brent Brodeski  
Fred J. Brunner Foundation  
Paul and Pearl Caslow Foundation  
CIBC Bank  
Comcast  
ComEd  
Abe and Ida Cooper Foundation  
CSX Corporation  
The Patrick and Anna M. Cudahy Fund  
D and R Fund  
Mrs. Nancy J. Frankenbach  
Freeborn & Peters LLP  
Ellis Goodman Family Foundation  
Ms. Caroline Grossinger  
Mr. and Mrs. Bruce R. Hague  
Carrye & Abraham S. Hart Fund  
The Healthcare Foundation of Highland Park  
Hinsdale Junior Woman's Club  
Frederick E. & Ida H. Hummel Foundation  
Mr. Edward C. Jepson and Dr. Susan Sicotte\*  
Mrs. Beena Joseph  
Dr. and Mrs. Joel A. Kaplan  
Mr. Ron Katz and Ms. Cheryl Coleman  
Gerald A. & Karen A. Kolschowsky Foundation  
Dr. Manus C. Kraff  
Henrietta Lange Burk Fund  
Lawyers Trust Fund of Illinois  
Mrs. Averill Leviton  
Ms. Elizabeth Amy Liebman  
Elick and Charlotte Lindon Charitable Trust  
Mrs. Patricia M. Livingston  
Ellen and Todd Martin  
Mr. and Mrs. Steven G. Martin  
Mazza Foundation  
James W. and Frances G. McGlothlin Foundation  
Mr. and Mrs. William McNally  
Arthur R. Metz Fund, Globe Foundation  
Northern Trust Foundation  
Edmond and Alice Opler Foundation  
Owens Foundation  
Mr. Arturo Saenz  
Dr. Scholl Foundation

Sea Products  
Laura and Adam Selipsky  
Mrs. Ilene Shaw  
Ms. Alexandra Singer  
The Siragusa Family Foundation  
The Edward S. Sprague Foundation  
The Stahl Family Charitable Foundation  
Mr. and Mrs. James Steinback  
Mr. Juan J. Suarez Estate  
Drs. Janet P. Szlyk and Jeffrey M. Jackson  
Mr. Ray Van Dyke  
The A. Montgomery Ward Foundation  
Windstream

## \$5,000 - \$9,999

Anonymous (2)  
Adreani Foundation  
Mr. MJ Anderson  
Ms. Lori Coffey  
Mrs. Rosanne Cohen  
Lions John and Pat Coleman  
Harvey and Ethel Daeumer Foundation  
Mr. and Mrs. Noel Elfant  
Mr. and Mrs. Ed Fiorentino  
Mrs. Susan G. Gohl  
Max Goldenberg Foundation  
Goldman Sachs & Company  
Google LLC  
Helen M. Harrison Foundation, Inc.  
Harry F. & Elaine M. Chaddick Foundation Inc.  
Innovating Worthy Projects Foundation  
Mr. and Mrs. James M. Kesteloot  
Mrs. Kristine Kinder  
Klaff Family Foundation  
Dr. Cheryl Kraff-Cooper and Mr. Carey Cooper  
Mrs. Angela Lapid  
Ms. Cheri Lawrence  
Lefkovitz Foundation  
Mr. and Mrs. Daniel Lillyman  
Locke Lord LLP  
Macy's  
Mr. and Mrs. Robert Manning  
Mrs. Kristina McGrath  
Mr. and Mrs. Joseph Moran  
Mr. Paul J. Much  
Nordstrom  
Mr. Patrick J. O'Hara  
Pave Works  
Mr. and Mrs. Robert Randolph  
Mr. and Mrs. John A. Raske  
Mr. Paul W. Rink  
Benjamin J. Rosenthal Foundation

Mr. Sam Rovit and Ms. Abigail MacKenzie  
Sage Foundation  
Mrs. Sheree Schimmer  
Ms. Sally Schwartz  
Mr. and Mrs. Kipling Scott  
Charles and M.R. Shapiro Foundation, Inc.  
Sirius  
Rabbi Steven Lowenstein and Mrs. Julie Stark-Lowenstein  
Walgreen Co.  
Mr. and Mrs. Dale Wiersbe  
Woodward, Inc.  
Mr. Michael Zaccaro  
George H. Zendt Charitable Trust

## \$2,500 - \$4,999

Anonymous  
Mr. and Mrs. James Abrams  
Albertsons/Osco Drug  
Appelbaum Family Foundation  
Mr. and Mrs. Donald A. Belgrad  
Anne Benson Estate  
Mr. and Mrs. Sherwood Bollier  
Mr. and Mrs. David Brint  
Mr. and Mrs. Joel Bruckman  
Ms. Janice A. Clarke  
Mr. and Mrs. Geoffrey Cubitt  
Mr. and Mrs. Dino Damato  
Mr. Vernon R. Duncan  
Mr. and Mrs. George M. Gogola  
Grant Thornton LLP  
Dr. and Mrs. Todd Jensen  
JLL  
Mr. and Mrs. John C. Jones  
Dr. and Mrs. Colman R. Kraff  
Mr. and Mrs. Terrence J. Longo  
Mrs. Nina Mann  
Mr. and Mrs. Michael Meehan  
Mr. and Mrs. Robert E. Morrison  
Nesko Electric Company  
Perkins Coie LLP  
Retina Consultants, LTD  
Mrs. and Mr. Phyllis Schwartz  
Roger and Susan Stone Family Foundation  
Abbie E. Tyrrell Fund  
Samuel Weinstein Family Foundation  
Wendella  
Mr. and Mrs. Mark Wolfe  
Harold D. and Hazel C. Wright Foundation  
Ms. Megan E. Young  
Susan Young

## \$1,000 - \$2,499

Anonymous (3)  
Mr. and Mrs. Steven H. Adelman  
Ms. Evelyn Alter  
Mr. and Mrs. Ben Applegate  
Mr. and Mrs. Peter M. Ascoli  
Mr. Motti Attia and Mrs. Aliza Olenick  
Mr. and Mrs. John Baker  
Mr. James C. Baldwin

Mr. and Mrs. Tom Berg  
Peter and Lisa Birmingham  
Ms. Valerie M. Block  
Mrs. Sherrill Bodine  
Mr. Richard R. Boykin  
Mr. and Mrs. James E. Bramsen  
Ms. Holly Brown  
Mr. and Mrs. William R. Buecking  
Mr. and Mrs. Walter S. Carr  
Mr. and Mrs. Franklin A. Chanen  
Mr. and Mrs. Richard M. Chaney  
Clarendon Hills Lions Club  
Mr. and Mrs. Robert Clifford  
Mr. and Mrs. William Cole  
Community Foundation of the Fox River Valley  
Dr. Michael and Mrs. Virginia Conrad  
Mr. Robert Conrardy and Ms. Diane Dygegt  
Mr. Mark Cosentino  
Ms. H. Joan Costello\*  
Kara Crumbliss, O.D.  
Ms. Angela J. D'Antonio  
Darien Lions Club  
Delta Building Technologies  
Delta Gamma, Chicago North Shore Alumnae  
Alex Demond Fund  
Mr. and Mrs. Donald D. Duncan  
George M. Eisenberg Foundation for Charities  
Ms. Alison Faith  
Mr. and Mrs. Jon W. Fisher  
Ms. Bethany Florek  
Mr. John S. Gates, Jr.  
Gold Standard Enterprises, Inc. DBA Binny's Beverage Depot  
Ms. Patricia Golden and Mr. Steve Grunyk  
Mr. and Mrs. Charles Goldman  
Albert Goodstein Family Foundation  
Mr. Jonathan Grabill  
Mrs. Irene Michaels Granat and Mr. Arnold Granat  
Hochberg Family Foundation  
Ms. Catherine M. Hollander  
Ms. Mary K. Howe  
Mr. and Mrs. Dave Huber, Jr.  
Mr. and Mrs. Philip Huber  
Mr. and Mrs. Martin Hughes  
Ms. Charlotte Jackson  
Mr. and Mrs. Jerry Januszewski  
Jocarno Fund  
Ms. Alexandra Johnston  
Ms. Dorothy A. Kapchinski  
Dr. and Mrs. Douglas S. Kaplan  
Mr. and Mrs. Robert N. Kaplan  
Ms. Susie Kassof  
Mr. and Mrs. Mark Kaufman  
Mr. Tim D. Kenrick  
Mr. Al Kola  
Dr. Caryn and Mr. Lowell Kraff  
Ms. Fran Kraus  
Ms. Cynthia E. Krch

Mrs. Deborah Krolik  
Mr. and Mrs. James Lasky  
Mr. Henry L. Latkin  
Mr. Steven Laughman  
Mr. Steven H. Lavin  
Mr. and Mrs. Mitchell Lichtenstein  
Mr. Eric Linthicum  
Mr. and Mrs. Thomas E. Livingston  
Loeb Equipment  
Mr. Lawrence E. Maloney  
Mr. Peter Manis and Ms. Susan Richman  
Mr. Richard P. Mann  
Mattingly Low Vision, Inc.  
McLean Foundation  
Ms. Jeannette Mendez  
Ms. Maggie Michelson  
Midtown Athletic Club  
MIS Computer  
Mr. Michael Mondschean  
Ms. Natalie Mosallam  
Mr. and Mrs. Kurt A. Muller  
Ms. Karin Norington-Reaves  
Mr. and Mrs. William North  
Northfield Township  
nuHaus  
Mr. and Mrs. Brian Oriente  
Mr. Thomas Osborne  
Palos Lions Club  
Ms. Elisabetta Paparella  
Mr. and Mrs. James N. Perry  
Mr. Mark Peskor  
Mrs. Sally Jo Pfaff  
Mr. and Mrs. James Pillars  
Mr. and Mrs. Tom Powers  
Mr. and Mrs. Michael F. Realy  
Mr. Todd Rigglin  
Roberts Family Foundation  
Rocco Fiore & Sons Inc.  
Mr. and Mrs. Steven B. Ross  
Ms. Elisabeth Roth  
Mr. Anthony Salcito  
Mr. William J. Schlesser  
Mr. and Mrs. Alan Schwartz  
Ms. Kathy Share  
The Sherwin-Williams Company  
Mrs. Roni Siegel  
Mr. Charlie Sprayregen  
Mr. Irving Stenn, Jr.  
Mr. and Mrs. Dick Stoken  
Mrs. Alison Stolberg  
Ms. Theresa Strnad  
Mr. Peter Sutton  
Taft Stettinius and Hollister LLP  
Taxman, Pollock, Murray, & Beckerman, LLC  
Mr. Don Toy  
Philip R. Troyk, Ph.D.  
Mr. Pete and Mrs. Pam Tully  
Turano Baking Company  
George P. White Foundation  
Ms. Melissa Wittenberg  
Young Horses



# THE CHICAGO LIGHTHOUSE BOARD OF DIRECTORS

<b>CHAIRMAN</b> Robert W. Clarke Principal The RJ Clarke Group LLC	<b>EXECUTIVE COMMITTEE MEMBERS-AT-LARGE</b> Caroline Grossinger Managing Partner Grossprops Associates	David J. Huber, CFP Financial Advisor/ Managing Director Savant Wealth Management
<b>VICE CHAIRMAN</b> Edward C. Jepson Jr Attorney, Employment Law Vedder Price (Retired)	Richard H. Schnadig Attorney, Employment Law Vedder Price (Retired)	Beena Joseph
<b>PRESIDENT</b> Janet P. Szlyk, Ph.D. President and CEO The Chicago Lighthouse	Julie A. Stark Owner / Managing Director The Stark Solution	James M. Kesteloot, CRC President Emeritus The Chicago Lighthouse
<b>TREASURER</b> John Raske Managing Director, Diversified Industries Commercial Mid-Market, BMO Harris Bank	<b>LIGHTHOUSE INDUSTRIES REPRESENTATIVE</b> Michael F. Meehan Sales, Marketing and Cost Containment Consultant	Manus C. Kraff, M.D. Founder and President Kraff Eye Institute
<b>ASSISTANT TREASURER</b> Bruce Hague President, Commercial Banking CIBC Bank USA	<b>DIRECTORS</b> Richard R. Boykin Attorney at Law Bridge Builders Consulting & Legal Services	Marvin Lader (Retired) Datavantage Corporation
<b>SECRETARY</b> Jaclyn McNally Partner Perkins Coie LLP	Joel Bruckman Attorney Freeborn & Peters LLP	Thomas Livingston Head of State Government Relations & Community Affairs CSX
<b>IMMEDIATE PAST CHAIR</b> Gary Rich (Retired)	Anida Johnson "Cookie" Cohen	Ellen Martin
	Thomas A. Deutsch, MD Senior Advisor to the CEO Rush University System for Health	Judy McCaskey Educator and Civic Volunteer
	Sandra C. Forsythe	Karin Norington-Reaves CEO Chicago Cook Workforce Partnership
	Megan Goldish	Paul W. Rink (Retired) Attorney
		Sheree Schimmer

All lists are reflective of the time of publication.

# AUXILLARY BOARDS

<b>ASSOCIATE BOARD</b> <i>President</i> Sally Schwartz	<i>Executive Committee</i> Haley Baer Gail Boorstein Allie Davidson Lindsey Dext Jo Ann Galston Terri Gordon Gayle Harris Amy Hausman Jaclyn Joseph Julie Kraff Cheryl Kraff-Cooper, M.D. Debi Learner Pamela Leslie Carly Linton Nina Mann Penny Meyers Sheila Moss Joani Oslan Fran Pine Ilene Shaw Julie Smith Alison Stolberg Kim Strauss Dana Weiss
	<b>JUNIOR BOARD</b> Joel Bruckman, Co-Chair Megan Goldish, Co-Chair
	<b>LIONS STRICKFADEN ADVISORY COMMITTEE</b> <i>Chairman</i> Past District Governor Lion John Coleman
	<i>Members</i> Past Int'l Director Lion & PDG Lion Dan O'Reilly PDG Lion Steve Anton PDG Lion Austin D'Souza PDG Lion Howard Swacker
	<i>Governor</i> Lion Gail Anton

# CHICAGO LIGHTHOUSE INDUSTRIES BOARD OF DIRECTORS

<b>CHAIRMAN</b> Thomas Powers Medline Industries, Inc. (Retired)	<b>VICE CHAIRMAN</b> Don Belgrad Schnadig Corporation (Retired)
<b>PRESIDENT</b> Janet P. Szlyk, Ph.D. President and CEO The Chicago Lighthouse	<b>SECRETARY/TREASURER</b> Michael F. Meehan Sales, Marketing and Cost Containment Consultant
<b>DIRECTORS</b> Robert W. Clarke Principal The RJ Clarke Group LLC	Ted Mazola New West Realty Group
	Peter Miller Founder and President Security Systems, Inc.
	Gary Rich (Retired)
	Ted Wecker President CEO Skyline Furniture

# BOARD OF DIRECTORS MEMBERS EMERITI

Richard R. Fabbrini Carl Konrath James McVane, Jr. Esq.	<b>EMERITI IN MEMORIAM</b> In memoriam, we want to recognize past members emeriti, for without them, The Lighthouse would not be the organization it is today.
Norman F. Clarke Philip L. Cochran Mrs. Thomas A. Conners Mrs. Darius C. Franche III Mrs. Paul M. Godehn Mrs. Louis B. Kuppenheimer Mrs. Curry J. Martin Mrs. Ralph Mills Donald H. Palmer	James L. Palmer Mrs. James L. Palmer Mrs. William A. Patterson Mrs. Edwin S. Rosenbaum Ross D. Siragusa Raymond C. Wieboldt Jr. Mrs. Robert H. Wilson Mrs. P. Mark Wyman Theodore N. Zekman, M.D.

“The Lighthouse Industries Board is an opportunity to use my business talents to serve our mission. Employing people who are blind helps improve their lives and our community overall.”

—TED WECKER | Chicago Lighthouse Industries



Sally is pictured with her sister, Betsy (L) and her nephew, Alan (C) who participated in our Birth-to-Three Program.

“Joining the Associate Board began as something utterly personal. I’m overwhelmed by the commitment of my fellow members, who give their time and their resources out of a dedication to helping people live more independently.”

—SALLY SCHWARTZ  
Chicago Lighthouse Associate Board

All lists are reflective of the time of publication.



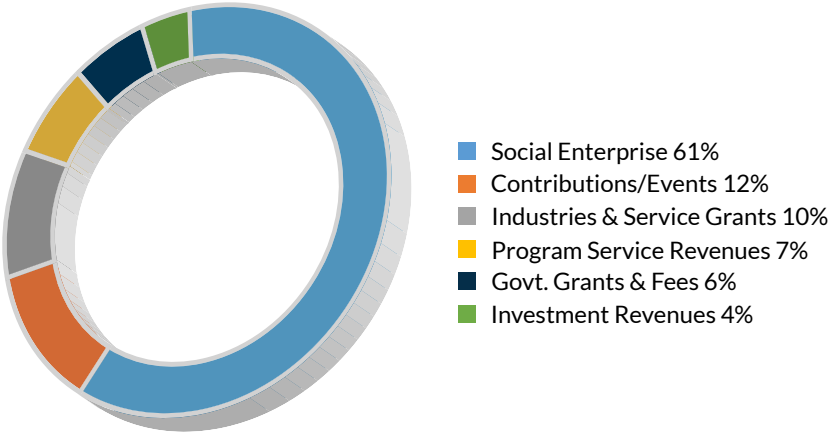
2020 - 2021 Consolidated Financial Summary and Comparison

# STATEMENTS OF FINANCIAL POSITION

as of June 30

ASSETS			
	2020	2021	
Cash	\$ 1,518,436	\$ 6,274,970	
Receivables, Net	3,827,188	7,070,009	
Inventories	1,195,950	610,565	
Investments	11,660,162	14,578,750	
Beneficial Interest in Perpetual Trusts	567,200	708,293	
Prepaid Expenses	323,019	369,258	
Land, Building and Equipment, Net	9,994,259	9,644,798	
<b>Total Assets</b>	<b>\$ 29,086,214</b>	<b>\$ 39,256,643</b>	
LIABILITIES AND NET ASSETS			
Liabilities	\$ 8,321,563	\$ 12,332,072	
Net Assets			
Unrestricted	7,149,224	8,916,220	
Unrestricted, Board Designated	8,241,055	12,510,922	
Temporarily Restricted	3,400,449	3,382,410	
Permanently Restricted	1,973,923	2,115,018	
<b>Subtotal Net Assets</b>	<b>\$ 20,764,651</b>	<b>\$ 26,924,571</b>	
<b>Total Liabilities and Net Assets</b>	<b>\$ 29,086,214</b>	<b>\$ 39,256,643</b>	

REVENUE SOURCES



# STATEMENTS OF ACTIVITIES

Period ended June 30

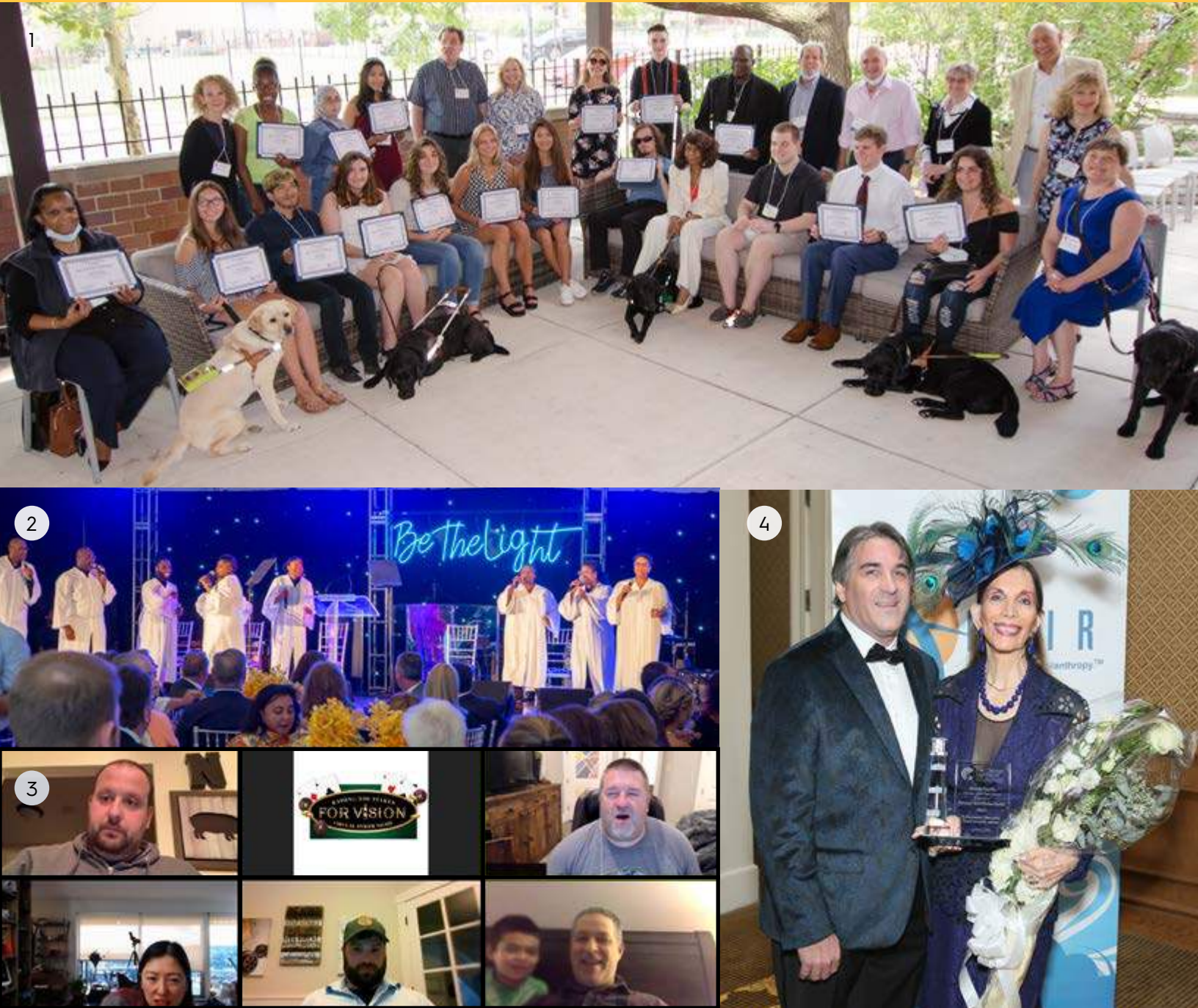
REVENUES			
	2020	2021	
Contributions & Bequests	\$ 3,157,143	\$ 5,777,340	
Lighthouse Industries Sales	3,551,569	3,802,526	
Call Centers/Service Contracts	28,667,195	31,264,860	
Program Revenues	6,105,492	6,204,301	
Investment Income	326,025	280,868	
Miscellaneous	117,803	—	
Change in Value of Split-Interest Agreements	(12,481)	132,256	
Net Realized Gain/(Loss) on Investments	183,225	367,022	
Net Change in Unrealized Appreciation of Long Term Investments	(370,491)	1,272,552	
<b>Total Revenues</b>	<b>\$ 41,725,480</b>	<b>\$ 49,101,725</b>	
EXPENSES			
Program Services	\$ 38,252,992	\$ 35,173,943	
Management & General	5,470,782	6,176,690	
Fundraising	1,028,739	1,290,835	
Public Relations	336,254	300,337	
<b>Total Expenses</b>	<b>\$ 45,088,767</b>	<b>\$ 42,941,805</b>	
CHANGE IN NET ASSETS			
	\$ (3,363,287)	\$ 6,159,920	
Net Assets at Beginning of Year	\$ 24,127,939	\$ 20,764,652	
Net Assets at End of Year	\$ 20,764,652	\$ 26,924,572	



# THE CHICAGO SOCIALIGHT

See and be seen at one of The Chicago Lighthouse’s unique and engaging events. Whether it’s a poker and casino night, a fashion show, or an evening of decadent desserts, there’s always something happening in support of our mission.

Be part of the fun! See our UPCOMING EVENTS at [chicagolighthouse.org/events](http://chicagolighthouse.org/events)



1. Our **Scholarship Awards Ceremony** celebrated the accomplishments of 25 students who are blind, visually impaired or disabled. Through The Lighthouse’s support, their dream schools and careers are within reach.

2. We celebrated the return to in-person events hosting this year’s **Seeing What’s Possible Annual Gala, “Be the Light,”** at the Millennium Park Rooftop Terrace Tent. Starting off the evening was a gospel choir singing, “Coming Out of the Dark.”
3. Virtual Poker: Celebrity Poker Player, Chris MoneyMaker, helps Raise the Stakes for Vision while playing in our **Virtual Texas Hold ‘Em Tournament** with other players from around the country.

4. This year, we were back on the runway and honored Chicago Philanthropist and Lighthouse friend, Susan Griffiths Gohl, accompanied by Jonathan Grabill, at **FLAIR**.
5. Our Associate Board’s 35th Annual **House & Garden Walk** goes virtual for the second year, featuring homes from around the country.

6. The Junior Board combined their two signature events this year hosting a virtual **Sips & Sweets for Sight**. All guests received a tote overflowing with branded sweets and wine from Clifton-Brewer Vineyards.

7. Our **2021 Gala Honorees**, Board Member David Huber and his wife, Nancy, smile alongside Chicago
- Lighthouse Board Member Caroline Grossinger.

8. Lighthouse employee, Kalari Girtley-Jackson, escorted by Scott Bobek, shines bright on the **FLAIR** runway as she models a ballgown from Mira Couture.

9. Guests enjoyed playing Canasta via Zoom during our Associate Board’s virtual **Games Galore** event.

10. Guests toast after making a generous group donation. Our 2021 **FLAIR** event was the most successful to date!



Unprecedented challenges—and new opportunities—emerge every day.  
**A gift to The Lighthouse's Endowment Campaign is an investment in our continued legacy.** With your support, we can keep opening doors that help people live more independent, fulfilling lives—long into the future.



A campaign to **ensure** that The Chicago Lighthouse will continue to provide essential **services** to people who are blind, visually impaired, disabled and Veterans **for years to come.**

**For more information or to donate, please contact:  
Janet P. Szlyk, Ph.D., President/CEO (312) 997-3644.**



The Chicago  
Lighthouse

1850 West Roosevelt Road, Chicago, IL 60608 | Tel (312) 666-1331  
222 Waukegan Road, Glenview, IL 60025 | Tel (847) 510-6200

[www.chicagolighthouse.org](http://www.chicagolighthouse.org)