

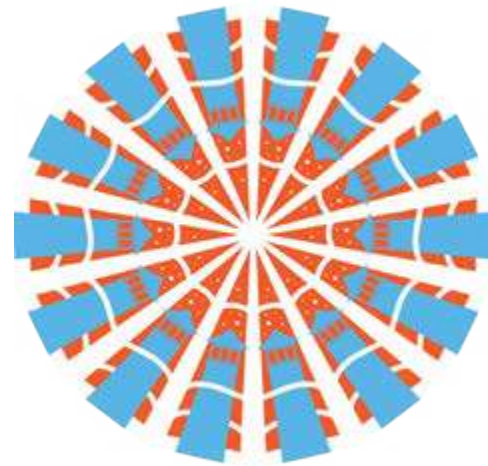


A KALEIDOSCOPE
OF SOCIAL IMPACT



The Chicago
Lighthouse

2021 ANNUAL REPORT



A REFLECTION OF BEAUTIFUL FORMS

Taking its name from the Greek word for “Observer of Beautiful Forms,” a Kaleidoscope uses reflection and motion to shift individual pieces into symmetrical patterns and changing views. Like those optical instruments, The Chicago Lighthouse’s 40 programs and services are continually moving pieces of a whole that reflect upon each other to create images of symmetrical beauty. The pieces may move and shift, and the views may change, but the beauty remains in the form of our everlasting “Community of Care.”

DEAR FRIENDS,

An annual report is more than simply a summary of accomplishments from the previous year. It is a reflection of how our many programs and services have combined to create something more impactful than the individual parts could ever accomplish on their own.

For 116 years, our programs have reflected the light of our community, illuminating the boundless potential of each individual we serve and collectively working together to improve the lives of individuals who are blind, visually impaired, disabled and Veterans everywhere. Our longevity and success are a result of the perpetual motion of innovation as we work to address our community’s constantly evolving needs.

In the following pages, you will read stories about how our programs create and reflect our vision of access and inclusion, working together to create a **Kaleidoscope of Social Impact**. From our Digital Accessible Experience experts, all of whom are blind, working with companies to optimize software for people with visual impairments to a weekly disability news radio segment, our work celebrates the potential of every individual and illustrates how those individuals, working together, create an ever-changing mosaic of beauty through purpose.

Our Kaleidoscope of Social Impact would be nothing without the individual pieces within it. Our clients, staff, volunteers, and supporters are the elements that, when reflected upon each other, create the beautiful form that is The Chicago Lighthouse.

Thank you all for being part of—and reflecting—our light.



Robert W. Clarke
Chair, Board of Directors

Janet P. Szlyk, Ph.D.
President and Chief Executive Officer



The Chicago Lighthouse

A KALEIDOSCOPE OF SOCIAL IMPACT

EDITORIAL CONCEPT Janet P. Szlyk, Ph.D.

WRITERS Aaron Baar; Jessica Grant; Sandy Murillo

CONTRIBUTORS Alisa Brill; David DeBoer; Lindsay Inglis; Jennifer Miller, J.D.

EDITORIAL BOARD

Aaron Baar; Angela D'Antonio; Jessica Grant; D. Todd Gray; Jennifer Miller, J.D.; Melissa Wittenberg

DESIGN Lisa Birmingham

PHOTOGRAPHY Maria Baker; Lisa Birmingham; Jessica Grant; Vincent Johnson; John Reilly; Mila Samokhina

For large print or Braille versions of the Annual Report, call: (312) 666-1331 ext. 3358, or email: publications@chicagolighthouse.org

CONTENTS

Creating Opportunities
Our Digital Accessible Experience (DAX) Team, led by IT professionals who are blind, helped to create new career opportunities for people with disabilities.



FEATURES

- P1 The Disability Minute
- P3 Creating Opportunities
- P5 All in the Family
- P7 Building the Future Together
- P9 Pioneering the Future
- P11 A Kaleidoscope of Social Impact

DEPARTMENTS

- P13 Planned Giving
- P14 Lifetime Donors
- P15 Hamill Society Gifts
- P18 In-Kind Kindness
- P19 Lighthouse Keepers
- P21 Board Listings
- P23 Financial Statements
- P25 Chicago SocialLight



Building the Future, Together

In Spring of 2022, we will break ground on “The Foglia Residences,” which will provide fully accessible, affordable housing for people with disabilities and Veterans.



Pioneering the Future

Our new Diabetes Prevention Program is helping our community to develop healthy lifestyle changes and prevent diabetic eye disease, the leading cause of blindness in the United States.

REFLECTING OUR COMMUNITY'S PRIORITIES:

"THE DISABILITY MINUTE"

By Sandy Murillo | Associate Producer, Chicago Lighthouse Media



I have always been interested in the media representation, or lack thereof, of people with disabilities. That is one of the reasons I became a radio producer at The Chicago Lighthouse. More than 61 million Americans (25% of the total population) identify as having a disability, but too often our stories are portrayed as either tragic or tearjerkingly inspirational. I want them to be accurate and informative.

Since 1906, The Lighthouse has advocated for inclusion and accessibility for all. This year, we added a huge megaphone to those efforts thanks to a partnership with WBBM Newsradio, the top-rated news station in Chicago. "The Disability Minute," produced in The Chicago Lighthouse's fully-accessible studio by people who are blind, fills a void that has been severely lacking in our media landscape.

Our segments have covered everything from the inclusion of people with sensory processing disorders to accessibility services at Chicago's many music festivals. When Gov. J.B. Pritzker issued an executive order barring the State of Illinois from doing business

with companies that pay people with disabilities less than the minimum wage, we were the only media outlet granted an interview to explain why the order was both good policy and good business.

I, along with my colleagues Ben, Kalari, and Maureen, do not take this opportunity for granted. Our work researching, writing, and producing these weekly segments not only demonstrates that we are competent and capable, it provides a vital service for our community. By highlighting the information and resources available for people with disabilities, we are fulfilling a need for a population that is all too often overlooked, and we are making our presence known.

Journalism is the practice of telling stories in service of creating social change. It is a chance to illuminate different perspectives. Thanks to "The Disability Minute," **We have been exposed to thought-provoking points of view that we would not have otherwise encountered. We are learning new digital media production and storytelling techniques, and we are telling stories that will lead to greater understanding and empathy for all people with disabilities. We cannot think of a better way to serve our community.**



"The Disability Minute" production team: (l. to r.) Ben Chagot, Sandy Murillo, Kalari Girtley-Jackson and Maureen Reid are pictured in the Chicago Lighthouse Media studio, along with Ben's guide dog, Sammie, and Maureen's guide dog, Gaston.



Creating Opportunities

Lighthouse's DAX Team and UI Health Open Doors for People with Disabilities

In 2018, the University of Illinois Hospital and Health & Health Sciences System opted to adopt Epic to handle its scheduling services. The switch would provide better communication and access among UI Health's various medical departments, saving countless hours for both patients and staff. There was only one small issue: the software was not fully accessible across its scheduling workflow for users who were blind or visually impaired.

As a longtime client and partner of The Chicago Lighthouse's social enterprise call centers, full accessibility for users who are

blind was critical to UI Health. "This is a partnership," says Kay Soto, retired Director of UI Health Call Centers who helped to set up the call centers at The Lighthouse. "We have something special here."

The solution came in the form of another Lighthouse offering, the Digital Accessible Experience consultancy (DAX). Launched in 2019, DAX employs accessibility-certified IT professionals, who are blind, to help companies and other organizations ensure their digital interfaces are optimized for people with visual impairments.

For DAX, accessibility works best when it is incorporated in the design stage (rather



than laid on as retrofitted patches). The DAX team worked side-by-side with Epic software developers and implementers shadowing call center employees to determine how to optimize the product's workflows for The Lighthouse's employees with visual impairments. Among the changes were adding headings to fields for clearer navigation, integrating keyboard shortcuts, and removing unnecessary menu items.

After extensive testing by DAX and other Lighthouse staff members, Epic's accessible-optimized software launched last year, immediately opening up opportunities for people who are blind or visually impaired. Since its launch with UI Health, employees with visual impairments have scheduled more than 2,000 appointments, and 30 call center employees have been promoted to "Medical Scheduler."

DAX's work with UI Health and Epic, which will open up opportunities for people with



EVERY TIME A COLLEAGUE CHANGES THEIR TITLE TO 'MEDICAL SCHEDULER,' IT MAKES MY DAY. WE MADE THAT HAPPEN!

—JOSE MARTINEZ | DAX LEAD ANALYST

visual impairments around the world, demonstrates how The Lighthouse's programs work together to improve the lives of everyone involved. "Our call center agents now have workstations that grant them equal access as their sighted peers," says DAX Lead Analyst Jose Martinez. "Every time a colleague changes their title to 'Medical Scheduler,' it makes my day. We made that happen!"



OPPOSITE: Digital Accessible Experience (DAX) consultants: (l. to r.) Giovanni Bahena, Jose Martinez and Juan Gonzalez. **LEFT:** Thanks to the work of our DAX team to optimize the Epic software for users who are blind or visually impaired, Kendra White was promoted to Accessibility Support Specialist (pictured with her supervisor, Chenita Jackson). **RIGHT:** Ben Chargot (left, seated) recently transitioned from Medical Scheduler to DAX Project Coordinator, where he supports Phil Yatvin (right, seated), Senior Director, Chicago Lighthouse Industries, and the rest of the team in developing and maintaining partnerships.

ALL IN THE Family

Helping People with Vision Care Across Generations



ABOVE: Four Generations of Ophthalmologists: (l. to r.) Dr. Emil Deutsch (circa 1922), Dr. William Deutsch, Dr. Thomas Deutsch, and Dr. Rebecca Deutsch Sarran.

THE DEUTSCH FAMILY—Though his father and grandfather were both ophthalmologists, Dr. Thomas Deutsch says he never felt any pressure to become one himself. Nonetheless, he saw the advantages. “I came home and had dinner every night with someone who clearly loved what he did,” Tom says.

So, when the time came for Tom to select a medical specialty, the choice was obvious. In addition to the family predisposition to the practice, ophthalmology offered opportunities to see near-immediate results of his work with patients. “I looked at all the different specialties and kept getting drawn back to ophthalmology,” he says.

A generation later, Tom’s daughter, Dr. Rebecca Deutsch Sarran, drew upon a similar sentiment when choosing her own medical specialty. “Like my dad, I had a first-hand daily view of someone who loves what he does,” she says. “And everyone is so smart and hardworking in this field.”

They are also dedicated to their communities. **When he was invited to join The Lighthouse’s Board, Tom accepted after asking for advice from his father (who had served on the boards of several organizations over his career), who said: “Whenever someone asks you to help, if you can give that help you should say yes. Then, you should be fully committed to it.”**

Rebecca one day hopes to serve on medical and charitable boards like her father and grandfather. Now is not that time, however. In addition to building her ophthalmologic career, she and her husband are the parents of a young boy, born in 2020.

Will her son represent the fifth generation of Deutsch ophthalmologists? Time will tell. “He hasn’t decided yet if he’s going to be an ophthalmologist,” Rebecca says. “It will be interesting to see what his perspective is.”

THE KRAFF FAMILY—With two current and two retired ophthalmologists sitting around the table, one might imagine Kraff family gatherings to be filled with debate about the latest eye-care procedures. Fortunately, that is not the case.

“We generally don’t disagree ophthalmologically, though we may disagree on other things,” says Dr. Cheryl Kraff-Cooper, who along with her brother, Dr. Colman Kraff, works at the Kraff Eye Institute in Chicago, which was founded by their father Dr. Manus Kraff. (The fourth member of the family is retina specialist Dr. Caryn Orlin Kraff, who recently retired.)

With its combination of medical care and surgical treatment, ophthalmology is an opportunity to change peoples’ lives, Dr. Kraff-Cooper says. “Vision is so important for independence,” she says. “Helping people with limited vision see even just a little bit more has been particularly rewarding.”

Beyond their work treating vision, the Kraffs are deeply involved in The Chicago Lighthouse. Manus sits on The Lighthouse’s Board. Cheryl has been a member of our Associate Board for more than 30 years, where she has served as president, correspondence secretary, volunteer coordinator, and chair of the Board’s House and Garden Walk several times. Colman’s wife, Julie, has also served on our Associate Board for more than 30 years.

The Kraff’s connection to The Lighthouse is now extending into the third generation, as Dr. Kraff-Cooper’s daughter, Allie Davidson, has been a member of the Associate Board for the past several years. Though she is not an ophthalmologist like her mother, uncle, aunt and grandfather (she is a reading specialist), Allie’s exposure to the issues surrounding low vision made the board a natural fit.

“Growing up around so many eye-care professionals, I know how important vision care is,” Allie says. “I’m thrilled to continue upholding our family legacy with The Lighthouse.”



The family behind the Kraff Eye Institute: **FRONT:** Dr. Caryn Orlin-Kraff (retired), Dr. Cheryl Kraff-Cooper. **BACK ROW:** Dr. William Lissner (retired), Dr. Manus Kraff (retired), Dr. Colman Kraff.





LEFT: Vince Foglia. **ABOVE:** A rendering of “The Foglia Residences,” which will offer accessible and affordable apartments for people with disabilities and Veterans.



Building the Future, TOGETHER

Donor Support Provides
Momentum for Future Projects

THE FOGLIAS—In addition to our invaluable staff, volunteers, and clients, our work is not possible without our fantastic donors and supporters. In 2021, two generous families made significant contributions to further help people to live independently and with confidence.

In spring of 2022, we will break ground on a building that will include 76 fully accessible, affordable apartments for people with disabilities and Veterans. “The Foglia Residences” will be named in honor of Lighthouse supporters,

Vince Foglia, his wife, Pat, and their family. As the founder of a medical device manufacturing company, Vince previously spent a great deal of time in the Illinois Medical District. They are also the parents of a son who is visually impaired. This and more inspired the Foglias to make an extremely generous gift to help support the new residences. We thus named the new residences in the Foglia family’s honor.

“It is my pleasure to partner with The Lighthouse to create new opportunities

for independence for people with disabilities and Veterans,” Vince says. “I can’t wait to see these new apartments and how accessible they will be. I am honored that this amazing initiative will have our family’s name on it!”

THE HUBERS—Longtime Board Member and donor David Huber also has a deep connection to The Lighthouse’s mission, as he experienced vision loss due to a detached retina. His empathy with the visually impaired community inspires his involvement with our organization.

As a testament to David’s dedication to advancing our work, he and his wife, Nancy, made a fantastic gift to our Glenview facility, Chicago Lighthouse North (located at 222 Waukegan Road). **Lighthouse North will now be named “The Chicago Lighthouse Huber Vision Rehabilitation Center” in his and his family’s honor.**

For David, this wonderful gift is his way to help countless people receive the low



I KNOW FIRST HAND WHAT PEOPLE WITH DISABILITIES CAN ACHIEVE, IF GIVEN THE RESOURCES AND OPPORTUNITIES TO DO SO.

—DAVID HUBER

vision care and rehabilitation they need to maximize their remaining vision and live independently. “As someone who is visually impaired and was still able to establish his own business, I know first hand what people with disabilities can achieve, if given the resources and opportunities to do so,” he states proudly.

Thank you to the Foglia family and to David and Nancy Huber! We are grateful for your incredible partnership and support.



Board Member David Huber and his wife, Nancy, address the audience at our 2021 Seeing What’s Possible Gala after being honored with our “Beacon of Light” Award.

PIONEERING THE FUTURE

Groundbreaking
Programming Offers
New Perspective of Vision Care

Our approach to low vision care has always been all-encompassing, helping patients to maximize their vision and succeed in all areas of life. As we continue to respond to the evolving needs of our community, we are focusing on addressing the causes of vision loss and empowering patients to play a more active role in their care.

Diabetic eye disease is the leading cause of blindness in the United States. According to a study performed by UI Health, the diabetes rate is as high as 37% in some Chicago neighborhoods, particularly those surrounding The Lighthouse. To help close the gap in access to preventative care, **our Research Team has partnered with Chicago Cares to Prevent Diabetes to administer a free, CDC-certified program teaching people who are at-risk of type 2 diabetes to develop healthy lifestyle changes.**

**I TOOK THIS OPPORTUNITY
AS A WAY TO GAIN MORE
ACCOUNTABILITY FOR MY
HEALTH.**

— NATASHA | PROGRAM PARTICIPANT

Participants of the program meet virtually as a group on a weekly basis with a trained lifestyle coach to discuss goals and strategies for weight loss and physical fitness. “By learning how to live a healthier lifestyle, they’re avoiding not just the onset of diabetes, but the complications that go along with it, including vision loss,” says Dr. Patricia Grant, Vice President of Research and Program Lead.

Dr. Kara Crumbliss, Optometrist and Senior Vice President of Clinical Services, and Dr. Patricia Grant, Vice President of Research, are pictured in our Low Vision Clinic.

“I took this opportunity as a way to gain more accountability for my health,” says program participant Natasha. “It’s been great to learn about healthy eating and exercising.”

A key element of the program’s success is the support that participants receive from one another. “If you’re experiencing a problem or feel like you’ve had a setback in your progress, you have a community of people working with you to find solutions and helping you accomplish your goals,” says Dr. Grant.

To further help our community prevent diabetes-related eye disease, we recently launched a Diabetic Teleretinopathy Screening Program, providing free eye screenings. Data suggests that only half of diabetics are receiving routine eye care. The program is helping us to reduce rates of blindness in the city as we can detect eye diseases early, when treatment options are still available.

Another way our low vision research team is helping to enhance care is by contributing to the research and develop-

ment of a telehealth platform called the Digital Vision Clinic by IrisVision Global. The Digital Vision Clinic may allow vision care providers to measure a patient’s visual acuity, visual field, and contrast sensitivity remotely on their newly released device, Inspire. Patients can also use the device to connect to their providers on a web-based portal for telehealth visits. “Through this technology, we may be able to track vision daily and learn about patterns of visual fluctuation and changes in visual function,” says Dr. Kara Crumbliss, Senior Vice President of Clinical Services.

The device may break barriers to care, such as transportation, by allowing doctors to test and monitor vision while patients are at home. The device may also allow for “improved exam efficiency for in-person appointments by allowing patients to self-administer some vision tests while waiting to see their doctor,” says Dr. Crumbliss. Drs. Grant and Crumbliss look forward to the many possibilities this technology may provide to improve the efficiency, convenience and quality of our care.



Natasha, a participant of our new Diabetes Prevention Program, credits the program for helping her make healthier choices.



The Digital Vision Clinic by IrisVision Global may allow vision care providers to administer vision tests remotely to patients through a wearable device.



OPPORTUNITY FOR ALL

RESEARCH

INDEPENDENT LIVING

REHABILITATION

SOCIAL ENTERPRISE

EDUCATION

The 'Beautiful Form' of Opportunity for All

RESEARCH: The Chicago Lighthouse is serving as the evaluation center for a clinical trial of an Intracortical Visual Prosthesis (ICVP). The ICVP is a group of wireless implants designed by researchers at the Illinois Institute of Technology that may restore some light perception to people who are blind.

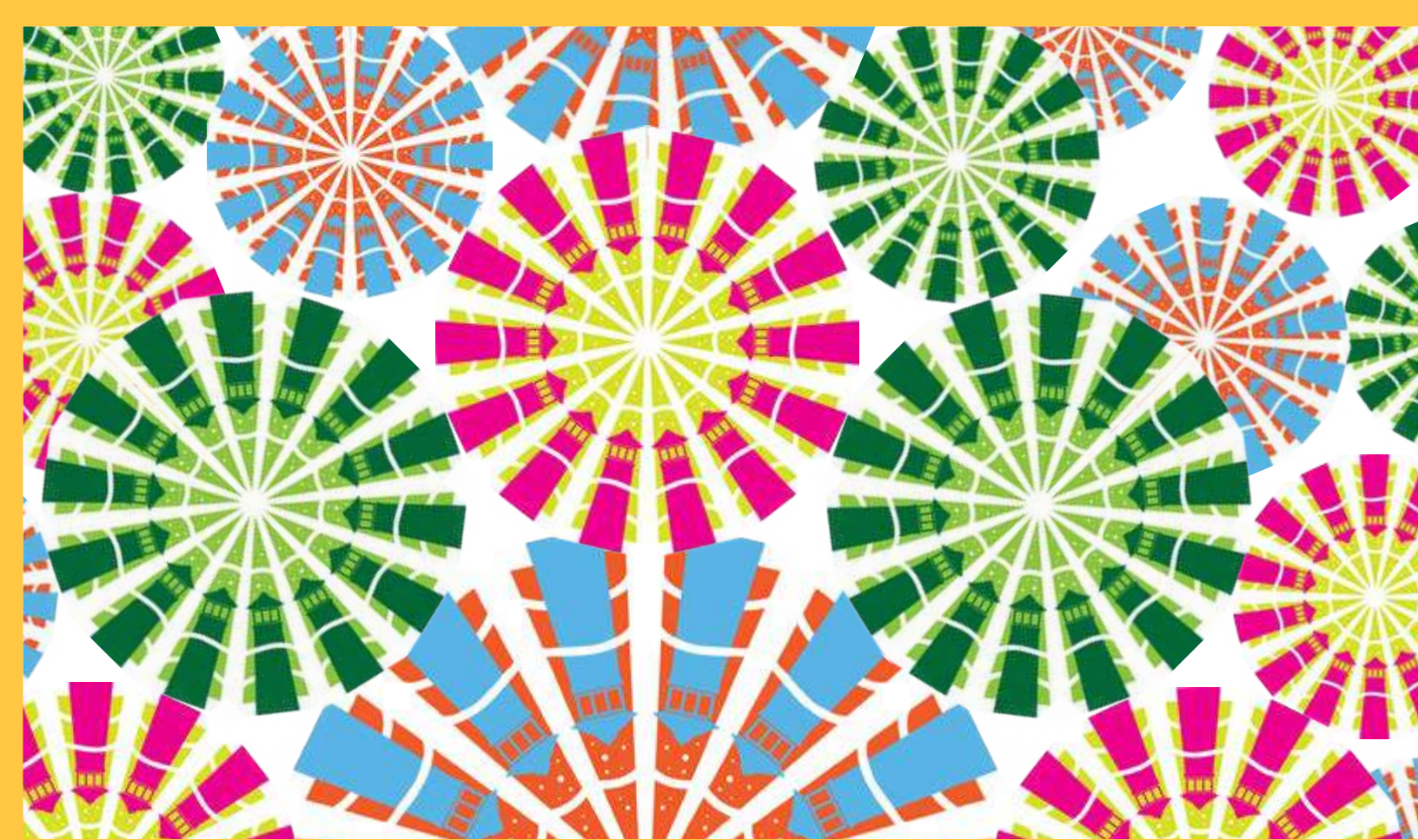
INDEPENDENT LIVING: Participants in our Adult Living Skills Program were thrilled to return to The Lighthouse after nearly 18 months away due to the COVID-19 pandemic. Our Program is the only service in Illinois that helps adults with intellectual disabilities who also have visual impairments learn life skills and develop a peer network.

REHABILITATION: Our Forsythe Center for Comprehensive Vision Care helps people understand their diagnoses and treatment, maximize their remaining vision, and learn to live independently through Assistive Technology and other accommodations. More than 3,700 patients visited our Low Vision Clinics and ancillary services in FY21.

EMPLOYMENT: The Chicago Lighthouse has been empowering people through employment since 1922. Our Job Counselors placed approximately 425 people, including individuals with disabilities and Veterans, in jobs last year. In addition, they provided more than 250 people with workplace development training, including instructing people with disabilities about using assistive technology in the workplace, resume crafting, and participating in mock interviews.

EDUCATION: In addition to becoming kindergarten-ready, every student in our Judy and Ray McCaskey Preschool learns how to read Braille, as well as the importance of empathy. Our students and teachers were thrilled to return to the classroom in FY21 to share story time and other lessons in-person.

SOCIAL ENTERPRISE: Thanks to work completed by The Lighthouse's Digital Accessible Experience (DAX) consultants, Kendra (pictured) is now training others to schedule appointments using Epic, the world's most widely-used and comprehensive health records software. As a result of our partnership with UI Health, DAX consultants—all of whom are blind—worked side-by-side with Epic programmers to ensure the platform was optimized for users with all types of visual impairments.



PLANNED GIVING



MILTON J. SAMUELSON SOCIETY MEMBERS

Friends who have remembered The Chicago Lighthouse in their wills or estate plans or who have made another type of planned gift.

Anonymous (80)
 Steven and Pamela Adelman
 Rick and Patricia Berlet
 Dominic Calabrese
 John Cardiello
 Franklin and Doralu Chanen
 Helen Collins
 Sandi Dorst
 Susan and Noel Elfant
 Melvin B. Franklin
 Andrzej and Marian Gerlach
 Richard Greenberger
 Bruce and Jamie Hague
 Sandra Horwitz

Lorraine Jacobsen
 Ed Jepson and Dr. Susan Sicotte
 Lillian Joerger
 Dr. Joel and Roberta Kaplan
 James and Barbara Kesteloot
 Lois Kline
 Carl and Margarete Konrath
 Davida Levy
 Cathy Lindfors
 Lee H. Martin
 Judy and Ray McCaskey
 Jennifer and Steve Miller
 John and Winifred Morris
 Donald G. Morrow

William Paullin
 Jeanette Peter
 Kathleen Peter
 Patricia Rees and
 Patrick Romanchek, Sr.
 Paul W. Rink
 Leonard Rodriquez
 Ramona C. Samuelson
 Arturo and Janette Saenz
 Richard and Patricia Schnadig
 Ann Scher
 Drs. Janet P. Szlyk and Jeffrey Jackson
 Lila Tankus

For information about making a planned gift to The Chicago Lighthouse, please contact Todd Gray, Chief Advancement Officer, at (312) 997-3664 or email todd.gray@chicagolighthouse.org. If you have remembered us in your will or estate plan, please let us know so that we may properly honor you!

LIFETIME DONORS

\$1,000,000+

Anonymous
 The Chicago Community Trust
 The Chicago Lighthouse Associate Board
 Mr. and Mrs. Charles L. Barancik*
 The Foglia Family Foundation
 Sandy and Rick Forsythe
 Julius N. Frankel Foundation
 Mr. Corwith Hamill*
 Conrad N. Hilton Foundation
 David and Nancy Huber
 Mrs. Beatrice C. Mayer*
 Mazza Foundation
 North Suburban Healthcare Foundation
 Polk Bros. Foundation
 Robert R. McCormick Foundation
 United Way of Metropolitan Chicago
 Wohlers Family Foundation

\$500,000-\$999,999

Mrs. Lindy Bergman*
 The Berner Charitable and Scholarship Foundation
 The Boeing Company
 Crown Family Philanthropies
 Elizabeth Z. Drew Trust
 Bruce and Jamie Hague
 Carrye & Abraham S. Hart Fund
 The Healthcare Foundation of Highland Park
 Arthur O.* and Esther O.* Kane
 Kresge Foundation
 Mr. and Mrs. Marvin Lader
 Mrs. Tina Lavezzorio*
 Judy and Ray McCaskey
 Fred Mickina Estate
 Microsoft Corporation
 Irvin Newgren Trust
 Mr. and Mrs. Steven N. Pangere
 Dr. Scholl Foundation

\$250,000-\$499,999

Anonymous (3)
 The Barker Welfare Foundation
 BlueCross and BlueShield of Illinois
 Larry* and Susanne Broutman
 Fred J. Brunner Foundation
 JPMorgan Chase Foundation
 Cless Family Foundation
 Exelon Corporation
 The Foundation Fighting Blindness
 Lloyd A. Fry Foundation
 Ralph Juchcinski Trust
 Dr. and Mrs. Joel A. Kaplan

Lions Clubs International Foundation
 George Martin Sus Trust
 Arthur R. Metz Fund, Globe Foundation
 Ann and Walter* Nathan
 Edmond and Alice Opler Foundation
 PERT Foundation
 The Retirement Research Foundation
 Anita Swanstrom Trust
 Dollie Swarts Memorial Trust

\$100,000-\$249,999

Anonymous (4)
 Lester and Edward Anixter Foundation
 Assurance Agency, Ltd.
 Mr. Bernard J. Beazley*
 Chester Bialczak Trust
 The Blowitz-Ridgeway Foundation
 BMO Harris Bank
 William* and Rita* Bold
 BP Amoco, PLC
 Helen Brach Foundation
 Bridgeview Bank Group
 Mr. and Mrs. Franklin A. Chanen
 CIBC Bank
 Mr. Robert W. Clarke
 Mrs. Rosanne Cohen
 Lions John and Pat Coleman
 CompTIA Educational Foundation
 CSX Corporation
 The Patrick and Anna M. Cudahy Fund
 Dr. and Mrs. Thomas A. Deutsch
 Ernst & Young LLP
 Henry Erskine, Jr. Marital and Family Trust
 The Field Foundation of Illinois
 First Nonprofit Foundation
 Robert W. Galvin Foundation
 Mrs. Mary B. Galvin
 The John S. and Christine S. Gates Charitable Trust
 Mr. H. Dennis Giertz
 Max Goldenberg Foundation
 Goldman Sachs & Company
 The Robert J. Gunterberg Charitable Foundation
 The Leo S. Guthman Fund
 Hamill Family Foundation
 The Irving Harris Foundation
 Frederick E. & Ida H. Hummel Foundation
 Evelyn L. Kilker Trust
 Marjorie Klecar Trust
 Mr. and Mrs. Carl Konrath

Dr. Manus C. Kraff
 Mr. Donald W. Krumrey*
 Ms. Shirley Langridge*
 Mrs. Mary E. Liebman*
 Elick and Charlotte Lindon Charitable Trust
 Lions of Illinois Foundation
 Irma Lobe Trust
 Locke Lord LLP
 McDonald's Corporation
 Michael Reese Health Trust
 The Elizabeth Morse Charitable Trust
 Elizabeth Morse Genius Charitable Trust
 The Northern Trust Company
 Northern Trust Foundation
 The Reader's Digest Partners for Sight Foundation
 Michelle and Gary Rich
 Ronald McDonald House Charities, Chicagoland & NW Indiana
 Carl H. Sandin Trust
 Mr. and Mrs. Richard H. Schnadig
 The Siragusa Family Foundation
 Mr. Milan Sluka*
 Smith Barney Citigroup, Inc.
 Special Kids Foundation
 The Edward S. Sprague Foundation
 Mr. and Mrs. James Steinback
 Roger* and Susan Stone
 Drs. Janet P. Szlyk and Jeffrey M. Jackson
 Target Corporation
 Topfer Family Foundation
 William Keith Turner Trust
 Abbie E. Tyrrell Fund
 Mrs. Lois Unell
 Union Pacific Foundation
 Mr. Theodore M. Utchen*
 Wilczynski Trust
 Richard H.* and Diane* Wille
 William Blair & Company Foundation
 Ethel Wiseman Trust
 George H. Zendt Charitable Trust

* Deceased

THE CORWITH HAMILL SOCIETY

The Corwith Hamill Society honors and recognizes our long-term donors. Gold is for 20 or more years of continuous giving; silver is for 15 and bronze is for 10.

GOLD LEVEL (20+ YEARS OF CONTINUOUS GIVING)

Anonymous (4)
Mr. and Mrs. Steven H. Adelman
Mr. Joseph B. Annenberg
Dr. and Mrs. Alan J. Axelrod
Mrs. Haley L. Baer
Ms. Sarah J. Baker
The Barker Welfare Foundation
Mrs. Lynn Barnett
Mr. and Mrs. Kenneth Bauske
Mr. Thomas R. Bell
Mrs. Rita B. Benesch
Mr. and Mrs. Mark H. Berens
Mrs. Susan Berk
Mr. and Mrs. Rick Berlet
The Berner Charitable and
Scholarship Foundation
Mrs. Violet Berta
Mr. and Mrs. Jerzy Blazejowski
Mrs. Jill Bleiman
The Boeing Company
Mr. and Mrs. Abraham Bohrer
Mr. and Mrs. Albert H. Bolger
Mr. and Mrs. Howard J. Bolotin
Mrs. Gail B. Boorstein
Mr. Norman A. Brabec
Ms. Nena Bradshaw
Mrs. Karen A. Brenner
Miss Judith C. Brinkman
Fred J. Brunner Foundation
Mr. John C. Buddig
Mr. and Mrs. William R. Buecking
Mrs. Nancy Burstyn
Mr. and Mrs. Arthur Callistein
Central Lions Club of Chicago
Central Steel & Wire Company
Mr. and Mrs. Franklin A. Chanen
Mr. John D. Chaney
Mrs. Burnetta Cloos
Ms. Debra L. Cohen
Mrs. Lynn Cohen
Mrs. Rosanne Cohen
Mr. James Coleman
Mrs. Jane B. Colman
Mrs. Elizabeth E. Copeland
Mrs. Marian M. Costello
Mrs. Muriel L. Cowen
Mr. Joseph J. Crickard
Ms. Michelina D'Agostino
Dr. and Mrs. Thomas A. Deutsch
Mrs. Patricia A. DeWolf
Mr. Vincent Dina
Mr. Leo J. Domzalski
Mr. Tom Donegan
Mr. and Mrs. Denis Dywan
Mr. and Mrs. Keith Edmonson
Mr. and Mrs. Stephen Eich

Mr. Terry Elliott
Ms. Lucy P. Evans
Mr. Thomas W. Fahy
Ms. J.A. Fellows
Mr. Sam W. Fiarman
Rocco Fiore & Sons Inc.
Mr. August Fischer, Jr.
Mrs. Ava L. Fogel
Mr. Bruce W. Foudree and
Ms. Suzanne Reade
Julius N. Frankel Foundation
Mr. and Mrs. William J. Frankel
Ms. Isabel E. Franzen
Mr. and Mrs. Franklin K. Fredriksen
Mrs. Jo Ann Galston
Mr. H. Dennis Giertz
Mrs. Jan Gilberg
Mr. and Mrs. Scott Gilbert
Mrs. Kris A. Glicken
Max Goldenberg Foundation
Goldman Sachs & Company
Mrs. Nancy Grayheck
Ms. Louise E. Grieshaber
Mr. and Mrs. Eston M. Gross
Mr. Robert R. Gross
Mr. Adolph J. Habich
Hamill Family Foundation
Mr. Richard P. Hamlin
Mr. and Mrs. Ernst K. Heimann
Mrs. Diane Heller
Mr. and Mrs. Robert F. Hilliard
Dr. and Mrs. Arnold Hirsch
Mr. and Mrs. Richard M. Hirsch
Mrs. Barbara R. Hollenberg
Ms. Mary K. Howe
Mrs. Pamela M. Hoxsey
Ms. Helen Jahnke
Mr. and Mrs. Jerry Januszewski
Mrs. Judith Kahn
Dr. and Mrs. Joel A. Kaplan
Mr. and Mrs. Max S. Kasper
Mrs. Jill Katlin
Mr. and Mrs. Michael C. Keenan
Mr. and Mrs. James M. Kesteloot
Mrs. Heidi Kirsch
Mr. and Mrs. Carl Konrath
Mrs. Janice A. Korn
Mrs. Julie D. Kraff
Mrs. Sondra F. Kraff
Dr. Cheryl Kraff-Cooper and
Mr. Carey Cooper
Ms. Irene Krolis
Mr. Frank R. Krom
Mr. Perry Kupietz
Mr. and Mrs. Robert Lassen
Mr. and Mrs. Daniel G. Lee
Mrs. Deborah Leeb
Mr. and Mrs. Mark H. Leeds
Mrs. Pamela Leslie

Mr. and Mrs. Gary Levenstein
Mrs. Cindy Levy
Mrs. Debra F. Lewin
Mrs. Lynne Green Lieber
Ms. Mary Anne Limbos
Mrs. Patricia M. Livingston
Mrs. Jodi S. Loeb
Mr. and Mrs. Terrence J. Longo
Mr. and Mrs. Arthur A. Malinowski
Mrs. Susan A. Mandell
Mrs. Nina Mann
Mr. and Mrs. Thomas Mazukelli
Mr. Richard H. Medland
Mrs. Monica Mellovitz
Arthur R. Metz Fund, Globe Foundation
Mrs. Sheila M. Moss
Mrs. Shareefah Muhammad
Mr. Marion Musacchio
Mrs. Lynn Muslin
Mr. and Mrs. Frederick J. Nachman
Mr. and Mrs. William North
Edmond and Alice Opler Foundation
Mrs. Jaclyn Patinkin
Mr. Murry Perkins
Ms. Brenda R. Pessin
Ms. Beverly V. Peters
Mrs. Jean Petryniec
Mrs. Karen Gutheim Pinsof
William K. Platt, M.D.
Ms. Blanche M. Raab
Mrs. Susan K. Raskin
Mr. and Mrs. Fred R. Refner
Mr. James G. Ring
Mr. Paul W. Rink, J. D.
Riverside Township Lions Club
Mr. and Mrs. Lonnie Roberts



Corwith Hamill was The Lighthouse's longest continuous donor. When he passed away in 2013 at the age of 99, he had donated to The Lighthouse for the majority of his life. In recognition of Mr. Hamill and his generosity to us, we created a society named in his memory.

Mrs. Harriett Robinson
Mr. Leonard Rodriguez
Mr. and Mrs. Alfred M. Rogers, Jr.
Mrs. Eve Rooth
Dr. and Mrs. Robert L. Rosen
Mrs. Helga Rosenberg
Benjamin J. Rosenthal Foundation
Mr. and Mrs. Warner A. Rosenthal
Mrs. Rochelle D. Rubinoff
Mrs. Alison Salzman
Mrs. Ramona C. Samuelson
Mr. Paul L. Schmelzer
Mrs. Claudia P. Schwartz
Mr. and Mrs. Alan Schwartz
Ms. Sally Schwartz
Mr. and Mrs. Stephen Schwellenbach
Mr. Warren R. Sedlacek
Mrs. Ilene Shaw
Mrs. Geraldine A. Siena
The Siragusa Family Foundation
Mr. and Mrs. Robert Smith
Mrs. Julie L. Smith
Ms. Thomasina Smith
Mrs. Jean C. Sobek
The Edward S. Sprague Foundation
Mrs. Clara Stasior
Mrs. Paula M. Stendel
Ms. Susan Stern
Ms. Eydie L. Sternberg
Mr. and Mrs. William I. Swedler
Mr. Charles A. Tausche
Ms. Dorothy M. Thomas
Mr. Edward J. Thompson
Ms. Lois A. Tortorelli
United Way of Metropolitan Chicago
Mr. Dainius Valiukenas
Mr. Ray Van Dyke
Mr. and Mrs. Steven Walczynski
Mrs. Lois Waller
Mrs. Barbara Walner
Ms. Carole A. Walsh
Mrs. Debbie Warsh
Mr. Edward W. Wavak
Samuel Weinstein Family Foundation
Mr. Robert J. Wendler
Mrs. Gloria Wexler
Mr. Michael P. Whelan
Mrs. Laura P. White
Mr. and Mrs. Howard Wolff
Mrs. Alison Yastrow
Mr. and Mrs. Peter Yastrow

SILVER LEVEL (15+ YEARS OF CONTINUOUS GIVING)

Anonymous (2)
Adreani Foundation
Advanced Sprinkler Systems, Inc.
Shirle Affeldt
Mr. Leroy R. Anderson
Ms. Barbara J. Baer
Mr. and Mrs. Matthew A. Baer
Mr. and Mrs. Rudolf Bajzek
Ms. Diana Baldacci
Mrs. Sue Bergen

Mrs. Jennie Berk
Bloomingdale Lions Club
Ms. Carlene M. Blumenthal
Mr. and Mrs. David Brint
Dr. Steven U. Brint
Scott Byron & Company
Mr. Dominic Calabrese
Mr. and Mrs. Bernard J. Campbell
Carol J. Carl
Mrs. Linda Carpenter
Mr. and Mrs. Walter S. Carr
Mr. and Mrs. Robert Carroll
Chicago Mexica Lions Club
Mrs. Lois Chudacoff
Mr. Ali Cinar
Ms. Marcia E. Cohen
Lions John and Pat Coleman
Kara Crumbliss, O.D.
Mr. Rick M. Daitchman
Davis Imperial Cleaners, Inc.
Mr. Al Dorevitch
Mr. and Mrs. Richard M. Doub
Mrs. Carmen E. Fair
Ms. Leslie G. Finkle
Mr. and Mrs. Jon W. Fisher
Dr. and Mrs. Gerald A. Fishman
Mr. George V. Fluks
Dr. Andrew W. Forrester
Fox River Grove Lions Club Inc
Mrs. Debbie S. Frank
Dr. Kelly A. Frantz and Mr. Karl J. Frantz
Ms. Lynn Froy
Mr. and Mrs. Richard V. Furnari
Mrs. Constance J. Galliard
Elissa Geier, Psy.D.
Mr. and Mrs. George M. Gogola
Mrs. Gerylyn A. Greenberg
Ms. Ellen F. Gross
Mrs. Sheila H. Gutman
Mr. and Mrs. William R. Hagedorn
Harris and Harris LTD
Mrs. Gayle Harris
Mr. and Mrs. Matt Hart
Ms. Nancy Hartman
Ms. Juanita L. Jefferson
Mr. Thomas R. Johnston
Ms. Liane J. Joseph
Mr. Keith A. Kebernik
Dr. Manus C. Kraff
Ms. Edith Kubas
La Grange Highlands Lions Club
Mr. and Mrs. Emerson W. Lacey, Jr.
Mr. and Mrs. Marvin Lader
Mrs. Alyce I. Lang
Mr. and Mrs. Joseph A. Lasky
Mrs. Julie L. Lehrman
Mrs. Andrea W. Leshem
Mrs. Lorrie Levitz
Mr. and Mrs. Thomas E. Livingston
Mrs. Tamara Lorber
Mr. and Mrs. David J. Malina
Mr. Randy Markowitz
Mr. and Mrs. Raymond McCaskey
Mr. R. V. McGrath
Mr. and Mrs. William McNally

Mrs. Penny Meyers
Ms. Margaret M. Michalski
Midwest Truck & Auto Parts, Inc.
Mr. and Mrs. Edward Mizicko
Mrs. Gloria G. Morison
Ms. Myrna Natkin
Mr. James E. Neuhauser
Northwest Lions Club
Mr. Patrick W. O'Leary
Ms. Amy W. Olswang
Ms. Joan L. Oslan
Mr. and Mrs. Charles Perlman
Mr. Pasquale Perrone
Mrs. Jeanette S. Peter
Mrs. Debbie Piolet
Mrs. Francine Pine
Ms. Deloris Pinkney
Polk Bros. Foundation
Ms. Susan Kushner Pollack
Mr. and Mrs. James E. Pushaw
Mrs. Lynn C. Razowsky
Mr. and Mrs. Robert C. Rheinheimer
Mr. Allen J. Rogers
Mr. David A. Ross
Mr. and Mrs. Robert N. Rourke
Mr. and Mrs. Lawrence P. Rowells
Mr. and Mrs. David Rushing
Mr. and Mrs. Joseph Samuels
Mr. and Mrs. Robert C. Sana
Mrs. Marjorie Sandlow
Ms. Marika O. Schaefer
Mr. James W. Schmitt
Ms. Linda G. Schub and
Mr. Jay Wightman
Richard A. Shapiro, M.D.
Mrs. Roslyn C. Sheppard
Mrs. Melissa Silverman
Mr. and Mrs. Richard P. Small
Rabbi Steven Lowenstein and
Mrs. Julie Stark-Lowenstein
Mr. and Mrs. Irvin M. Stein
Mr. and Mrs. Ronald A. Stepp
Mr. and Mrs. Phillip L. Stern
Mrs. Mindy B. Sterns
Mr. Warren G. Stober
Mrs. Julie Stracks
Drs. Janet P. Szlyk and
Jeffrey M. Jackson
Ms. Anna L. Thomas
Mr. John L. Toboja
Mr. Don Toy
Ms. Susan Ulaszek
Mr. and Mrs. Donald J. Vilim
Mrs. Sheila G. Wexler and
Mr. Philip Block
Willow Springs Lioness Club
Mr. Harvey W. Wittenberg
Mr. and Mrs. James P. Young
Mr. and Mrs. Jerrold H. Zar
Ms. Helene S. Zarccone
Dr. and Mrs. Simon Zimnowodski

BRONZE LEVEL
(10+ YEARS OF CONTINUOUS GIVING)

Anonymous (2)
Ms. Letty Abel
Mr. and Mrs. William Abrams
Ms. Mary Abramson
Mrs. Debora P Aghion
Ms. Janet L. Ahrensfeld
Alden Management Services
AL-TY Corporation (Norton's Restaurant)
Andrea and Richard Amend
Mr. and Mrs. Breman Anderson
Mr. and Mrs. Robert G. Anderson Jr
Mr. and Mrs. John S. Anthony
Art Optical Contact Lens, Inc.
Mr. and Mrs. Peter M. Ascoli
Assurance Agency, Ltd.
Mr. and Mrs. Donald A. Belgrad
Dr. and Mrs. Ira J. Bernstein
Mr. and Mrs. Philip Blackwell
Marcia E. Blake, O.D.
Mr. and Mrs. Donald Blakey
Ms. Susan Block
Mrs. Ruth Goodman Blum
Helen Brach Foundation
Mr. Preston Bricker
Brinshore Development, LLC
Ms. Elaine Britton
Ms. Anne L. Buda
Mr. Robert F. Callbeck and Ms. Margaret L. Waverly
Mr. Michael D. Carey
Mr. and Mrs. William T. Carey III
Ms. Carol L. Carr
Mr. and Mrs. Joseph M. Carroll
Harry F. & Elaine M. Chaddick Foundation Inc.
Lion John C. Chisum
Mr. Robert W. Churchill
Ms. Alexandra Churma
Clarendon Hills Lions Club
Mr. Robert W. Clarke
Ms. Michelle Clyne and Mr. John Paprocki
Ms. Anida Johnson "Cookie" Cohen
Dr. and Mrs. Michael Conrad
Mr. and Mrs. Robert L. Cormier
Mr. and Mrs. Noel P. Cusick
Mr. Michael A. Davis
de Giulio kitchen design, inc.
Russell and Frieda De Yong Foundation
Mr. and Mrs. Robert O. Delaney
Ms. Barbara Desmond
Ms. Catherine E. K. Diggle
Mr. Charles Diorka
Mrs. Mary D. Disis
District 1-A Lions Clubs
Mr. and Mrs. James E. Drexler
Mr. Albert J. Dru
Ms. Colleen C. Dwyer
Mr. William J. Dzialo
Mr. and Mrs. Joseph Ebster

Mrs. Sally Eide
The Evangelical Lutheran Church of the Good Shepherd
Evergreen Park Lions Club
Family Club Solta
Mr. Nairn Farnsworth
Mr. and Mrs. Edward Filippini
Ms. Phyllis L. Fineberg
Ms. Christine M. Fiorito
Mr. and Mrs. Randolph H. Foster
Mrs. Arlene Frommer
Ms. Joan T. Gagen
Mrs. Janet R. Gates
Mrs. Arlene Gellis Segal
Mr. David R. Gerber
Mr. and Mrs. Dean Gerber
Mr. Frank Giglio
Glen Ellyn Lions Club
Mrs. Sheila R. Goldberg
Mr. Arnold Goldstein
Ms. Dianne E. Goren
Grant Thornton LLP
Ms. Beverly Gumola
Mr. and Mrs. Glenn Hagberg
Mr. and Mrs. Bruce R. Hague
Mr. and Mrs. Ernest Hamel
Ms. Karen S. Hammermeister
Ms. Gwendolyn Harris
James M. Harris, O.D.
Mrs. Jeanene C. Hazen
The Healthcare Foundation of Highland Park
Ms. Heather E. Hebbeler
Mr. William Held
Mr. and Mrs. Richard Herman
Mr. Leo F. Hickman
Highland Park Joy Cleaners Inc.
Mrs. Joan Holleb
Mrs. Carol Honigberg
Mrs. Marianne S. Horowitz
Mr. and Mrs. David Huber
Ms. Jayne A. Hultman
Mr. and Mrs. Richard L. Jacobs
Ms. Donna G. Jaggard
Mr. Richard Jankowicz
Mr. R. Razz Jenkins and Prof. Patti Interrante
Mrs. Dolores C. Jilovec
Dr. Mary Kay Johnson
Jolie Maison, LTD
Mr. and Mrs. John C. Jones
Mrs. Jaclyn Joseph
Mr. and Mrs. Reid C. Kanies
Mrs. Cindy Kaplan
Dr. and Mrs. Douglas S. Kaplan
Mr. and Mrs. Robert N. Kaplan
Mrs. Edna Kaucher
Mr. and Mrs. Michael Kearney
Mr. Michael L. Kelly
Keyth Group Companies
Mr. Robert Kim
Mr. and Mrs. Michael J. Kinn
Mr. and Mrs. Philip Kinsella
Mr. and Mrs. Fred Klage, Jr.

Mr. and Mrs. Roger S. Knopf
Gerald A. & Karen A. Kolschowsky Foundation
Ms. Myrna B. Kopin
Ms. Lois Krabec
Ms. Cynthia E. Krch
Mr. and Mrs. Lawrence P. Lanciotti
Mr. Henry L. Latkin
Mr. Steven Laughman
Ms. Shirley Lauriano
Mrs. Kirsten Laurie
Mr. and Mrs. Michael Leaf
Ms. Davida Levy
Ms. Judith R. Levy
Mrs. Laurie F. Lieberman
Ms. Mary Lu Linnane
Mr. and Mrs. Vincent L. Locascio
Locke Lord LLP
Lodge Friendship No. 66 C.S.A.
Mrs. Joan Loeb
Mr. Joseph S. Lushnia
Mrs. Roberta G. Mann
Mr. Robert F. Mantsh
Mariani Enterprises, Inc. DBA Mariani Landscape
Mattingly Low Vision, Inc.
Mr. Mark McGee
Mr. and Mrs. Michael Meehan
Metro Commercial Real Estate, Inc.
Mr. and Mrs. Carl Meyer
Ms. Barbara Miller
Mr. and Mrs. Steve Miller
Mr. and Mrs. Martin Miretzky
Ms. Ericka E. Mixon
Mr. and Mrs. Morton R. Mollner
Ms. Clara S. Moran
Mr. George W. Morris
Dr. and Mrs. Gregory Moss
Mr. and Mrs. Peter C. Moy
Mr. and Mrs. Theodore F. Mueller
Mr. Richard Musson
Mr. and Mrs. Michael Nadler
Naperville Noon Lions Club
Mrs. Ann Nathan
Ms. Mary M. Naughton
Marguerite L. Nelson
Mr. Timothy P. Neylon
Ms. LaVerne A. Nichols
Non Profit Risk Services, Inc.
Mr. Gerald L. O'Donnell
Mr. and Mrs. Brian Oriente
Ms. Julie Overbeck
Mrs. Marla B. Patzik
Mr. and Mrs. James J. Pelts
Mr. and Mrs. Robert Perkins
Ms. Virginia L. Phillips
Ms. Joyce Plecki
Ms. Elizabeth M. Postell
Primex, Inc.
Ms. Nancy Rein
Retina Consultants, LTD
Michelle and Gary Rich
Mr. Lester Rockoff
Mr. and Mrs. Irwin Ross

BRONZE LEVEL (CONT.)

Mrs. Lisa E. Rush
Mr. Frank Russo
Mr. and Mrs. Joseph F. Ruth
Mr. Jack A. Ryan
Mr. and Mrs. Roger Salemi
Ms. Mary Beth Schirmang
Mr. Edward Schmidt
Mr. and Mrs. Richard H. Schnadig
Dr. Scholl Foundation
Mrs. Kim Schwartz
Mrs. Lili Schwartz
Mrs. Roberta Seedman
Mr. and Mrs. Charles Shemely
Mr. and Mrs. David Shine
Ms. Martha Sichau
Mrs. Jody Silverman
Mr. Leonard P. Slotkowski, Jr.
Ms. Mary Jane Smilanik
Mrs. Deborah L. Smith
Mr. and Mrs. Zygmunt K. Sokolnicki
Mrs. Mary Ann Spyrison
Ms. Sharon J. Stanley
Mr. Leonard F. Stein
Mr. Robert L. Stephenson

Mrs. Alison Stolberg
Mr. and Mrs. Robert Stone
Mrs. Kim Strauss
Mr. Thomas Swigart, Jr.
Mr. Kenneth L. Tarnoff
Mrs. Nancy M. Taxman
Mr. Thomas Theodore Thompson Family Foundation
Tinley Park Lioness Club
Mr. and Mrs. Jack Tobias
Mr. and Mrs. Stan Tryba
Mr. Pete and Mrs. Pam Tully
Mr. Eric F. Ulaszek
Union Pacific Foundation
Ms. Lydia Usha
Ms. Shirley A. Vallort
Mr. and Mrs. Edward M. Vitu
Ms. Katherine Wachowski
Mr. and Mrs. Johannes Weertman
Mr. and Mrs. Robert G. Wegner, Jr.
Ms. Dorothy R. Weiskopf
Mr. and Mrs. Ernest E. Werle
Ms. Virginia S. Willcox
Ms. Judith L. Williams
Ms. Karleen Williams

Mr. and Mrs. Michael J. Windle
Mr. and Mrs. Edmund F. Wisz
Wohlers Family Foundation
Mr. and Mrs. Dewey Young
Ms. Jane Ziebart
Ms. Susan Zissman
Mr. Eric F. Ulaszek
Union Pacific Foundation
Ms. Lydia Usha
Ms. Shirley A. Vallort
Mr. and Mrs. Edward M. Vitu
Ms. Katherine Wachowski
Mr. and Mrs. Johannes Weertman
Mr. and Mrs. Robert G. Wegner, Jr.
Ms. Dorothy R. Weiskopf
Mr. and Mrs. Ernest E. Werle
Ms. Virginia S. Willcox
Ms. Judith L. Williams
Ms. Karleen Williams⁺
Mr. and Mrs. Michael J. Windle
Mr. and Mrs. Edmund F. Wisz
Mr. and Mrs. Dewey Young
Mr. and Mrs. Jerrold H. Zar
Ms. Susan Zissman⁺

⁺Denotes those who have either moved up a Hamill Society level or are brand-new to the Hamill Society.

IN-KIND KINDNESS

54kibo
Alice Benjamin Interiors
Leilani Allen
Allyu Spa
Anne Fontaine
Anthony Cristiano
Arthur Murray Dance Studios
BarkBox
Bartucci Salon
Bee Crazy
Benihana
Andrew Berlin
Binny's Beverage Depot
Bluestone Restaurant
Book of the Month Club
BRONCA
Holly Brown
Bucephalus Bikes
Cantigny Golf
Carlisle/ Etcetera
CBR Wood craft
Chalet
Chicago Botanic Garden
Chicago Plastic Surgery Center, LLC
Clare V.
Cresco Stems
CrossTown Fitness
Crystal Cave

Dana Rebecca Designs
Davis Imperial Cleaners
Destination Kohler and Kohler Stewardship
Eli's Cheescake
Erica's Jewelry
FELT
FIRST ASCENT Climbing & Fitness
FLOAT SIXTY
Food For Thought
Foodstuffs
Fumée Claire Candles
George Fourkas
George the Salon
Glenview Car Wash, Inc.
Megan Goldish
Green Bay Cycles
Khalid Hasan
Home Chef
Hub 51
Dave Huber
Implements
David Inglis
IPetChicago
Jane Skin Care Studio
Jayson Home
J&L Catering
John Reilly Photography
Kendra Scott Jewelry

Kimpton Hotel Allegro
Cheryl Kraff-Cooper, M.D.
L'Occitane en Provence
Laudi Vidni
Lauren Lein Ltd.
Leah Chavie Skincare
Lemoncello Brows & Beauty
Lost Mountain Adventure Golf
Lou Malnati's Pizzeria
Mallow Run Winery
Nina Mann
Marchesa Restaurant
Merz Apothecary
Mira Couture
Hanlelore Mui
Music of the Baroque
Nomadic Ant
Northwestern Athletics
Pagoda Red
Pinkalicious Nails & Spa
Planet Paws Pet Club
Portillo's
PRP Wine International
RedE Boutique
River Valley Farmer's Table
Robert Campbell
Portraiture
Roscoe Village Bikes
Elisabeth Roth

Royal Palms Shuffle Board Club
Saks Fifth Avenue
Salon Élan Vital
Sanders Fine Portraits
Scooter's Frozen Custard
Serena & Lily
Shred415
St. John Boutique
Janet P. Szlyk, Ph.D.
The Drake Hotel
The Field Museum
The Glen Club
The Homestead Resort
Tiziana Terenzi
Tokyo Nails
Tory Burch
Trish McEvoy
Tufano's Vernon Park Tap
Underthings
Weller Dental
Willow Room
Wines for Humanity
Wonderful Macha
Susan Young
Zazu Salon
Zzazz Productions

LIGHTHOUSE KEEPERS

The Lighthouse Keepers is a group of special friends of The Lighthouse who annually give \$1,000 or more. We regret we cannot list every donor but we extend our sincere thanks to each each and every one!
(This list reflects cumulative gifts of more than \$1,000 received between July 1, 2020 and June 30, 2021.)

\$250,000 AND ABOVE

Foglia Family Foundation
Mr. and Mrs. David Huber
Peter Wisniewski Trust

\$100,000 - \$249,999

Robert R. McCormick Foundation
William Keith Turner Trust
Wohlers Family Foundation

\$50,000 - \$99,999

Anonymous (2)
The Boeing Company
Cless Family Foundation
Crown Family Philanthropies
The William Randolph Hearst Foundations
Mr. and Mrs. Raymond McCaskey
The Elizabeth Morse Charitable Trust
Michael A. Neigoff Estate
Polk Bros. Foundation
The Reader's Digest Partners for Sight Foundation
Mr. and Mrs. Richard H. Schnadig
Target Corporation
Estate of Ernest F. Ulrich

\$25,000 - \$49,999

Anonymous
The Barker Welfare Foundation
Anne Benson Estate
BlueCross and BlueShield of Illinois
BMO Harris Bank
Mr. Robert W. Clarke
Dr. and Mrs. Thomas A. Deutsch
Family Alliance Foundation
Julius N. Frankel Foundation
Lloyd A. Fry Foundation
The Leo S. Guthman Fund
Leo Krupa Foundation
Mr. and Mrs. Marvin Lader
Charlene Landsberg Smith Living Trust
Mr. and Mrs. Lawrence F. Levy
Mr. and Mrs. Steven N. Pangere
PERT Foundation
Ms. Denise Peterson
Mr. and Mrs. Gary Rich
Savant Wealth Management
Special Kids Foundation
Florence and Laurence Spungen Family Foundation
Dollie Swarts Memorial Trust
United Way of Metropolitan Chicago

\$10,000 - \$24,999

Anonymous (4)
Ackerman Foundation, Inc.

Fred C. and Katherine B. Andersen Foundation
Charles* and Margery* Barancik Foundation
Mr. Paul A. Bartman
The Berner Charitable and Scholarship Foundation
Mr. and Mrs. Abraham Bohrer
Helen Brach Foundation
Mr. Brent Brodeski
Fred J. Brunner Foundation
Paul and Pearl Caslow Foundation
CIBC Bank
Comcast
ComEd
Abe and Ida Cooper Foundation
CSX Corporation
The Patrick and Anna M. Cudahy Fund
D and R Fund
Mrs. Nancy J. Frankenbach
Freeborn & Peters LLP
Ellis Goodman Family Foundation
Ms. Caroline Grossinger
Mr. and Mrs. Bruce R. Hague
Carrye & Abraham S. Hart Fund
The Healthcare Foundation of Highland Park
Hinsdale Junior Woman's Club
Frederick E. & Ida H. Hummel Foundation
Mr. Edward C. Jepson and Dr. Susan Sicotte*
Mrs. Beena Joseph
Dr. and Mrs. Joel A. Kaplan
Mr. Ron Katz and Ms. Cheryl Coleman
Gerald A. & Karen A. Kolschowsky Foundation
Dr. Manus C. Kraff
Henrietta Lange Burk Fund
Lawyers Trust Fund of Illinois
Mrs. Averill Leviton
Ms. Elizabeth Amy Liebman
Elick and Charlotte Lindon Charitable Trust
Mrs. Patricia M. Livingston
Ellen and Todd Martin
Mr. and Mrs. Steven G. Martin
Mazza Foundation
James W. and Frances G. McGlothlin Foundation
Mr. and Mrs. William McNally
Arthur R. Metz Fund, Globe Foundation
Northern Trust Foundation
Edmond and Alice Opler Foundation
Owens Foundation
Mr. Arturo Saenz
Dr. Scholl Foundation

Sea Products
Laura and Adam Selipsky
Mrs. Ilene Shaw
Ms. Alexandra Singer
The Siragusa Family Foundation
The Edward S. Sprague Foundation
The Stahl Family Charitable Foundation
Mr. and Mrs. James Steinback
Mr. Juan J. Suarez Estate
Drs. Janet P. Szlyk and Jeffrey M. Jackson
Mr. Ray Van Dyke
The A. Montgomery Ward Foundation
Windstream

\$5,000 - \$9,999

Anonymous (2)
Adreani Foundation
Mr. MJ Anderson
Ms. Lori Coffey
Mrs. Rosanne Cohen
Lions John and Pat Coleman
Harvey and Ethel Daeumer Foundation
Mr. and Mrs. Noel Elfant
Mr. and Mrs. Ed Fiorentino
Mrs. Susan G. Gohl
Max Goldenberg Foundation
Goldman Sachs & Company
Google LLC
Helen M. Harrison Foundation, Inc.
Harry F. & Elaine M. Chaddick Foundation Inc.
Innovating Worthy Projects Foundation
Mr. and Mrs. James M. Kesteloot
Mrs. Kristine Kinder
Klaff Family Foundation
Dr. Cheryl Kraff-Cooper and Mr. Carey Cooper
Mrs. Angela Lapid
Ms. Cheri Lawrence
Lefkowitz Foundation
Mr. and Mrs. Daniel Lillyman
Locke Lord LLP
Macy's
Mr. and Mrs. Robert Manning
Mrs. Kristina McGrath
Mr. and Mrs. Joseph Moran
Mr. Paul J. Much
Nordstrom
Mr. Patrick J. O'Hara
Pave Works
Mr. and Mrs. Robert Randolph
Mr. and Mrs. John A. Raske
Mr. Paul W. Rink
Benjamin J. Rosenthal Foundation

Mr. Sam Rovit and Ms. Abigail MacKenzie
Sage Foundation
Mrs. Sheree Schimmer
Ms. Sally Schwartz
Mr. and Mrs. Kipling Scott
Charles and M.R. Shapiro Foundation, Inc.
Sirius
Rabbi Steven Lowenstein and Mrs. Julie Stark-Lowenstein
Walgreen Co.
Mr. and Mrs. Dale Wiersbe
Woodward, Inc.
Mr. Michael Zaccaro
George H. Zendt Charitable Trust

\$2,500 - \$4,999

Anonymous
Mr. and Mrs. James Abrams
Albertsons/Osco Drug
Appelbaum Family Foundation
Mr. and Mrs. Donald A. Belgrad
Anne Benson Estate
Mr. and Mrs. Sherwood Bollier
Mr. and Mrs. David Brint
Mr. and Mrs. Joel Bruckman
Ms. Janice A. Clarke
Mr. and Mrs. Geoffrey Cubitt
Mr. and Mrs. Dino Damato
Mr. Vernon R. Duncan
Mr. and Mrs. George M. Gogola
Grant Thornton LLP
Dr. and Mrs. Todd Jensen
JLL
Mr. and Mrs. John C. Jones
Dr. and Mrs. Colman R. Kraff
Mr. and Mrs. Terrence J. Longo
Mrs. Nina Mann
Mr. and Mrs. Michael Meehan
Mr. and Mrs. Robert E. Morrison
Nesko Electric Company
Perkins Coie LLP
Retina Consultants, LTD
Mrs. and Mr. Phyllis Schwartz
Roger and Susan Stone Family Foundation
Abbie E. Tyrrell Fund
Samuel Weinstein Family Foundation
Wendella
Mr. and Mrs. Mark Wolfe
Harold D. and Hazel C. Wright Foundation
Ms. Megan E. Young
Susan Young

\$1,000 - \$2,499

Anonymous (3)
Mr. and Mrs. Steven H. Adelman
Ms. Evelyn Alter
Mr. and Mrs. Ben Applegate
Mr. and Mrs. Peter M. Ascoli
Mr. Motti Attia and Mrs. Aliza Olenick
Mr. and Mrs. John Baker
Mr. James C. Baldwin

Mr. and Mrs. Tom Berg
Peter and Lisa Birmingham
Ms. Valerie M. Block
Mrs. Sherrill Bodine
Mr. Richard R. Boykin
Mr. and Mrs. James E. Bramsen
Ms. Holly Brown
Mr. and Mrs. William R. Buecking
Mr. and Mrs. Walter S. Carr
Mr. and Mrs. Franklin A. Chanen
Mr. and Mrs. Richard M. Chaney
Clarendon Hills Lions Club
Mr. and Mrs. Robert Clifford
Mr. and Mrs. William Cole
Community Foundation of the Fox River Valley
Dr. Michael and Mrs. Virginia Conrad
Mr. Robert Conrardy and Ms. Diane Dygegt
Mr. Mark Cosentino
Ms. H. Joan Costello*
Kara Crumbliss, O.D.
Ms. Angela J. D'Antonio
Darien Lions Club
Delta Building Technologies
Delta Gamma, Chicago North Shore Alumnae
Alex Demond Fund
Mr. and Mrs. Donald D. Duncan
George M. Eisenberg Foundation for Charities
Ms. Alison Faith
Mr. and Mrs. Jon W. Fisher
Ms. Bethany Florek
Mr. John S. Gates, Jr.
Gold Standard Enterprises, Inc. DBA Binny's Beverage Depot
Ms. Patricia Golden and Mr. Steve Grunyk
Mr. and Mrs. Charles Goldman
Albert Goodstein Family Foundation
Mr. Jonathan Grabill
Mrs. Irene Michaels Granat and Mr. Arnold Granat
Hochberg Family Foundation
Ms. Catherine M. Hollander
Ms. Mary K. Howe
Mr. and Mrs. Dave Huber, Jr.
Mr. and Mrs. Philip Huber
Mr. and Mrs. Martin Hughes
Ms. Charlotte Jackson
Mr. and Mrs. Jerry Januszewski
Jocarno Fund
Ms. Alexandra Johnston
Ms. Dorothy A. Kapchinski
Dr. and Mrs. Douglas S. Kaplan
Mr. and Mrs. Robert N. Kaplan
Ms. Susie Kassof
Mr. and Mrs. Mark Kaufman
Mr. Tim D. Kenrick
Mr. Al Kola
Dr. Caryn and Mr. Lowell Kraff
Ms. Fran Kraus
Ms. Cynthia E. Krch

Mrs. Deborah Krolik
Mr. and Mrs. James Lasky
Mr. Henry L. Latkin
Mr. Steven Laughman
Mr. Steven H. Lavin
Mr. and Mrs. Mitchell Lichtenstein
Mr. Eric Linthicum
Mr. and Mrs. Thomas E. Livingston
Loeb Equipment
Mr. Lawrence E. Maloney
Mr. Peter Manis and Ms. Susan Richman
Mr. Richard P. Mann
Mattingly Low Vision, Inc.
McLean Foundation
Ms. Jeannette Mendez
Ms. Maggie Michelson
Midtown Athletic Club
MIS Computer
Mr. Michael Mondschean
Ms. Natalie Mosallam
Mr. and Mrs. Kurt A. Muller
Ms. Karin Norington-Reaves
Mr. and Mrs. William North
Northfield Township
nuHaus
Mr. and Mrs. Brian Oriente
Mr. Thomas Osborne
Palos Lions Club
Ms. Elisabetta Paparella
Mr. and Mrs. James N. Perry
Mr. Mark Peskor
Mrs. Sally Jo Pfaff
Mr. and Mrs. James Pillars
Mr. and Mrs. Tom Powers
Mr. and Mrs. Michael F. Realy
Mr. Todd Riggan
Roberts Family Foundation
Rocco Fiore & Sons Inc.
Mr. and Mrs. Steven B. Ross
Ms. Elisabeth Roth
Mr. Anthony Salcito
Mr. William J. Schlessler
Mr. and Mrs. Alan Schwartz
Ms. Kathy Share
The Sherwin-Williams Company
Mrs. Roni Siegel
Mr. Charlie Sprayregen
Mr. Irving Stenn, Jr.
Mr. and Mrs. Dick Stoken
Mrs. Alison Stolberg
Ms. Theresa Strnad
Mr. Peter Sutton
Taft Stettinius and Hollister LLP
Taxman, Pollock, Murray, & Beckerman, LLC
Mr. Don Toy
Philip R. Troyk, Ph.D.
Mr. Pete and Mrs. Pam Tully
Turano Baking Company
George P. White Foundation
Ms. Melissa Wittenberg
Young Horses

THE CHICAGO LIGHTHOUSE BOARD OF DIRECTORS

CHAIRMAN

Robert W. Clarke
Principal
The RJ Clarke Group LLC

VICE CHAIRMAN

Edward C. Jepson Jr
Attorney, Employment
Law
Vedder Price (Retired)

PRESIDENT

Janet P. Szlyk, Ph.D.
President and CEO
The Chicago Lighthouse

TREASURER

John Raske
Managing Director,
Diversified Industries
Commercial Mid-Market,
BMO Harris Bank

ASSISTANT TREASURER

Bruce Hague
President, Commercial
Banking
CIBC Bank USA

SECRETARY

Jaclyn McNally
Partner
Perkins Coie LLP

IMMEDIATE PAST CHAIR

Gary Rich (Retired)

EXECUTIVE COMMITTEE MEMBERS-AT-LARGE

Caroline Grossinger
Managing Partner
Grossprops Associates

Richard H. Schnadig
Attorney, Employment
Law
Vedder Price (Retired)

Julie A. Stark
Owner / Managing
Director
The Stark Solution

LIGHTHOUSE INDUSTRIES REPRESENTATIVE

Michael F. Meehan
Sales, Marketing and
Cost Containment
Consultant

DIRECTORS

Richard R. Boykin
Attorney at Law
Bridge Builders
Consulting & Legal
Services

Joel Bruckman
Attorney
Freeborn & Peters LLP

Anida Johnson "Cookie"
Cohen

Thomas A. Deutsch, MD
Senior Advisor to the
CEO
Rush University System
for Health

Sandra C. Forsythe

Megan Goldish

David J. Huber, CFP
Financial Advisor/
Managing Director
Savant Wealth
Management

Beena Joseph

James M. Kesteloot, CRC
President Emeritus
The Chicago Lighthouse

Manus C. Kraff, M.D.
Founder and President
Kraff Eye Institute

Marvin Lader (Retired)
Datavantage Corporation

Thomas Livingston
Head of State
Government Relations &
Community Affairs
CSX

Ellen Martin

Judy McCaskey
Educator and
Civic Volunteer

Karin Norington-Reaves
CEO
Chicago Cook Workforce
Partnership

Paul W. Rink (Retired)
Attorney

Sheree Schimmer

AUXILLARY BOARDS

ASSOCIATE BOARD

President
Sally Schwartz

Executive Committee

Haley Baer
Gail Boorstein
Allie Davidson
Lindsey Dexl
Jo Ann Galston
Terri Gordon
Gayle Harris
Amy Hausman
Jaclyn Joseph
Julie Kraff
Cheryl Kraff-Cooper, M.D.

Debi Learner
Pamela Leslie
Carly Linton
Nina Mann
Penny Meyers
Sheila Moss
Joani Oslan
Fran Pine
Ilene Shaw
Julie Smith
Alison Stolberg
Kim Strauss
Dana Weiss

JUNIOR BOARD

Joel Bruckman, *Co-Chair*
Megan Goldish, *Co-Chair*

LIONS STRICKFADEN ADVISORY COMMITTEE

Chairman
Past District Governor
Lion John Coleman

Members

Past Int'l Director Lion &
PDG Lion Dan O'Reilly
PDG Lion Steve Anton
PDG Lion Austin D'Souza
PDG Lion Howard Swacker

Governor

Lion Gail Anton

CHICAGO LIGHTHOUSE INDUSTRIES BOARD OF DIRECTORS

CHAIRMAN

Thomas Powers
Medline Industries, Inc.
(Retired)

VICE CHAIRMAN

Don Belgrad
Schnadig Corporation
(Retired)

PRESIDENT

Janet P. Szlyk, Ph.D.
President and CEO
The Chicago Lighthouse

SECRETARY/TREASURER

Michael F. Meehan
Sales, Marketing and Cost
Containment Consultant

DIRECTORS

Robert W. Clarke
Principal
The RJ Clarke Group LLC

Ted Mazola
New West Realty Group

Peter Miller
Founder and President
Security Systems, Inc.

Gary Rich (Retired)

Ted Wecker
President
CEO Skyline Furniture

BOARD OF DIRECTORS MEMBERS EMERITI

Richard R. Fabbrini
Carl Konrath
James McVane, Jr. Esq.

EMERITI IN MEMORIAM

In memoriam, we want to recognize past members emeriti, for without them, The Lighthouse would not be the organization it is today.

Norman F. Clarke
Philip L. Cochran
Mrs. Thomas A. Conners
Mrs. Darius C. Franche III
Mrs. Paul M. Godehn
Mrs. Louis B. Kuppenheimer
Mrs. Curry J. Martin
Mrs. Ralph Mills
Donald H. Palmer

James L. Palmer
Mrs. James L. Palmer
Mrs. William A. Patterson
Mrs. Edwin S. Rosenbaum
Ross D. Siragusa
Raymond C. Wieboldt Jr.
Mrs. Robert H. Wilson
Mrs. P. Mark Wyman
Theodore N. Zekman, M.D.

"The Lighthouse Industries Board is an opportunity to use my business talents to serve our mission. Employing people who are blind helps improve their lives and our community overall."

—TED WECKER | Chicago Lighthouse Industries



Sally is pictured with her sister, Betsy (L) and her nephew, Alan (C) who participated in our Birth-to-Three Program.

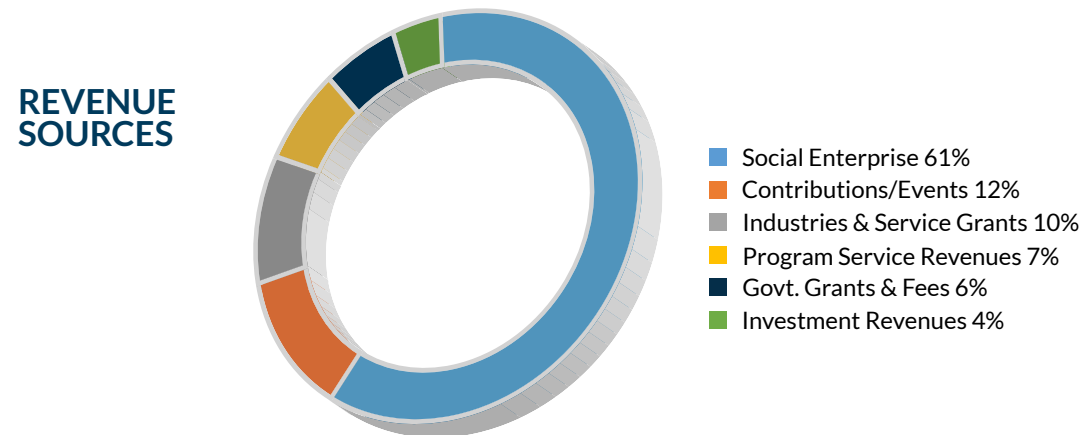
"Joining the Associate Board began as something utterly personal. I'm overwhelmed by the commitment of my fellow members, who give their time and their resources out of a dedication to helping people live more independently."

—SALLY SCHWARTZ
Chicago Lighthouse Associate Board

2020 - 2021 Consolidated Financial Summary and Comparison
STATEMENTS OF FINANCIAL POSITION
as of June 30

ASSETS		
	2020	2021
Cash	\$ 1,518,436	\$ 6,274,970
Receivables, Net	3,827,188	7,070,009
Inventories	1,195,950	610,565
Investments	11,660,162	14,578,750
Beneficial Interest in Perpetual Trusts	567,200	708,293
Prepaid Expenses	323,019	369,258
Land, Building and Equipment, Net	9,994,259	9,644,798
Total Assets	\$ 29,086,214	\$ 39,256,643

LIABILITIES AND NET ASSETS		
Liabilities	\$ 8,321,563	\$ 12,332,072
Net Assets		
Unrestricted	7,149,224	8,916,220
Unrestricted, Board Designated	8,241,055	12,510,922
Temporarily Restricted	3,400,449	3,382,410
Permanently Restricted	1,973,923	2,115,018
Subtotal Net Assets	\$ 20,764,651	\$ 26,924,571
Total Liabilities and Net Assets	\$ 29,086,214	\$ 39,256,643



STATEMENTS OF ACTIVITIES
Period ended June 30

REVENUES		
	2020	2021
Contributions & Bequests	\$ 3,157,143	\$ 5,777,340
Lighthouse Industries Sales	3,551,569	3,802,526
Call Centers/Service Contracts	28,667,195	31,264,860
Program Revenues	6,105,492	6,204,301
Investment Income	326,025	280,868
Miscellaneous	117,803	—
Change in Value of Split-Interest Agreements	(12,481)	132,256
Net Realized Gain/(Loss) on Investments	183,225	367,022
Net Change in Unrealized Appreciation of Long Term Investments	(370,491)	1,272,552

Total Revenues \$ 41,725,480 \$ 49,101,725

EXPENSES		
Program Services	\$ 38,252,992	\$ 35,173,943
Management & General	5,470,782	6,176,690
Fundraising	1,028,739	1,290,835
Public Relations	336,254	300,337

Total Expenses \$ 45,088,767 \$ 42,941,805

CHANGE IN NET ASSETS		
	\$ (3,363,287)	\$ 6,159,920
Net Assets at Beginning of Year	\$ 24,127,939	\$ 20,764,652
Net Assets at End of Year	\$ 20,764,652	\$ 26,924,572

THE CHICAGO SOCIALIGHT

See and be seen at one of The Chicago Lighthouse's unique and engaging events. Whether it's a poker and casino night, a fashion show, or an evening of decadent desserts, there's always something happening in support of our mission.

Be part of the fun! See our UPCOMING EVENTS at chicagolighthouse.org/events



1. Our **Scholarship Awards Ceremony** celebrated the accomplishments of 25 students who are blind, visually impaired or disabled. Through The Lighthouse's support, their dream schools and careers are within reach.
2. We celebrated the return to in-person events hosting this year's **Seeing What's Possible Annual Gala, "Be the Light,"** at the Millennium Park Rooftop Terrace Tent. Starting off the evening was a gospel choir singing, "Coming Out of the Dark."

3. Virtual Poker: Celebrity Poker Player, Chris Moneymaker, helps Raise the Stakes for Vision while playing in our **Virtual Texas Hold 'Em Tournament** with other players from around the country.
4. This year, we were back on the runway and honored Chicago Philanthropist and Lighthouse friend, Susan Griffiths Gohl, accompanied by Jonathan Grabill, at **FLAIR**.

5. Our Associate Board's 35th Annual **House & Garden Walk** goes virtual for the second year, featuring homes from around the country.
6. The Junior Board combined their two signature events this year hosting a virtual **Sips & Sweets for Sight**. All guests received a tote overflowing with branded sweets and wine from Clifton-Brewer Vineyards.
7. Our **2021 Gala Honorees**, Board Member David Huber and his wife, Nancy, smile alongside Chicago

- Lighthouse Board Member Caroline Grossinger.
8. Lighthouse employee, Kalari Girtley-Jackson, escorted by Scott Bobek, shines bright on the **FLAIR** runway as she models a ballgown from Mira Couture.
9. Guests enjoyed playing Canasta via Zoom during our Associate Board's virtual **Games Galore** event.
10. Guests toast after making a generous group donation. Our 2021 **FLAIR** event was the most successful to date!

Unprecedented challenges—and new opportunities—emerge every day.
A gift to The Lighthouse's Endowment Campaign is an investment in our continued legacy. With your support, we can keep opening doors that help people live more independent, fulfilling lives—long into the future.



A campaign to **ensure** that The Chicago Lighthouse will continue to provide essential **services** to people who are blind, visually impaired, disabled and Veterans **for years to come.**

**For more information or to donate, please contact:
Janet P. Szlyk, Ph.D., President/CEO (312) 997-3644.**



The Chicago
Lighthouse

1850 West Roosevelt Road, Chicago, IL 60608 | Tel (312) 666-1331
222 Waukegan Road, Glenview, IL 60025 | Tel (847) 510-6200

www.chicagolighthouse.org