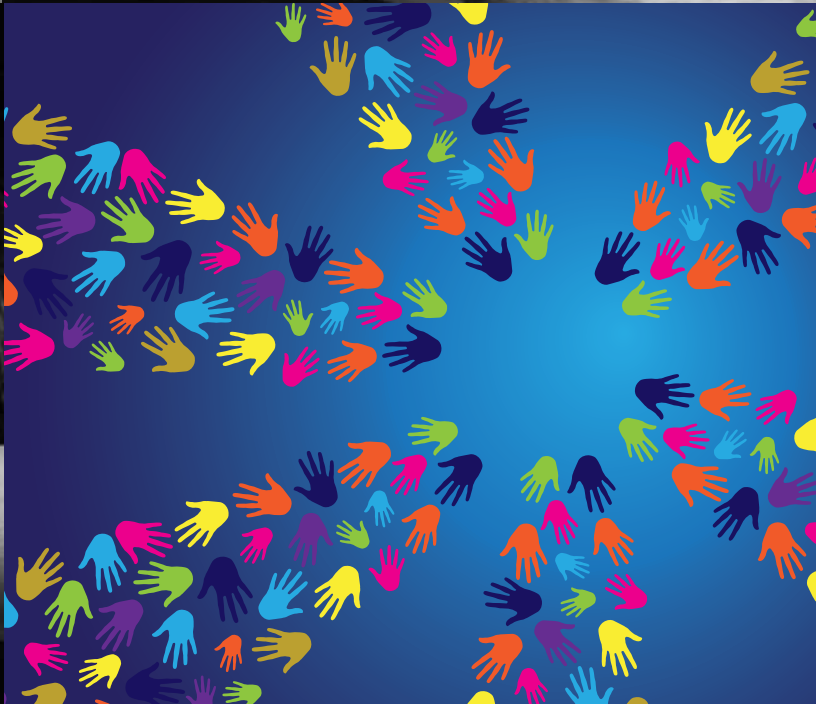


# MANY HANDS LIGHT THE WAY



**The Chicago Lighthouse**

2014 Annual Report





# MANY HANDS LIGHT THE WAY

has been a recurring theme at The Chicago Lighthouse in 2014.

It not only reflects the superior care that our dedicated staff offers in the form of education, customer service, job training and many other areas.

It is also found in the generosity of our donors, both individual and corporate, as well as our legion of enthusiastic volunteers.

In addition, it is illustrated through creative partnerships that we've forged with both the public and private sectors. These partnerships with organizations like the Illinois Tollway, UI Health, Chicago Public Schools, Advocate Health Care and many others have led to the creation of hundreds of jobs for talented individuals who are blind or visually impaired. It also makes possible the establishment of new programs like our Preschool for All.

The Chicago Lighthouse's sterling reputation for the past 109 years and our ongoing commitment to excellence we believe makes us a most desirable partner.

We look forward to building on that foundation in the years ahead and to continue developing new alliances to better serve the blind and visually impaired community.





“These innovative call centers represent social enterprises by being successful businesses that feed a charitable mission. It is a modern day equivalent to... ‘give a man a fish and he’ll eat for a day, teach a man to fish and he’ll eat for a lifetime.’”

A handwritten signature in black ink, reading "Richard H. Schnadig".

Richard H. Schnadig  
Chair, Board of Directors

A handwritten signature in black ink, reading "Janet P. Szlyk".

Janet P. Szlyk, Ph.D.  
President and Chief Executive Officer



# DEAR FRIENDS,

It takes many hands for The Lighthouse to provide the level of exemplary services it offers. It takes the hands of volunteers to help build a new playground. It takes the hands of call center agents to assist motorists with questions about their Illinois Tollway I-Pass accounts. And, it takes the hands of a team of assistive technology specialists to show seniors the latest devices to help them cope with vision loss.

They all help illustrate The Lighthouse's major accomplishments in 2014 and embody the theme of this year's annual report: "Many Hands Light the Way."

It is through their tireless efforts and those of many others that allows The Lighthouse to continue to fulfill its critical mission of providing the highest quality services for people who are blind, visually impaired, multi-disabled and Veterans.

A key component of our mission is to open doors to job opportunities for these individuals. Generating most of those jobs in the past year were The Lighthouse's call centers.

For example, the Customer Service Call Center, which we manage for the Illinois Tollway, now employs over 300 people, more than half of whom are blind, visually impaired, otherwise disabled or Veterans. When the center opened in November, 2013, fewer than 5 percent of these employees were disabled or were Veterans. This is a singular accomplishment for an organization dedicated, in part, to finding employment opportunities for these individuals.

Word about our success led to the establishment of another major job-creating operation, the UI Health Customer CARE Center. Begun at The Lighthouse this past fall, the facility to date employs nearly 60 staff members who answer calls to UI Health's main customer service number. This is another example where "Many Hands Light the Way!"

These innovative call centers represent a social enterprise by being a successful business that incorporates a charitable mission. The centers not only provide life fulfilling work for individuals who are blind or visually impaired. They also bring in additional revenue to support The Lighthouse.

The value of these synergistic relationships was also showcased in the creation of our new playground. This exciting venture came about through partnerships with Blue Cross and Blue Shield of Illinois and KaBOOM!, a national non-profit. On a warm summer day, many hands came together from the Lions Clubs and other groups who volunteered to build the playground and make it a reality for hundreds of children.

These are just some of the major developments that occurred at The Lighthouse in 2014. You can read more about our efforts and the generous people that made them happen in this report.

We thank you for lending a hand to make these accomplishments possible.





“Thanks to The Lighthouse, I can receive the training I need, while my daughter attends school, all in the same building!”





## LIGHTHOUSE IS A REAL FAMILY AFFAIR FOR MOM AND DAUGHTER

One family member is learning to master the latest in assistive technology in The Lighthouse's Office Skills program.

The other is learning the alphabet, singing songs and drawing as a student in the agency's Preschool program.

Meet Elizabeth and Karen Hernandez, a mom and daughter who call The Chicago Lighthouse a second home. For them, it is a true family affair!

Elizabeth, a native of Mexico who is legally blind, enrolled in the Office Skills program this past September. She hopes to hone her computer skills and eventually secure a position with the U.S. Embassy.

She credits The Lighthouse for being a miracle in providing Preschool opportunities for her three-year-old daughter, Karen, who is also visually impaired, while she gains additional training through the Office Skills program.


"This is great and I absolutely love it," Elizabeth smiles. "Thanks to The Lighthouse, I can receive the training I need, while my daughter attends school, all in the same building!"

Elizabeth mentioned that she starts her program around 9 am each day and concludes it by 3 pm. Those times roughly parallel Karen's school day. "Then we pack it up and head home via Paratransit," she says.

Asked how she likes to unwind from her work and parental duties, she laughs that being a mom is "a full-time job, but a labor of love!"

She stated that the arts are important to her and her husband, Juan, a guitarist who is also visually impaired.

"We are delighted to have both Elizabeth and Karen with us," said Dr. Szlyk. "They very nicely illustrate the comprehensive nature of and synergy amongst our programs," noting that under one roof, a parent can gain critical job skills while her child is learning in the Preschool. "Every parent knows that it is much easier to focus on your own goals when your child is safe and happy."







The low-vision research team—  
L to R: Dr. William Seiple, Patricia Grant,  
Dr. Paul Kilbride, Melissa Bangle,  
Dr. Janet Szlyk and Meesa Maeng



**MANY** HANDS light the way





## SPOTLIGHT ON THE LIGHTHOUSE'S LOW VISION RESEARCH LABORATORY

It is well-known that The Lighthouse is a haven of critical programs for people with visual impairments. However, what most people do not know is that it is also an innovative research facility.

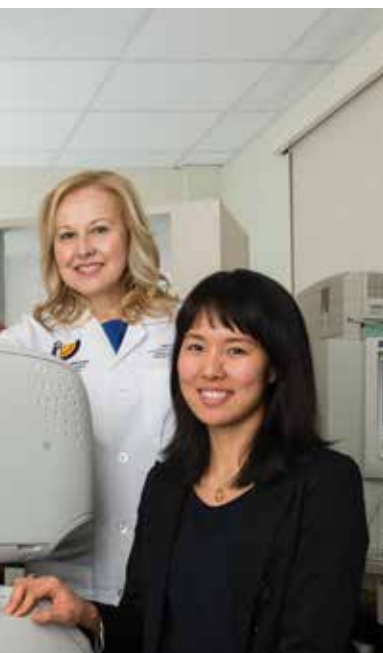
The Low Vision Laboratory is home to leading-edge low vision rehabilitation research. Dr. Szlyk, a well-known vision rehabilitation scientist, brought her lab to The Lighthouse, when she joined the agency in 2008.

Meesa Maeng, program director, summarizes the current research: "We developed a therapeutic training program for vision rehabilitation, especially for people with macular disease, like macular degeneration. When people come here, they are concerned about not reading like they once could. Often, they lose their independence. Dr. Szlyk had these concerns in mind when designing it. This program and research is being done in collaboration with Dr. William Seiple, director of the Arlene R. Gordon Research Institute at the Lighthouse Guild (NY), and Dr. Paul Kilbride, a computer programming expert."

"We built and created a program that contains physical eye exercises to increase reading speeds. Half of the patients will be seen in the lab, while the other half will use it at home. By the end of the eight week period, the patients should have learned how to read effectively by using their remaining vision."

Dr. Szlyk adds, "Thanks to The Cless Family Foundation, we were able to buy a microperimeter (MAIA). The MAIA measures, with great accuracy, the sensitivity of localized areas of the retina. Simple to use, the patients are evaluated in under three minutes. Vision rehabilitation is then targeted in those areas of remaining vision. The MAIA has a biofeedback component that will allow us to train patients to strategically use those islands of vision to see and read, which reinforces the techniques learned in the behavioral training program."

Dr. Szlyk summarizes, "We are grateful to our patients participating in the research, with the goal that we are enabling more people to become independent in the future."



# NEW UI HEALTH CUSTOMER CARE CENTER DEDICATED AT THE LIGHTHOUSE

The Chicago Lighthouse marked a new milestone in making jobs available to people who are blind, visually impaired or multi-disabled by formally dedicating the new UI Health Customer CARE Center in a ceremony on November 19th, 2014.

Housed at the 109-year-old agency, the new facility embodies the philosophy, "Many Hands Light the Way," as it employs to date nearly 60 Lighthouse staff members who answer calls to UI Health's main customer service number. They help patients register, schedule appointments, coordinate referrals and perform other tasks.

Dr. Szlyk saluted Dr. Airica Steed, Enterprise Chief Experience Officer at the University of Illinois Hospital and Health Sciences System, and her team, for their vote of confidence in extending these critical employment opportunities to so many talented individuals with disabilities. In addition, Dr. Szlyk thanked Kathy Stoeberl, director of call center operations at the agency, for her tireless work on behalf of the facility as well as The Lighthouse Board for their support of the initiative, without which, she said, it would not have taken off.

Both Dr. Szlyk and Dr. Steed singled out for praise Sharla Roberts, director of procurement diversity, University of Illinois Administration, for her unflinching commitment to helping people with disabilities find jobs and for bringing the two organizations together.

Also recognized by Dr. Szlyk was Daniela Estrada, a Customer CARE Center agent who is totally blind. She graduated in 2013 from the University of Chicago and is working at the call center to save money for law school.

Lighthouse Board Chair Richard Schnadig, who attended the ceremony, noted that the new call center operation was a "win-win" for all sides. "This facility not only provides meaningful employment for individuals who are blind or visually impaired, but it also brings in additional revenue to help The Lighthouse carry out its critical programs."







Daniela Estrada (left) and Adnana Saric (right,) along with their guide dogs, Beatrice and Yani, working in the UI Health Customer CARE Center.

“This job means so much to me and I look forward to coming in every day,” says Adnana Saric, a refugee from war-torn Bosnia who lost her sight at the age of four.

# KANE LEGAL CLINIC'S ATTORNEY CAROL ANDERSON HELPS LIGHT THE WAY

Through her intellect, compassion and love for helping others, she is an ideal goodwill ambassador for The Lighthouse's Kane Legal Clinic. The clinic is the only program in the nation providing legal services exclusively to people who are blind or visually impaired at no charge.

After all, she studied French and earned her bachelor's degree from the prestigious Wellesley College in Massachusetts.

She then went on to receive advanced degrees from two other famed top-tier schools; a master's in French from Stanford University and an MBA from the University of Chicago, respectively.

Further earning a law degree from the U of C, her goal was to pursue a career as an international banker.

However, her life took many twists and turns. Today, Carol Anderson is a mainstay in the Kane Clinic, where she serves as the first point of contact for countless individuals from across the state who are seeking to address a wide range of legal problems.

"This is a special place to work because we provide a service that most people who

are blind or visually impaired can't find anywhere else," she says while flashing her trademark smile.

Anderson adds the fact that she and the clinic's director, Paul Rink, are totally blind enables them to bond more closely with their clients.

"Many of the people we serve are in need of lots of help," she observes. "So

Paul and I, along with our colleague Cacia Sit, who serves as an administrative assistant, promote an environment that is warm and friendly yet professional."

In her role, Anderson screens every call, listens to the legal problems, provides

preliminary advice and prepares case summaries for Rink. In addition, she assists with the preparation of legal documents.

When asked what issues tend to be most pressing among the clients, she responds, "social security disability, personal injury, employment and housing."

"I also answer basic questions such as how a blind person can arrange their paratransit or sign up for programs from the Illinois Department of Human

**"...the fact that she and the clinic's director, Paul Rink, are totally blind enables them to bond more closely with their clients."**







Carol Anderson and Paul Rink of the Kane Legal Clinic provide free legal counsel to people who are blind or visually impaired.

Services,” she notes. “Another thing we do is provide referrals to law firms and other legal clinics.”

“Carol does an amazing job for us,” Rink says. “She has great people skills, has a sound understanding of the law, is extremely conscientious and is a most pleasant person to be with!”

Anderson maintains that organizations like The Lighthouse are a critical resource for the blind community and a major reason why people who are visually impaired should never give up.

“I am grateful that it is there as a literal beacon of hope!”

# HIGHLIGHTS

## Diverse Workforce at Illinois Tollway Call Center Celebrated



The Chicago Lighthouse joined the Illinois Tollway and The University of Illinois at Chicago (UIC) for a special celebration on October 30th in marking the first anniversary of the opening of the Tollway's Customer Service Call Center with the announcement that more than half of the facility's workforce are now disabled or Veterans.

Both the Tollway and The Lighthouse committed to reaching that 50 percent staffing level within a year of opening the nearly 22,000-square-foot center, which began operating in 2013 at 750 S. Halsted on the campus of the University of Illinois at Chicago (UIC). The Lighthouse manages call center operations under a five-year, multi-million dollar contract with the Tollway.

One hundred and fifty-six employees, or 52 percent of all customer service representatives, are qualified as disabled persons or as Veterans. When the center

opened, fewer than five percent of these employees were disabled or were Veterans.

In her remarks, Dr. Szlyk thanked Illinois Governor Pat Quinn, Tollway Board Chair Paula Wolfe and Tollway Executive Director Kristi Lafleur for their strong vote of confidence in The Lighthouse and for opening doors to new opportunities for people who are blind, visually impaired, multi-disabled and Veterans. She also thanked The Lighthouse Board for its critical support as well as the agency's HR, Employment Services and IT departments in assuring that the operation runs smoothly and efficiently.

"Of course, this wouldn't be possible without the amazing men and women who staff the facility every day and provide the very best in customer service to Tollway users," Dr. Szlyk noted.

Four of the agents, Kimberly Duhart, Kenneth Calbert, William Bryant and Alex Westphal, were acknowledged with a round of applause.

## Assistive Technology Center Expands Services

In all, 2014 was a busy year for The Lighthouse's Assistive Technology Center (ATC).

The popular Low Vision Product Road Shows, conducted by Tom Perski, senior vice president of rehabilitation services, and his team added several new markets.



Among them were Kankakee, Deerfield, Worth, Hoffman Estates, Wilmette, Barrington and Frankfort. The Lighthouse extends its deepest appreciation to the Lions of Illinois for their support.

To better assist individuals needing technical support in the suburbs, Chicago Lighthouse North staff member Matt Gear's status was changed to full-time. Gear works with clients from our Glenview location.

In addition, a new coordinator, Peter Tucic, was named to staff the Assistive Technology Help Desk, which has helped hundreds of callers, who are blind, with their computer problems. In the past year, Tucic has assisted callers from across the U.S. as well as Europe and Canada.

A new breakthrough technology, the Prodigy, was launched by HumanWare Corporation in 2014. In recognition of its commitment to excellence, The Lighthouse's ATC was named the first "Prodigi Channel Partner of the Year."



## **Lighthouse Raises Nearly \$300K at 2014 "Seeing What's Possible" Annual Dinner**



At one of its most acclaimed events in recent years, The Chicago Lighthouse's Annual "Seeing What's Possible" Dinner held on May 22nd, raised nearly \$300,000 to benefit agency programs.

Held at the elegant Four Seasons Hotel, the dinner attracted a crowd of more than 300 friends and supporters.

Highlights included a compelling keynote address from noted Chicago writer and poet Rachel DeWoskin, whose latest novel "Blind," talks about the challenges faced by a teenager who suddenly loses her vision. Ms. DeWoskin credited The Lighthouse for giving her important new insight into blindness, which greatly assisted her in writing the book. She said that the experience has made her a big fan and advocate for the agency.

Distinguished attorney Frank Chanen, a longtime Lighthouse Board member and former chair, received The Lighthouse's

prestigious “Beacon of Light” Award for his extraordinary contributions on behalf of the blind and visually impaired community. Introducing Mr. Chanen in a special video presentation was Chicago broadcast icon Bill Kurtis.

In her remarks, Dr. Szlyk thanked everyone for their generous support, singling out for special praise, Dinner Chair Anida Johnson “Cookie” Cohen, for her “tireless efforts to make the event a huge success.”

She also saluted retiring Lighthouse Board Chair Bruce Hague and Chief Operating Officer Terry Longo for their service.

Making a return appearance was gifted artist Jeff Hanson, whose paintings have been purchased by such celebrities as Elton John. Jeff, who is visually impaired, donated some of his artwork at the Dinner’s Live Auction, with proceeds benefitting Lighthouse programs.

Guests were also feted to the magical sounds of Lighthouse Board member Paul Rink, who played the piano during the reception; the agency’s very own popular group, Vision Quest, who performed via videotape; and the Stanley Paul Quartet, who played a number of dance tunes following the dinner.

### **Annual FLAIR Event Features Tribute to Vonita Reescer**

The Chicago Lighthouse honored local philanthropist and new Board member Vonita Reescer for her outstanding community service during the agency’s annual FLAIR: Fun Fashion Philanthropy event on Tuesday, September 9th.

Hosted by Sun-Times columnist Bill Zwecker, the luncheon took place at the Fairmont Hotel and attracted nearly 200 guests, including Commissioner Karen Tamley of the Mayor’s Office for People with Disabilities.

In addition to presenting Ms. Reescer with its first annual FLAIR Award, the program featured a fashion show with models showcasing looks from the popular Frances Heffernan Boutique in Winnetka. Models in the event included Former Vice-Chair of the Board Sandy Forsythe; Board Member Kati Hochstadt; Jamie Hague, the wife of Immediate Past Chair, Bruce Hague, V.P. of Financial Development Jennifer Miller, and staff member Sammi Grant. All proceeds benefited Chicago Lighthouse programs assisting children with vision loss and other special needs.



Another major highlight was a \$25,000 donation from Rochelle Trotter, widow of the famed chef, the late Charlie Trotter. A strong advocate for the agency, Mr. Trotter had previously hired a blind program participant, Laura Martinez, who he met at The Lighthouse, as a chef in his popular restaurant.

## Second Annual Lighthouse/Mike Ditka Golf Outing Scores a Hole in One!



More than 65 golfers came out to support Chicago Lighthouse North at the agency's Second Annual Mike Ditka Charity Golf Tournament.

The event took place July 14th at the North Shore Country Club in Glenview.

Immediately following play were a reception, silent auction and awards ceremony in which Dr. Szlyk extended her appreciation to all of the golfers; tournament namesake Mike Ditka, also a Board member; host North Shore Country Club and Lighthouse Board member Sandy Forsythe, who helped arrange for the club to host the golf outing and served as chair of the event.

Other event highlights included the participation of celebrity golfers and NHL legends Stan Mikita, Reggie Kerr, Cliff Koroll and "Miracle on Ice's" Jack O'Callahan. The event received coverage from WGN, FOX News, The Glenview Lantern and The Glenview Journal & Topics newspapers.

All proceeds from the golf outing benefitted programs and services for

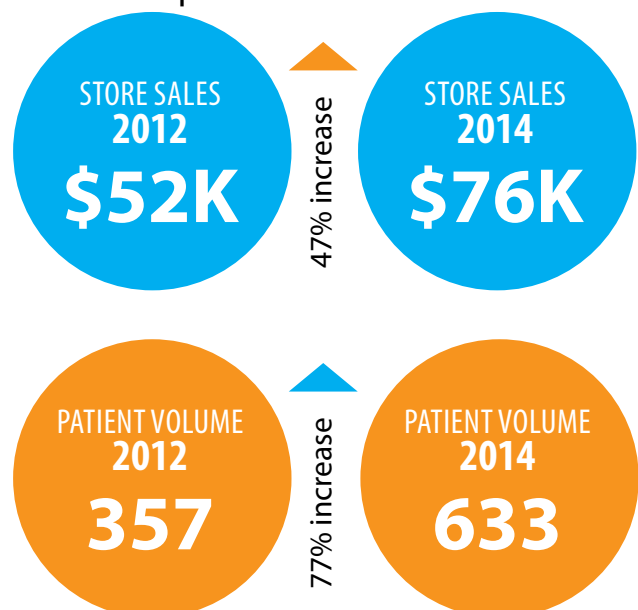
people who are blind or visually impaired at The Chicago Lighthouse North in Glenview.

## Lighthouse North in Glenview Experiences Steady Growth

The Chicago Lighthouse North in Glenview continues to grow which can be seen in increased sales in its Tools for Living™ retail store and an abundance of new patients referred to its Low Vision Clinic.

Since opening its doors in January 2012, when looking at calendar year comparisons, both store sales and overall patient volume increased dramatically. See chart below for more details.

Melissa Wittenberg, Lighthouse North director, attributed the growth to a number of factors, including increased outreach to existing and new referring doctors, increased number of doctor days, and an increased outreach into the community to build awareness and relationships.





# LIGHTHOUSE BUILDS AND DEDICATES NEW PLAYGROUND

Many hands were clearly on display last summer when more than 200 volunteers came together on Saturday, July 26th, to build and dedicate, all on the same day, a new playground at The Lighthouse.

The facility, which formally opened after Labor Day, was especially designed for children with disabilities.

It was generously funded primarily by Blue Cross and Blue Shield of Illinois in partnership with KaBOOM!, a national non-profit dedicated to bringing balanced and active play into the lives of all children.

Helping to make this exciting venture possible were volunteers from Blue Cross and Blue Shield of Illinois, KaBOOM!, The Lighthouse, local Lions Clubs and many others.

Assisting in the ribbon cutting was Chicago Alderman Robert Fioretti, who represents the district The Lighthouse is within in the City Council. Among media covering the event was CBS 2 Chicago, which featured a segment on its 5pm news.

To get their input, children enrolled in The Lighthouse's educational programs were asked to offer suggestions on the shape and design of swings, slides and other features. Parents were also involved in the design of the playground.

The agency staged a "Design Day" last June 9th during which the youngsters drew items they wanted to include in their "dream playground."

"It is important for us to get direct feedback from the 'playground experts,' the kids of course, and to ensure the new space reflects their big ideas!" said Melissa Drouganis, KaBOOM! project manager. She added that youth involvement and participation are important parts of the KaBOOM! community-build model.



Dr. Szlyk thanked Blue Cross and Blue Shield of Illinois, KaBOOM!, the Lions and all the volunteers for their efforts in making the new facility a reality.

"With your help, we have added an amazing play area to The Lighthouse that will be enjoyed by our children and members of the community for years to come!"







Board Member Paul Scher (left) lends a hand during build day for the playground.





## THE LIGHTHOUSE LOSES A DEAR FRIEND LINDY BERGMAN

Philanthropist. Art Collector. Author. All of these words and more describe Lindy Bergman, who died at 96 in 2014.

Born Betty Jane Lindenberger, she and her husband helped found the Museum of Contemporary Art. They were lifelong art collectors, with a love for Joseph Cornell boxes and Surrealistic art.

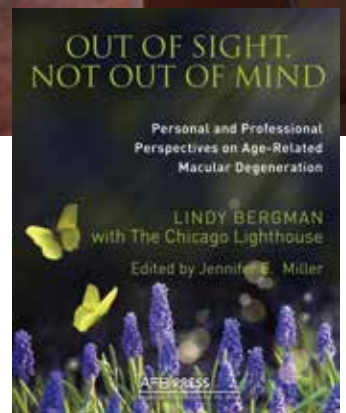
Lindy had macular degeneration in her last two decades. She turned to The Lighthouse, which commenced the beginning of our partnership. We worked with Lindy on updating her book on living with macular degeneration, and *Out of Sight, Not Out of Mind: Personal and Professional Perspectives on Age-Related Macular Degeneration* was born.

Lindy also understood the need for counseling as a part of comprehensive low vision care. She helped establish The Bergman Institute for Psychological Support at The Lighthouse.

In addition, Lindy helped the agency meet the Kresge Challenge, providing the final gift which enabled us to receive \$500,000. The monies helped us build our 12,000 square foot addition, where the Bergman Institute is now housed.

In 2011, we honored Lindy for all of her contributions. Lindy gave a passionate speech about what The Lighthouse meant to her and received a standing ovation. This was her last public speech.

"Lindy, we miss you," said Dr. Szlyk, "But, your spirit and the amazing things you accomplished will always live on here."





# LIFETIME DONORS

## **\$1,000,000+**

Anonymous  
Mr. and Mrs. Charles L. Barancik  
The Chicago Community Trust  
Chicago Lighthouse Associate Board  
Frank J. Fitzgerald Trust  
Mr. Corwith Hamill\*  
Mazza Foundation  
North Suburban Healthcare  
Foundation  
United Way of Metropolitan Chicago

## **\$500,000-\$999,999**

Anonymous  
Mrs. Lindy Bergman\*  
Lena G. Brede Trust  
Eleanor W. Browning Trust  
Elizabeth Z. Drew Trust  
Mr. and Mrs. Richard A. Forsythe  
Julius N. Frankel Foundation  
Mr. and Mrs. Arthur Kane  
Kresge Foundation  
Mrs. Tina Lavezzorio\*  
Mr. and Mrs. Raymond McCaskey  
Mr. Fred Mickina Estate  
Microsoft Corporation  
Irvin Newgren Trust  
Polk Bros. Foundation  
Robert R. McCormick Foundation  
Dr. Scholl Foundation  
The Searle Funds at The Chicago  
Community Trust

## **\$250,000-\$499,999**

Anonymous  
The Barker Welfare Foundation  
Elizabeth Bartels Trust  
The Berner Charitable and  
Scholarship Foundation

Blue Cross and Blue Shield  
of Illinois  
Kate Charshan Trust  
JPMorgan Chase Foundation  
Conrad N. Hilton Foundation  
Crown Family Philanthropies  
The Foundation Fighting Blindness  
Benjamin Benedict Green-Field  
Foundation  
The Harris Family Foundation  
Carrye & Abraham S. Hart Fund  
The Healthcare Foundation  
of Highland Park  
Ralph Juchcinski Trust  
Dr. and Mrs. Joel A. Kaplan  
Lions Clubs International Foundation  
Mrs. Beatrice C. Mayer  
Edmond and Alice Opler Foundation  
The Retirement Research Foundation  
Anita Swanstrom Trust  
Dollie Swarts Memorial Trust  
Elvira Teel Trust  
Wohlers Family Foundation

## **\$100,000-\$249,999**

Anonymous (5)  
The L & R Anixter Foundation  
Mr. Bernard J. Beazley\*  
The Blowitz-Ridgeway Foundation  
The Boeing Company  
William\* and Rita Bold  
BP Amoco, PLC  
Helen Brach Foundation  
Bridgeview Bank Group  
Fred J. Brunner Foundation  
Dr. Roy W. Carlson  
Mr. and Mrs. Franklin A. Chanen  
Cless Family Foundation  
CompTIA Educational Foundation  
Ernst & Young LLP

Henry Erskine, Jr. Marital and  
Family Trust  
Exelon Corporation  
The Field Foundation of Illinois  
Lloyd A. Fry Foundation  
Samuel & Etta Garras Trust  
H. Dennis Giertz  
Max Goldenberg Foundation  
The Irving Harris Foundation  
Bernard Jaffee Trust  
Marjorie Klecar Trust  
Mr. and Mrs. Carl Konrath  
Mrs. Mary E. Liebman\*  
Lions of Illinois Foundation  
Irma Lobe Trust  
Russell Marshall Trust  
McDonald's Corporation  
Arthur R. Metz Fund, Globe  
Foundation  
Michael Reese Health Trust  
Ronald McDonald House Charities  
Carl H. Sandin Trust  
Florence Schaffenegger Trust  
The Siragusa Foundation  
Lois Smith Estate  
SmithBarney Citigroup, Inc.  
Special Kids Foundation  
The Edward S. Sprague Foundation  
Mr. and Mrs. Roger Stone  
Topfer Family Foundation  
Fred R. Wesemann Trust  
Stanley Wielkiewicz Trust  
Wilczynski Trust  
Richard H.\* and Diane Wille\*  
William Blair & Company Foundation  
Ethel Wiseman Trust  
George H. Zendt Charitable Trust

*\*deceased*

# PLANNED GIVING

## PLANNED GIFTS RECEIVED JULY 2013-JUNE 2014

Millicent H. Cooper Trust  
Lillian Del Chicca Trust  
Alex Demond Trust  
Amelia Dregosh Trust  
Elizabeth Z. Drew Trust  
Harry H. Erskine Marital and  
Family Trust  
Carrye & Abraham S. Hart Fund  
Koch Charitable Remainder  
Annuity Trust  
Cora Davis Magie Fund  
Fred Mickina Estate  
Jean Owen Trust  
Anita Swanstrom Trust  
Dollie Swarts Memorial Fund  
Bertha Tomaska Trust  
Abbie E. Tyrell Fund  
Veronica Wilczynski Trust  
George H. Zendt Charitable Trust

## MILTON J. SAMUELSON SOCIETY MEMBERS

*Friends who have remembered The Chicago Lighthouse in their will, estate plan, or who have made another type of planned gift, such as a charitable gift annuity.*

Anonymous (44)  
Steven and Pamela Adelman  
John Cardiello  
Franklin and Doralu Chanen  
Helen Collins  
Sandi Dorst  
Melvin B. Franklin  
Andrzej and Marian Gerlach  
Richard Greenberger  
Irene Gruthoff  
Dorothea Hely  
Lorraine Jacobsen  
Harry and Lillian Joerger  
Arthur and Esther Kane  
James and Barbara Kesteloot  
Lois Kline  
Carl and Margarete Konrath  
Donald Krumrey  
Davida Levy

Lee H. Martin  
Richard C. Maslo  
Jennifer and Steve Miller  
John and Winifred Morris  
Donald G. Morrow  
William Paullin  
Jeanette Peter  
Kathleen Peter  
Beverly V. Peters  
Paul W. Rink  
Dr. Alfred and Sarah Rosenbloom  
Leonard Rodriquez  
Ramona C. Samuelson  
Richard Schnadig  
Paul and Ann Scher  
Milan Sluka  
Drs. Janet P. Szlyk and Jeffrey Jackson  
Harry and Lila Tankus  
Theodore M. Utchen

*For information about making a Planned Gift to The Chicago Lighthouse, please contact Jen Miller, Vice President of Development for Individual and Planned Giving, at (312) 997-3643 or email [jennifer.miller@chicagolighthouse.org](mailto:jennifer.miller@chicagolighthouse.org). If you have remembered us in your will or estate plan, please let us know, so that we may properly honor you!*



# VOLUNTEERS

AmeriCorps Project More  
Iris Armstrong  
Theresa Benande  
BMO Harris Bank  
BMO Financial  
Blue Cross and Blue Shield of Illinois  
Samuel Brown  
Mike Callahan  
Carpenters Union  
Larniecia 'Nominee' Carranza  
Chicago Delta Gamma  
Alumnae Chapter

City Year Group (An  
AmeriCorps group)  
Come as You Are Church  
ComEd  
Columbia College Chicago  
Lynn M. Cooper  
De Paul Delta Gammas  
Eleodora Duarte  
Sara Foley  
Charles Fox  
Gap, Inc.  
Barbie Greiwe

Jeremy "Dax" McDonald  
The Nielsen Company  
Performics  
Rachel Shapiro  
Sidley Austin Law Firm  
Target  
Tower Group  
University of Michigan Club  
of Greater Chicago  
United Way  
Willows Streams Lions Club  
Lois Leeb-Wittenberg



**MANY** HANDS light the way

Michelle Ashton  
Helen Banta  
Sarah Bennett  
Ralph Block  
Kathleen Boland  
Kristin Borozny  
Birch Burghardt  
Robert Burton  
Cora Burton  
Paul Cary  
Charles Casey  
Mayuri Chandran  
Doug Cooper  
Wendy DeLeon  
Jimmy Dickman  
Girlee Douglas  
John Edstrom  
Jean Edwards  
Ramatu El-Mohammed  
Danielle Engwert  
Reven Fellars  
Bill Foy  
Ruth Frazier  
Betty Fromm  
Taryn Giddings  
Steve Goldberg  
Kevin Graczyk

Audrey Hauser  
Jacqueline Hudson  
Tony Kelly  
HoJung Kim  
Linda Kimbrough  
David Kneisel  
Harish Krishnan  
Rob Lamont  
Susan Lennark  
Scott Libman  
Roger May  
R Mira  
Ghizala Mohsin  
Gissel Mojica  
Zoe Naidoo  
Samiyah Nazeer  
Kate Naylor  
Ken Nelson  
Tom Nichols  
Nick Palermo  
Enid Rieser  
John Ryan  
Chuck Schroeder  
Anam Shaffie  
Shelly Sherman  
Zach Simms  
Charlie Silverstein

Stan Smith  
Leslie Stensland  
Sarah Stickler  
Kathy Tate-Bradish  
Michelle Tavaras  
Saunjae Taylor  
Brian Treglown  
Nichole Trumbill  
Hui-min Tsen  
Peter Tyor  
Kathryn Velez  
Rich Vignocchi  
Evelyn White  
Ken White  
Carolyn Wilbon  
Bobby Williams  
Margaret Winn  
BMO Capital Markets  
Rush Nurses  
Pre-school Parents  
Chicago University Delta Gammas  
Michael Kinn  
Lauren Gallagher  
Christian Pilhofer  
Kevin Meil  
Janice Sals



# IN-KIND KINDNESS

Lorraine Adney  
Linda Alexander  
John Antimuro  
Auditorium Theatre of  
Roosevelt University  
Avanti Skin Center  
Louise Bender  
Sue Berger  
Lindy L. Bergman  
Rhoda Bernstein  
Blake  
Lillian Blem  
John R. and Sherrill Bodine  
Florence Bolton  
Hanna Bratman  
Bettie P. Broderick  
Jennifer Bronski  
Buddy Guy's Legends  
Roxanne Calibraro  
Chicago a capella  
Chicago Architecture  
Foundation  
Chicago Bears  
Chicago Bulls  
Chicago History Museum  
Chicago Jazz Magazine  
Chicago Wolves  
Chipotle  
Ivy Coleman  
Denise Costello  
Robert Cowan  
Lynn M. Cooper  
Dana Hotel and Spa  
The Denim Lounge  
DownBeat Magazine  
Dunkin' Donut /  
Baskin-Robbins  
eDROP-OFF  
Edward Fox Photography  
Entertainment Cruises  
Angela Fett  
Robin Fintel  
Sandra C. Forsythe  
Frankie's on the Park  
Michael Fried  
James Gatz  
Gene Siskel Film Center  
Kim Gillum  
Howard Golden  
Linda A. Grear  
Anthony Green  
Jamie Hague  
Gabrielle Hanson  
James Harfield  
Hawkeye's Bar and Grill  
Chicago

Frances Heffernan  
Ruthjean Hennig  
Ms. Lois Herzeca  
Dr. and Mrs. Bruce  
Hochstadt  
Trisha Hockings  
Britt Hodqdon  
Hotel Burnham  
Kathleen Hotten  
Hub 51  
Mr. and Mrs. David Huber  
J. Gordon Designs  
Jazz Institute of Chicago  
Jazz Record Mart  
Jellyfish Restaurant  
Karyn's Fresh Corner and  
Inner Beauty Center  
Catherine Keebler  
Cindy Kessel  
Barbara Ketter  
Family Ketter  
Kincade's Bar & Grill  
Kingston Mines  
Matt Kosterman  
Photography  
Ms. Beverley J. Kroll  
Baiba Kuntz  
John F. Kwinn  
H2O+  
Marcy Larson  
Mary Lasky  
Ray Lekan  
Myla Lerner  
Diane Levine  
Helen Lewis  
Nancy Lewis  
Lissa  
Lucky Strike Chicago  
Lulu's on the Avenue Inc.  
Dee Lyne  
Lynfred Winery Wheeling  
Christine Lyon  
Lyric Opera of Chicago  
Marianne Strokirk Salons  
Mark Brown Photography  
Mary Mary Gifts  
Beatrice C. Mayer  
Kathryn McGirr  
Kathryn McKechnie  
Cookie Merens  
Rebecca Milikowsky  
Albert Miller  
Mr. and Mrs. Steve Miller  
Elliot Mirman  
Music of the Baroque  
Margaret Muster



Walter Nathan  
Dee Nemeth  
North Shore Exchange  
Tilda Orr  
Bryan Osburn  
Paul Rehder Salon LLC  
The Peggy Notebaert  
Nature Museum  
Performers Music  
Marilyn Perno  
Jennifer Philbrook  
Potbelly Sandwich Shop  
Charlotte Prince  
Public House  
Quartinos Restorante  
Radisson Blu Aqua Hotel  
Chicago  
Kim Rasmussen  
Suzanne Reade  
Martha D. Reaney  
Reggie's Music Joint  
Debbie Reisner  
Beth Riney  
Norman Rivkin  
RL Restaurant  
Rockit Ranch Productions,  
Inc.  
Dawn M. Rose  
Steven B. and Ruth Ross  
Ms. Elisabeth Roth  
Donna Ryder  
Saks Fifth Avenue Chicago  
Salon 541  
Salon Buzz  
Sassoon Salon  
Lois Schmidt  
Scooter's Frozen Custard  
Nathan Shapiro  
Silk Utopia  
Sharon Skaar  
Daryl Sneed  
Sprinkles Cupcakes

Laverne Stebbins  
Stuart-Rodgers  
Photography  
Norma Sutton  
Stan Swig  
Rhya Swiryn  
Dr. Janet P. Szlyk  
Sally Tannenbaum  
Tasting deVine  
Tasting deVine Cellars  
Tavern at the Park  
The Denim Lounge  
Thodos Dance Chicago  
Sasha Thornber  
Trilogy Natural Skincare  
Eugenia Ulasewicz  
Veruca Salt  
WGN-TV  
Whole Foods Market  
Halsted  
Williams-Sonoma Lincoln  
Park  
Zanies Comedy Night Club  
Mark Ziegenhorn  
Karen Zupko  
Dean Zelinsky  
Ruth's Chris Steak House  
Lettuce Entertain You  
Heinen's Grocery  
Trader Joe's  
Forever Yogurt  
Big Delicious Planet  
Blind Industries and  
Services of Maryland  
Chipotle  
Costco  
Dunkin Donuts  
Ferrara Bakery  
Jewel  
Mariano's  
Potebelly  
Scafuri Bakery

# LIGHTHOUSE KEEPERS

The Lighthouse Keepers are a group of special friends of The Lighthouse who annually give \$1,000 or more. We regret we cannot list every donor but thank you so much to each and every one! (Cumulative gifts over \$1,000 July 1, 2013 – June 30, 2014)

## **\$250,000 OR MORE**

Mr. and Mrs. Charles L. Barancik  
Elizabeth Z. Drew Trust  
Mr. Fred Mickina Estate  
Anita Swanstrom Trust

## **\$100,000 - \$249,999**

Erskine Marital and Family Trust  
Mr. and Mrs. Richard A. Forsythe  
Conrad N. Hilton Foundation  
Mr. and Mrs. Raymond McCaskey  
Veronica Wilczynski Trust  
Wohlers Family Foundation

## **\$50,000 - \$99,999**

Anonymous  
The Chicago Community Trust  
Chicago Lighthouse Associate Board  
Cless Family Foundation  
The Harris Family Foundation  
The Healthcare Foundation of  
Highland Park  
Mrs. Beatrice C. Mayer

## **\$25,000 - \$49,999**

Anonymous  
The Barker Welfare Foundation  
Mr. and Mrs. Robert Clifford  
Ms. Anida Johnson "Cookie" Cohen  
Lillian Del Chicca Trust  
Julius N. Frankel Foundation  
Lloyd A. Fry Foundation  
The Robert J. Gunterberg Charitable  
Foundation  
Koch Charitable Remainder Annuity  
Trust  
PERT Foundation  
Polk Bros. Foundation

## **\$10,000 - \$24,999**

Anonymous  
John W. Anderson Foundation  
The Berner Charitable and  
Scholarship Foundation  
BMO Harris Bank  
Helen Brach Foundation  
Fred J. Brunner Foundation  
Mr. Robert W. Clarke  
ComEd

CSX Corporation  
Mr. and Mrs. Fred C. Flosi  
Max Goldenberg Foundation  
GSG Consultants, Inc.  
Mr. and Mrs. Bruce R. Hague  
The Irving Harris Foundation  
Carrye & Abraham S. Hart Fund  
Mrs. Lisa Hilton  
Mr. and Mrs. David Huber  
Dr. Manus C. Kraff  
Lader Family Foundation  
Mrs. Charlotte K. Lindon  
Ms. Jill E. Marshall  
Mazza Foundation  
Mr. and Mrs. Walter Nathan  
Northern Trust Charitable Trust  
Edmond and Alice Opler Foundation  
The Private Bank and Trust Company  
The REAM Foundation  
Mr. and Mrs. Gary Rich  
Mr. and Mrs. Richard H. Schnadig  
Dr. Scholl Foundation  
The Edward S. Sprague Foundation  
Mr. and Mrs. Roger Stone  
Dollie Swarts Memorial Trust  
Drs. Janet P. Szlyk and Jeffrey M.  
Jackson  
Topfer Family Foundation  
Chef Charlie\* and Rochelle Trotter  
Union Pacific Foundation

## **\$5,000 - \$9,999**

Anonymous  
Adreani Foundation  
AHEPA National Housing Corporation  
Barnes & Thornburg LLP  
Mrs. Charlotte R. Berlin  
Better World Books  
Mr. and Mrs. David Brint  
Mr. and Mrs. Donald J. Burrell  
Mr. and Mrs. Franklin A. Chanen  
Mrs. Rosanne Cohen  
Lions John and Pat Coleman  
Mr. and Mrs. William L. Conaghan  
Dr. and Mrs. Thomas A. Deutsch  
Coach Mike and Diana Ditka  
Mrs. Mary B. Galvin  
Mr. John S. Gates, Jr.  
Frederick E. & Ida H. Hummel

Foundation  
Illinois Bar Foundation  
Mr. and Mrs. Arthur Kane  
Mrs. Patricia M. Livingston  
Locke Lord LLP  
Rabbi Steven Lowenstein and Mrs.  
Julie Stark-Lowenstein  
Mrs. Donna Lyon  
Arthur R. Metz Fund, Globe  
Foundation  
Minow Family Foundation  
Mr. and Mrs. Richard Nathan  
Jean Owen Trust  
PricewaterhouseCoopers LLP  
The Pritzker Traubert Family  
Foundation  
Mr. and Mrs. Robert N. Rourke  
RR Donnelley  
Mrs. Ilene Shaw  
Sidley Austin LLP  
The Siragusa Foundation  
Mr. Milan Sluka  
Bertha Tomaska Trust  
United Way of Metropolitan Chicago  
Mr. Ray Van Dyke  
Vanguard Charitable Endowment  
Program  
The A. Montgomery Ward  
Foundation  
Mrs. Sarita Warshawsky  
Mr. and Mrs. Lee E. Whitcomb  
Ms. Catherine J. Wytzka  
George H. Zendt Charitable Trust

## **\$2,500 - \$4,999**

Anonymous  
Mr. and Mrs. Steven H. Adelman  
Mr. and Mrs. Robert Appelbaum  
Mr. and Mrs. Peter M. Ascoli  
The Bill Bass Foundation  
The Boeing Company  
Bridgeview Bank Group  
Mr. Thomas M. Carroll  
Central Steel & Wire Company  
Mr. Stuart Chanen and Ms. Julie  
Fenton  
Delta Controls Chicago, INC.  
Mr. Matthew Ditka  
Amelia Dregosh Trust



Mr. and Ms. Scott Fithian  
 Mr. Bruce W. Foudree and  
 Ms. Suzanne Reade  
 Glenview Lions Club  
 Ms. Megan Goldish  
 Goldman Sachs & Company  
 Grant Thornton LLP  
 Huber Financial Group  
 Illinois Tool Works  
 Mr. and Mrs. Jerry Januszewski  
 Dr. and Mrs. Joel A. Kaplan  
 Mr. and Mrs. James M. Kesteloot  
 Mr. and Mrs. Terrence J. Longo  
 Mr. and Mrs. William McNally  
 Pedersen & Houpt  
 Retina Consultants, LTD  
 Retina Services, Ltd.  
 Benjamin J. Rosenthal Foundation  
 Mr. and Mrs. David W. Rutstein  
 Mrs. Audrey Spiegel  
 Abbie E. Tyrrell Fund  
 Mr. and Mrs. S. Sye Unell  
 United Way of Central Indiana, Inc.  
 Ms. Virginia S. Willcox  
 Woodward MPC, Inc.  
 Mr. and Mrs. Eugene Zemsky

#### **\$1,000 - \$2,499**

Am Shalom Synagogue  
 Mr. and Mrs. Sanford Bank  
 Mr. and Mrs. Donald A. Belgrad  
 Beverly Ridge Lions Club  
 Bloomfield Mechanical  
 The Blowitz-Ridgeway Foundation  
 Mr. and Mrs. John R. Bodine  
 Mr. and Mrs. James E. Bramsen  
 Mrs. Lorena Campbell  
 Central Lions Club of Chicago  
 Chicago Stereo Camera Club  
 Clarendon Hills Lions Club  
 Mr. Allan Coleman  
 Ms. Cheryl Coleman  
 Mrs. Jeanie Coleman  
 Community Foundation of the Fox  
 River Valley  
 Dr. and Mrs. Michael Conrad  
 Abe and Ida Cooper Foundation  
 Cooper Management Co., LLC  
 Millicent H. Cooper Trust  
 Country Financial  
 Darien Lions Club  
 Davis Imperial Cleaners, Inc.  
 Alex Demond Fund  
 DLA Piper U.S. LLP  
 Mr. and Mrs. Lawrence J. Dunn  
 Eclipse Manufacturing Company

George M. Eisenberg Foundation for  
 Charities  
 Ethan and Seth Future of Vision  
 Foundation  
 Mr. and Mrs. Suhail Fakhouri  
 Mr. and Mrs. Jon W. Fisher  
 Mr. and Mrs. James T. Frankenbach  
 Mrs. Kris A. Glicker  
 Mrs. Susan G. Gohl  
 Goldman Sachs & Co. Matching Gift  
 Program  
 Mr. Richard Greenberger  
 Grossinger Auto Group  
 Ms. and Mr. Caroline Grossinger  
 Mrs. Sally R. S. Higginson  
 Ms. Mary P. Hines  
 Dr. and Mrs. Arnold Hirsch  
 Mr. Larry Hochberg  
 Illinois Clean Energy Community  
 Foundation  
 ITW Hi-Cone  
 Mr. and Mrs. Wilfred Jacobson  
 Jennings Chevrolet  
 Mr. and Mrs. James R. Jennings  
 Mr. and Mrs. Val R. Jensen  
 Mr. and Mrs. John Johnson  
 Mr. Gregryk Jones  
 Dr. and Mrs. Douglas Kaplan  
 Mr. and Mrs. Robert N. Kaplan  
 Mr. Jean-Claude B. Kappler  
 Mrs. Lore Kirchheimer  
 Mr. and Mrs. James Kobs  
 Gerald A. & Karen A. Kolschowsky  
 Foundation  
 Kraff Eye Institute, LTD  
 Mrs. Julie D. Kraff  
 Mr. Henry L. Latkin  
 Mr. Steven Laughman  
 Ms. Cheri Lawrence  
 Lefkovitz Foundation  
 Ms. Kendra Lerner  
 Ms. Myla Lerner  
 Mr. and Mrs. Bernard Leviton  
 Libertyville Sunrise Rotary  
 LSS Foundation  
 Mr. and Mrs. John R. Lyman  
 Mr. and Mrs. James L. Mann  
 Mr. and Mrs. Robert Manning  
 Mr. Paul Markiewicz  
 Dr. and Mrs. Edward Mazur  
 Dr. Alan R. McCall, M.D.  
 Mr. and Mrs. Bill McClung  
 McLean Foundation  
 Medline Industries Inc.  
 Mr. and Mrs. Frederick Melean  
 Mr. and Mrs. Robert K. Miller  
 Mr. Richard Musson

Naperville Noon Lions Club  
 Mr. William Neiman  
 New City Moving  
 Mr. Eric Nixon  
 Non Profit Risk Services, Inc.  
 Mr. and Mrs. William North  
 Northwest Indiana Public  
 Broadcasting, Inc.  
 Packaging Corporation of America  
 Palos Lions Club  
 Mr. and Mrs. Ronald N. Paul  
 Mr. William G. Paullin  
 Mr. and Mrs. Michael E. Phenner  
 Primex, Inc.  
 Ms. Susan Richman  
 Mr. Paul W. Rink  
 Riverside Township Lions Club  
 Roberts Family Foundation  
 Rocco Fiore & Sons Inc.  
 Mr. David Rosenstein  
 Mr. and Mrs. Steven B. Ross  
 Ms. Patricia Roth  
 Mr. and Mrs. Arturo Saenz  
 John and Shirley Schlossman  
 Mr. and Mrs. Alan Schwartz  
 Mrs. Bernice Sexauer  
 Ms. Kathy Share  
 Dr. and Mrs. Steve Sholl  
 Mrs. Nancy W. Silberman  
 Mr. William Silverstein  
 Ms. Alisa M. Singer  
 Ms. Carol H. Slott  
 Mr. and Mrs. Anthony E. Speiser  
 Ms. Dorothy M. Thomas  
 Mr. Pete and Mrs. Pam Tully  
 Mr. Joseph Vallez  
 Mr. and Mrs. Donald J. Vilim  
 Mrs. Mamie Walton  
 Mr. and Mrs. Marshall Weinberg  
 Samuel Weinstein Family Foundation  
 Mr. and Mrs. David Weisberg  
 Ruth and Richard Wellinghoff Family  
 Fund  
 Mr. David Witz  
 Mr. and Mrs. Robert K. Zentner

*\*deceased*

*We apologize in advance for any errors,  
 misspellings or omissions. Please contact  
 Jennifer Miller at (312) 997-3643 or  
 jennifer.miller@chicagolighthouse.org  
 to notify us.*



# BOARD OF DIRECTORS FY2014

## CHAIRMAN

Richard H. Schnadig  
Special Asst. Corporate  
Counsel  
City of Chicago

## VICE CHAIRMAN

Gary Rich

## PRESIDENT

Janet P. Szlyk, PhD  
President/CEO  
The Chicago Lighthouse

## TREASURER

Robert Clarke  
Partner  
Deloitte Financial  
Advisory Services, LLP

## ASSISTANT TREASURER

Arturo Saenz  
CEO, GSG Consultants,  
Inc.

## SECRETARY

John Coleman  
Owner (Retired)  
Enterprise HVAC

## ASSISTANT SECRETARY

Kati Hochstadt  
Sr. Director, Revenue  
Cycle  
NorthShore University  
HealthSystem Medical  
Group

## IMMEDIATE PAST CHAIR

Bruce Hague  
President, National  
Commercial Banking  
The Private Bank

## EXECUTIVE COMMITTEE MEMBERS-AT-LARGE

Michael F. Meehan  
Sales, Marketing, and  
Cost Containment  
Consultant

Julie A. Stark  
The Stark Solution

## MEMBERS

Richard R. Boykin  
Attorney at Law  
Barnes & Thornburg, LLP

David Brint  
Chief Executive Officer  
Brinshore Development

Larry Broutman  
Wildlife Photographer

Anthony O. Brown  
President  
Cascades Ventures, Inc.

Anida Johnson "Cookie"  
Cohen

William L. Conaghan  
Vice Chair and CEO  
Bridgeview Bank Group

Thomas Deutsch, M.D.  
Dean and Sr. Vice  
President,  
Rush Medical College

Mike Ditka  
Owner  
Ditka Corporation

Sandra C. Forsythe

Bruce Foudree  
Principal  
Skarzynski Black, LLC

David J. Huber, CFP  
President  
Huber Financial

Val Jensen  
Vice President of  
Marketing and  
Environmental  
Programming  
ComEd

Edward C. Jepson  
Partner  
Vedder Price

Joel A. Kaplan, M.D.  
Retina Services Ltd.  
(Retired)

James M. Kesteloot, CRC  
President Emeritus  
The Chicago Lighthouse  
for People Who Are  
Blind or Visually  
Impaired

Manus C. Kraff, M.D.  
Kraff Eye Institute

Marvin Lader  
Datavantage  
Corporation (retired)

Tom Livingston  
Resident Vice President  
CSX Transportation

Theodore Mazola  
Co-President  
New West Realty, Inc.

Judy McCaskey  
Educator and Civic  
Volunteer

Jaclyn McNally  
Partner  
Perkins Coie LLP

Peter Miller  
Founder and President  
Security Systems, Inc.

Walter Nathan  
Founder  
RTC Industries

Robert Pascal  
President  
ForceRL

John A. Raske  
Managing Director,  
Diversified Industries  
Commercial Mid Market  
BMO Harris Bank

Vonita Reescer  
Owner VDR &  
Associates, LLC

Paul W. Rink  
Attorney

David Rosenstein  
Owner  
Connexion

Robert Rourke  
Vice President  
LEK Consulting

Paul L. Scher  
Senior Partner  
Jordan Scher &  
Associates

Jack Stonebraker  
President  
CREED Consulting, LLC

Donald J. Vilim  
Senior Counsel &  
Assistant Secretary  
AAR CORP

## BOARD OF DIRECTORS MEMBERS EMERITI

Philip L. Cochran  
Richard R. Fabbri  
Carl Konrath  
James McVane, Jr., Esq.  
Donald H. Palmer  
Mrs. William A. Patterson  
Raymond C. Wieboldt, Jr.  
Theodore N. Zekman, M.D.

# LEADERSHIP

## ASSOCIATE BOARD

### *President*

Sally Higginson

### *Executive Committee*

Haley Baer

Gail Boorstein

Nancy Burstyn

Carol Carl

Jeanie Coleman

Allie Davidson

Kim Flashner

Jo Ann Galston

Gayle Harris

Amy Hausman

Jaclyn Joseph

Julie Kraff

Cheryl Kraff-Cooper, M.D.

Pamela Leslie

Carly Linton

Nina Mann

Penny Meyers

Jennifer Millstein

Sheila Moss

Lynn Muslin

Emily Nagler

Joani Oslan

Fran Pine

Jennifer Reiner

Ilene Shaw

Julie Smith

Eydie Sternberg

Alison Stolberg

Kim Strauss

## PROFESSIONAL ADVISORY COUNCIL

### *Co-Chairs*

Louise Sclafani, O.D.

Lawrence J. Ulanski, M.D.

### *Members*

Kenneth Alexander, Ph.D.

Monique Anawis, M.D.

Alan J. Axelrod, M.D.

Jordan Beller, O.D.

Marcia E. Blake, O.D.

Albert A. Bucar, O.D.

Sandra Bury, O.D.

R. Scott Carlson, O.D.

Ronald Carr, O.D.

Kimberlee Curnyn, M.D.

Randy Epstein, M.D.

Gerald A. Fishman, M.D.

Bruce Gaynes, O.D.

Jasper Gulotta, O.D.

Barry Herst, M.D.

Lee Jampol, M.D.

Ansel Johnson, O.D.

Robert Johnson, O.D.

Kenneth Kirschner, O.D.

Jeffrey Koziol, O.D.

Cheryl Kraff-Cooper, M.D.

Frank P. LaFranco, M.D.

Pamela Lowe, O.D.

Connie MacQueen, O.D.

Tanvi Mago, O.D.

Timothy T. McMahon, O.D.

Marilyn B. Mets, M.D.

Marilyn T. Miller, M.D.

Floyd Mizener, O.D.

Charlotte Nielsen, O.D.

David H. Orth, M.D.

Kirk Packo, M.D.

Kenneth Robinson, M.D.

Peter A. Russo, O.D.

Loretta Rutkowski, O.D.

James R. Sanderson, O.D.

Joel Sugar, M.D.

Derrald Taylor, O.D.

Daniel J. Tepper, M.D.

Lawrence R. Vogel, O.D.

Charles Vygantas, M.D.

Janice Walser, O.D.

Byron Wright, M.D.

Walter J. Zinn, O.D.

## LIONS STRICKFADEN ADVISORY COMMITTEE

### *Chairman*

PDG Lion John Coleman

### *Members*

Past Int'l Director Lion &

PDG Lion Dan O'Reilly

PDG Lion Wes Salsbury

PDG Lion Austin D'Souza

PDG Lion Steve Anton

PDG Lion John Chisum

PDG Lion Ralph Koller

PDG Lion Ray Jachim

PDG Lion Dennis McMillan

PDG Lion Georg Toft

PDG Lion Allen Warshaw

PDG Lion Bob Zavorka

Lion Richard Carlson

Lion Derrick Phillips

## JUNIOR BOARD

### *Co-Chairs*

Megan Goldish

Holly Brown

## CHICAGO LIGHTHOUSE MANAGEMENT TEAM

Janet P. Szlyk, Ph.D.

*President & CEO*

Pamela Tully, M.B.A.

*Chief Operating Officer*

Mary Lynne

Januszewski, CPA

*Executive Vice President/*

*Chief Financial Officer*

Warren K. Chapman, Ph.D.

*Chief Advancement*

*Officer*

*Financial Development*

Jeanette Bonzani

*Senior Vice President, PHR*

*Human Resources*

Sheila Perkins

*Senior Vice President,*

*Employment Services*

Thomas Perski, M.A.

*Senior Vice President,*

*Rehabilitation Services*

Greg Polman

*Senior Vice President,*

*Public Policy*

Mary S. Zabelski

*Senior Vice President,*

*Educational Services*

Dominic Calabrese

*Vice President, Public*

*Relations*

Jean-Claude Kappler

*Vice President,*

*Lighthouse Industries*

Jennifer Miller, J.D., LL.M.

*Vice President, Financial*

*Development/*

*Individual and Planned*

*Giving*

Joseph Adelman

*Director, Building &*

*Grounds; Shipping &*

*Receiving*

Zachary Anderson

*Director, Contract*

*Management Services*

*(Chicago, IL)*

Lisa Birmingham, M.A.M.S.

*Creative Director*

*Financial Development*

Elliott Boston

*Director, Contract*

*Management Services*

*(Rock Island, IL)*

Kara Crumbliss, O.D.

*Director, Low Vision*

*Services*

Laurine Donohue

*Director, Seniors Program*

Gerald Fishman, M.D.

*Director, Pangere Center*

*for Inherited Retinal*

*Diseases*

Marla Garstka, M.A.

*Director, Children's*

*Programs, Chicago*

*Lighthouse North*

Bill Jurek

*Director, CRIS Radio*

Robert Mantsh

*Director of Adult Living*

*Skills*

Joann Rushing

*Director of Deaf/Blind*

*Services*

Kathy Stoeberl

*Director of Call Center*

*Enterprises*

Ricardo Vilchez

*Director, Information*

*Technology*

Melissa Wittenberg

*Director, Chicago*

*Lighthouse North*

# 2013 - 2014 Financial Summary and Comparison

## STATEMENTS OF FINANCIAL POSITION

as of June 30

ASSETS			
		2013	2014
Cash	\$	282,311	\$ 404,424
Receivables, Net		4,362,629	6,326,129
Inventories		936,709	989,919
Investments		13,927,302	15,973,737
Beneficial Interest in Perpetual Trusts		530,241	582,422
Prepaid Expenses		336,349	195,778
Land, Building and Equipment, Net		10,449,597	9,829,492
<b>Total Assets</b>	<b>\$</b>	<b>30,825,138</b>	<b>\$ 34,301,901</b>
LIABILITIES AND NET ASSETS			
Liabilities	\$	5,352,226	\$ 7,105,369
Net Assets			
Unrestricted		8,210,913	7,830,018
Unrestricted, Board Designated		11,695,840	13,454,389
Temporarily Restricted		3,596,479	3,888,566
Permanently Restricted		1,969,680	2,023,559
Subtotal Net Assets	\$	25,472,912	\$ 27,196,532
<b>Total Liabilities and Net Assets</b>	<b>\$</b>	<b>30,825,138</b>	<b>\$ 34,301,901</b>





# STATEMENTS OF ACTIVITIES

Period ended June 30

REVENUES			
		2013	2014
Contributions & Bequests	\$	4,075,730	\$ 5,021,146
Lighthouse Industries Sales		4,109,886	4,114,878
Call Centers/Service Contracts		2,779,151	14,633,471
Program Revenues		6,264,201	6,821,765
Investment Income		438,026	386,595
Miscellaneous		49,604	155,572
Change in Value of Split-Interest Agreements		(5,517)	41,062
Net Realized Gain/(Loss) on Investments		185,465	718,299
Net Change in Unrealized Appreciation of Long Term Investments		896,183	884,698
<b>Total Revenues</b>	<b>\$</b>	<b>18,792,729</b>	<b>\$ 32,777,486</b>
EXPENSES			
Program Services	\$	15,965,914	\$ 26,773,171
Management & General		2,965,168	3,209,622
Fundraising		743,545	849,251
Public Relations		189,991	221,822
<b>Total Expenses</b>	<b>\$</b>	<b>19,864,618</b>	<b>\$ 31,053,866</b>
CHANGE IN NET ASSETS			
Net Assets at Beginning of Year	\$	(1,071,889)	\$ 1,723,620
Net Assets at Beginning of Year	\$	26,544,801	\$ 25,472,912
Net Assets at End of Year	\$	25,472,912	\$ 27,196,532

# UPCOMING EVENTS

Seeing What's Possible

## ANNUAL DINNER

MAY 14, 2015

Associate Board

## HOUSE & GARDEN WALK

JUNE 24, 2015







3rd Annual Celebrity

## **GOLF TOURNAMENT**

with Mike Ditka

**AUGUST 31, 2015**

## **FLAIR**

Fun. Fashion. Philanthropy.

**OCTOBER 2, 2015**

Lighthouse North

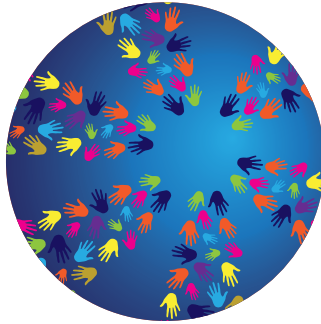
## **ART AND VISION**

Wine & Cheese Reception

**OCTOBER 11, 2015**







## MANY HANDS light the way

EDITORIAL CONCEPT Janet P. Szlyk, Ph.D.

WRITER Dominic Calabrese

EDITORIAL BOARD Warren Chapman, Ph.D.;  
Jennifer Miller, J.D., LL. M.; Sarah Brophy;  
Jeremy Ruthstein; Melissa Wittenberg

DESIGN/ILLUSTRATION Lisa Birmingham

PHOTOGRAPHY Matt Kosterman;  
Dominic Calabrese; John Riley;  
Kevin Sherman; Robert Sit

---

For Large Print or Braille versions  
of the Annual Report, call  
(312) 666-1331 ext. 3358, or e-mail:  
[publications@chicagolighthouse.org](mailto:publications@chicagolighthouse.org)



1850 West Roosevelt Road, Chicago, IL 60608  
Tel (312) 666-1331 TTY (312) 666-8874

222 Waukegan Road, Glenview, IL 60025  
Tel (847) 510-6200

[www.chicagolighthouse.org](http://www.chicagolighthouse.org)